



Conveyancing and Law of Property Act, 1884

STRATUM PLAN

REGISTERED NUMBER

60005

No. 351

Sheet 1 of 4 Sheets

City or Town HOBART

Locality NEW TOWN

Reference to Title 2961-92 C.T.

Site comprises the whole of Lot 1. & Lot 2. in the Plan No. 18/29 TS in the Diagrams No. 18/24 in the

Lands Titles Office

Registry of Deeds

Lands Office

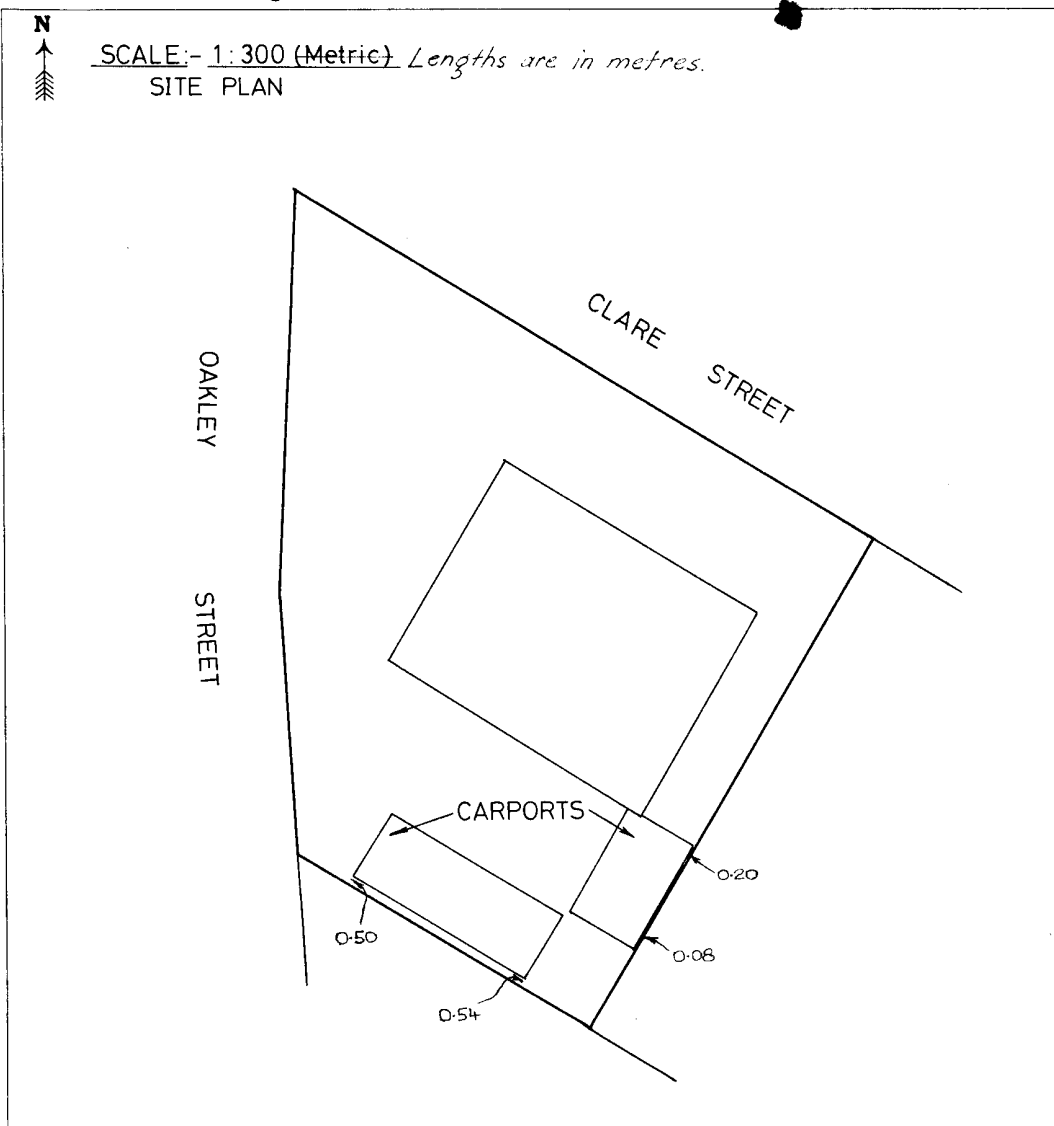
The name of the building is CLARE HALL - HOBART

Diagram No. 103467



SCALE:- 1:300 (Metric) Lengths are in metres.  
SITE PLAN

External surface boundaries of the site and the location of the building in relation thereto to be delineated in this space



REGISTERED this Twenty ninth day of July 1975, No. 351

Acting Recorder of Titles  
Registrar of Deeds

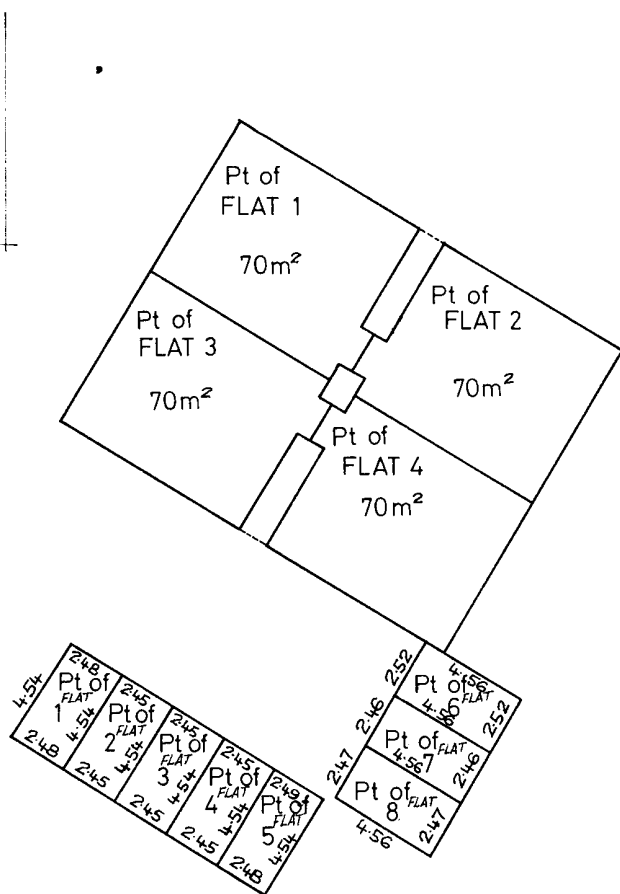
This plan is lodged for registration by MURDOCH, CLARKE, COSGROVE & DRAKE

Sheet 2 of 4 Sheets

*[Signature]*  
Town Clerk/Council Clerk

GROUND FLOOR

Scale :- 1:200(metric)



HORIZONTAL BOUNDARIES OF FLATS ARE DEFINED BY HEAVY BLACK LINES  
BOUNDARIES OF FLATS ARE THE CENTRE OF FLOORS WALLS AND CEILINGS  
UNLESS OTHERWISE DEFINED  
PORTIONS OF FLATS WITH HORIZONTAL BOUNDARIES DEFINED BY  
DIMENSIONS ARE OPEN CARPORTS AND THE VERTICAL BOUNDARIES  
EXTEND FROM GROUND LEVEL TO THE UNDERSIDE OF THE ROOF  
AREAS SHOWN ARE TOTAL AREA OF THE FLATS

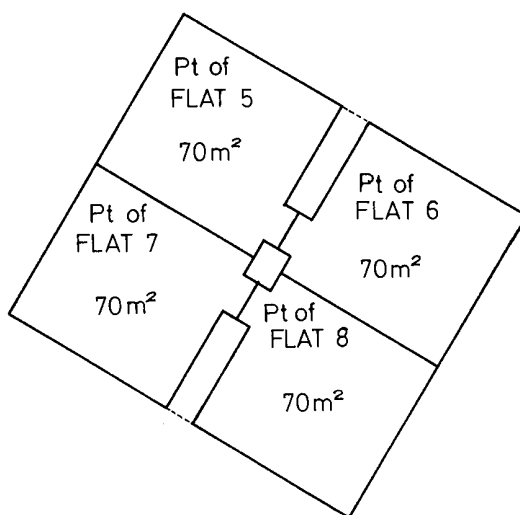
If further sheets are required to illustrate the flats, the sheets should be pinned here. Further sheets must be of paper supplied for the purpose by the Recorder of Titles and bearing his seal, and be numbered consecutively, commencing from sheet 4.

Sheet 3 of 4 Sheets

*[Signature]*  
Town Clerk/Council Clerk

FIRST FLOOR

Scale :- 1 : 200 (metric)



HORIZONTAL BOUNDARIES OF FLATS ARE DEFINED BY HEAVY BLACK LINES  
BOUNDARIES OF FLATS ARE THE CENTRE OF FLOORS WALLS AND CEILINGS  
UNLESS OTHERWISE DEFINED  
PORTIONS OF FLATS WITH HORIZONTAL BOUNDARIES DEFINED BY  
DIMENSIONS ARE OPEN GARAGES AND THE VERTICAL BOUNDARIES  
EXTEND FROM GROUND LEVEL TO THE UNDERSIDE OF THE ROOF  
AREAS SHOWN ARE TOTAL AREA OF THE FLATS

Sheet 4 of 4 Sheets

60005

The address for service of notices on the company is:—

The Body Corporate, Strata Plan No. 60005  
C/- Tas Strata & Property Group Pty Ltd  
Level 2/29 Salamanca Place  
Battery Point TAS 7004

## UNIT ENTITLEMENTS

[illegible]

### SURVEYOR'S CERTIFICATE

I, John Brian Medbury  
of Cambridge  
a surveyor registered under the *Land Surveyor's Act 1909*, hereby certify that the building erected on the site described and delineated on sheet 1 of this plan is within the external boundaries of the title stated on sheet 1.

Dated this 27<sup>th</sup> day of May 1975.

.....  
**Registered Surveyor**

### COUNCIL CLERK'S CERTIFICATE

I certify that the subdivision shown in this plan  
has been approved by the HOBART

CITY Council

Dated this 20 day of JUNE 1975

~~Town Clerk/Council Clerk~~

**FOR OFFICE USE ONLY**