

Property report for 24 HOOKEY COURT, ROKEBY



Property Identification Number

5213515

Locality

ROKEBY

Planning Zones

General Residential

Total Area

660 sqm

Certificate of Title Reference (Volume/Folio)

55491/176

Municipality

Clarence

Planning Codes Overlay

Airport obstacle limitation area

Planning Scheme

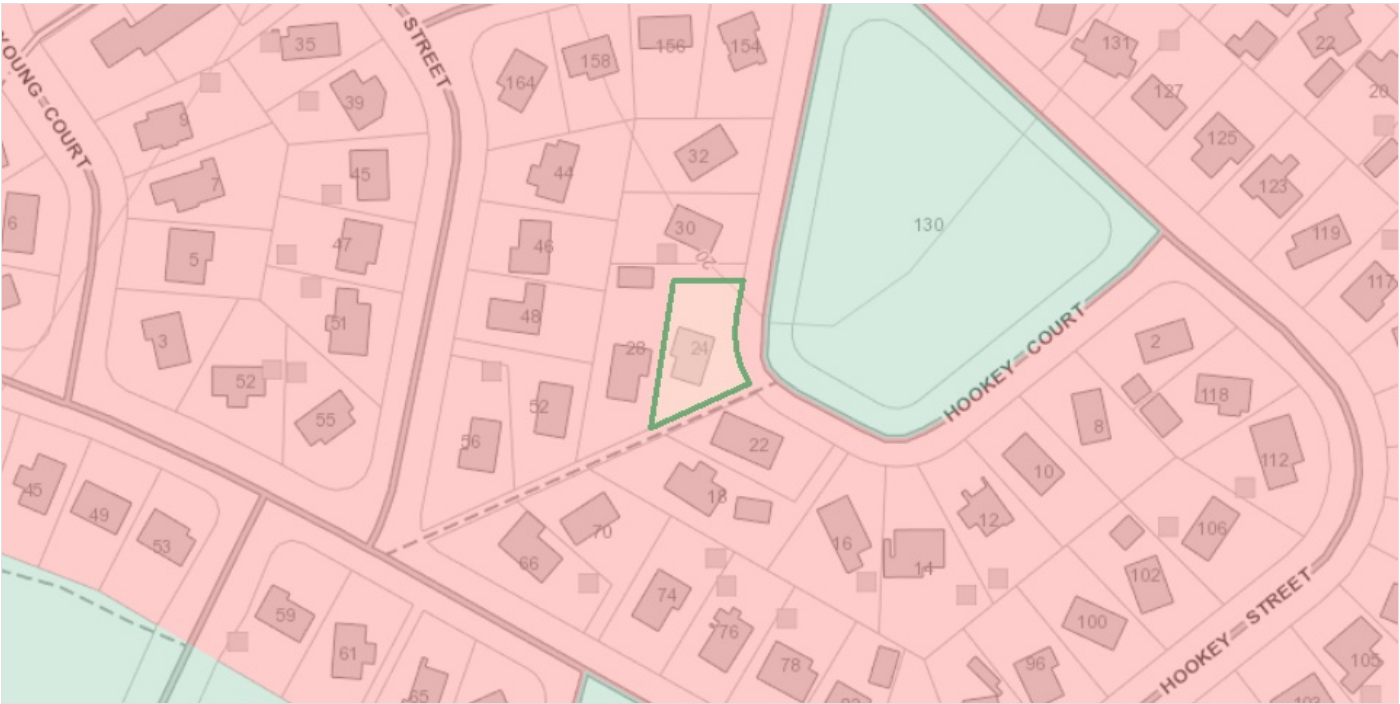
Tasmanian Planning Scheme

This property is in the **General Residential** planning zone under the Tasmanian Planning Scheme.

The Tasmanian Planning Scheme consists of state wide provisions to ensure consistency across Tasmania, and local provisions which spatially apply those through zoning maps along with specific provisions for unique places in each municipality to address local issues.

Location Information

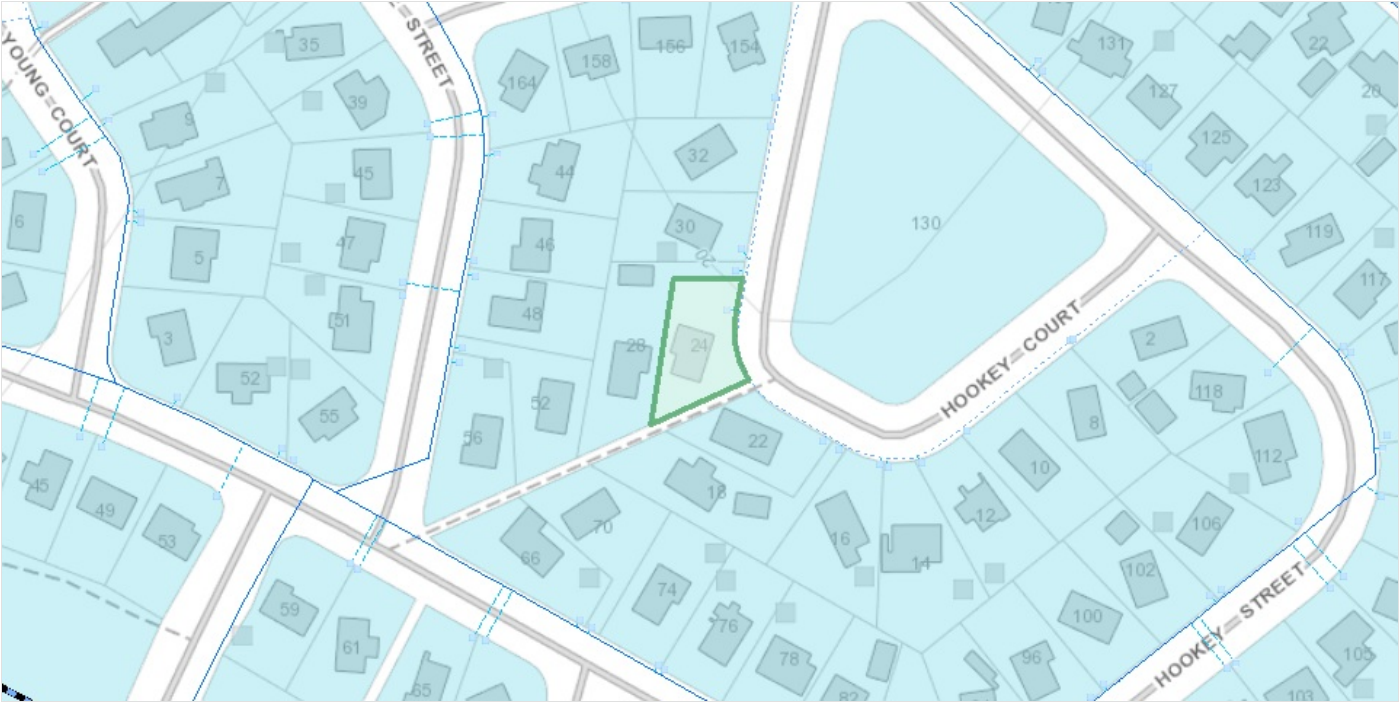
Planning Zone



Tasmanian Planning Zone

Zone Number	8
Zone	General Residential

TasWater - Water Service



TasWater - Customer Connection Point

The Water Customer Connection Point represents the location where the customer's water infrastructure connects to, or can connect to TasWater's reticulated water supply network. The property has a Customer Connection Point, which typically is the location of the stop tap and water meter at the end of a lateral pipe from the main. This is represented on the map by a square, often containing "WC".

Location ID	L53163
Water Connection Size	20mm

TasWater - Water Lateral Line

A lateral line indicates the property service pipe that begins at the water main and ends at the customer connection point. This is displayed on the map as a thin light blue line. Work cannot be undertaken within 2 metres of any infrastructure without seeking approval from TasWater.

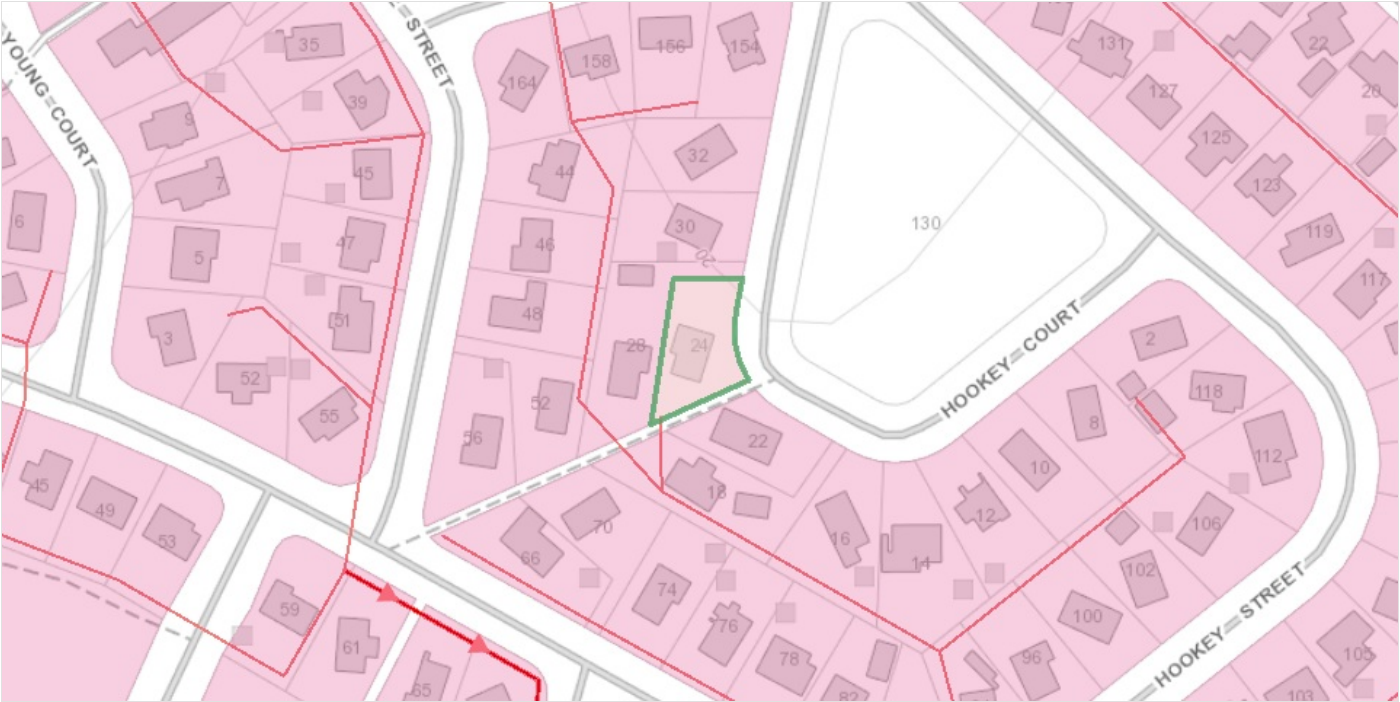
MATERIAL	PE80b
DIAMETER	25

TasWater - Water Serviced Land

Serviced Land is the land which TasWater will permit to be connected to its water and sewerage infrastructure. The blue shading on the map indicates water serviced properties. The property is connected to, or is able to connect (with a standard service connection) to the TasWater water supply network. Development assessments will be required to be undertaken prior to undertaking any work on TasWater Infrastructure. See <https://www.taswater.com.au/Customers/Serviced-Land> for further information.

Service Type	Full Service
--------------	--------------

TasWater - Sewer Service



TasWater - Sewer Serviced Land

Serviced Land is the land which TasWater will permit to be connected to its water and sewerage infrastructure. The red shading on the map indicates sewerage serviced properties. The property is connected to, or is able to connect (with a standard service connection) to the TasWater sewerage reticulation network. Development assessments will be required to be undertaken prior to undertaking any work on TasWater Infrastructure. See <https://www.taswater.com.au/Customers/Serviced-Land> for further information.

Service Type	Full Service
--------------	--------------

TasWater - Sewer Main

Sewer mains transport sewage throughout the network (sewerage system). Work cannot be undertaken within 2 metres of any infrastructure without seeking approval from TasWater. The sewer main is displayed on the map as the thick red lines (some with arrows and varying in thickness).

TasWater infrastructure



TasWater - Water Lateral Line

A lateral line indicates the property service pipe that begins at the water main and ends at the customer connection point. This is displayed on the map as a thin light blue line. Work cannot be undertaken within 2 metres of any infrastructure without seeking approval from TasWater.

MATERIAL	PE80b
DIAMETER	25

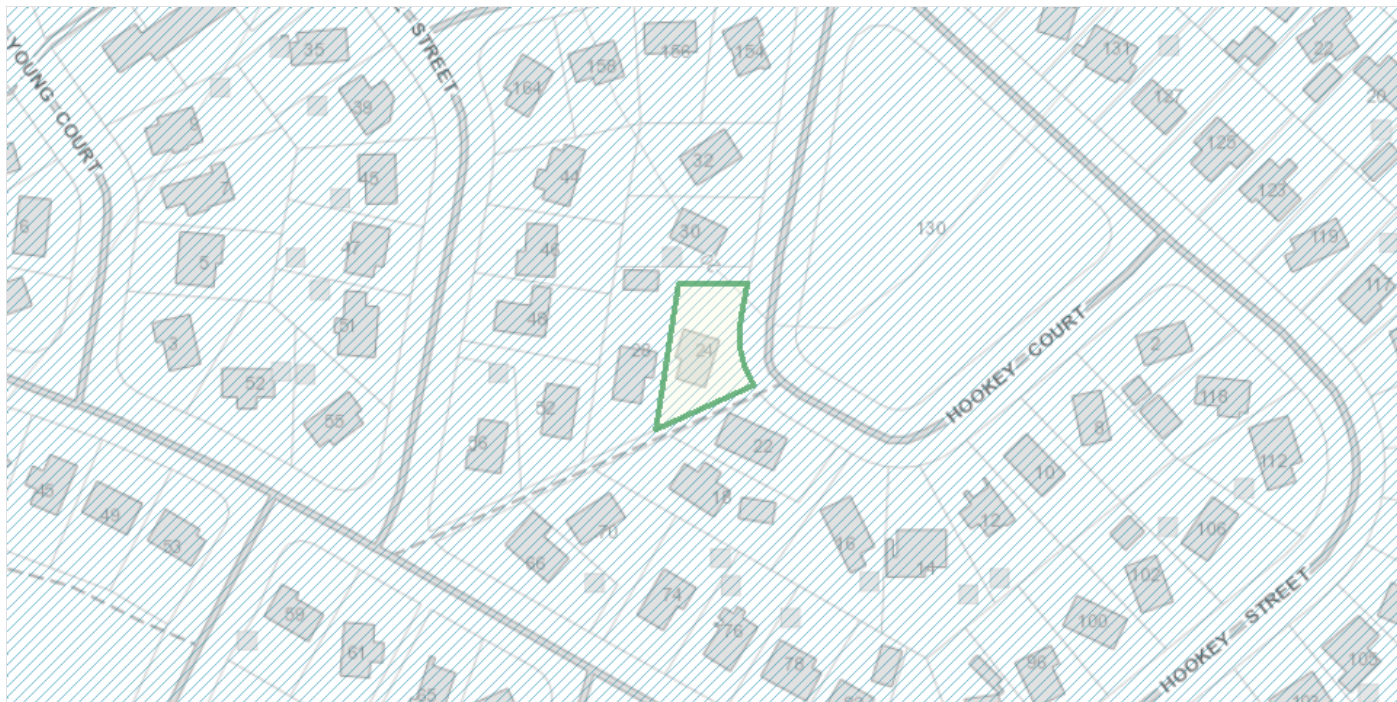
TasWater - Sewer Lateral Line

The lateral line indicates the property service pipe that begins at the sewer main and ends at the customer connection point. This is displayed on the map as a thin red line. Work cannot be undertaken within 2 metres of any infrastructure without seeking approval from TasWater.

TasWater - Sewer Main

Sewer mains transport sewage throughout the network (sewerage system). Work cannot be undertaken within 2 metres of any infrastructure without seeking approval from TasWater. The sewer main is displayed on the map as the thick red lines (some with arrows and varying in thickness).

Safeguarding of airports code



Airport obstacle limitation area

The airport obstacle limitation area overlay is based on the Obstacle Limitation Surfaces (OLS) and Procedures for Air Navigation Services - Aircraft Operations (PANS-OPS) contained in the airport master plan or those otherwise adopted by the relevant airport owner or operator for the relevant airport in accordance with any accepted guidelines. It identifies the specified height limit on the land within the overlay by reference to AHD.

Description	Hobart Airport OLS - AHD data
Overlay Name	Airport obstacle limitation area
LPS Reference	CLA-C16.0

Council Details

The local council where your property is located can provide advice on a proposed project.

Consult

Clarence City Council

Mailing address

38 Bligh Street
Rosny Park Tasmania 7018

Work: (03) 6217 9500

Email: clarence@ccc.tas.gov.au

Disclaimer

This enquiry tool is a guide only and is not a substitute for professional advice.

This enquiry tool only provides information for common developments undertaken individually, for example, building a deck.

The Tasmanian Planning Commission, a court, council or other relevant authority may have an interpretation of the law that is different from the information provided as part of this enquiry tool.

You should always confirm that you are permitted to commence a development by contacting a relevant authority who may be:

- the local council; or
- an independent Licensed Professional