

Owner: MAP DEVELOPMENTS P/L

Title Reference: CT 4226-03 C.T.4293-3

Grantee: (20-2-0)  
PART OF LOT 29709 AGTD TO  
D. N. MC KENDRICK

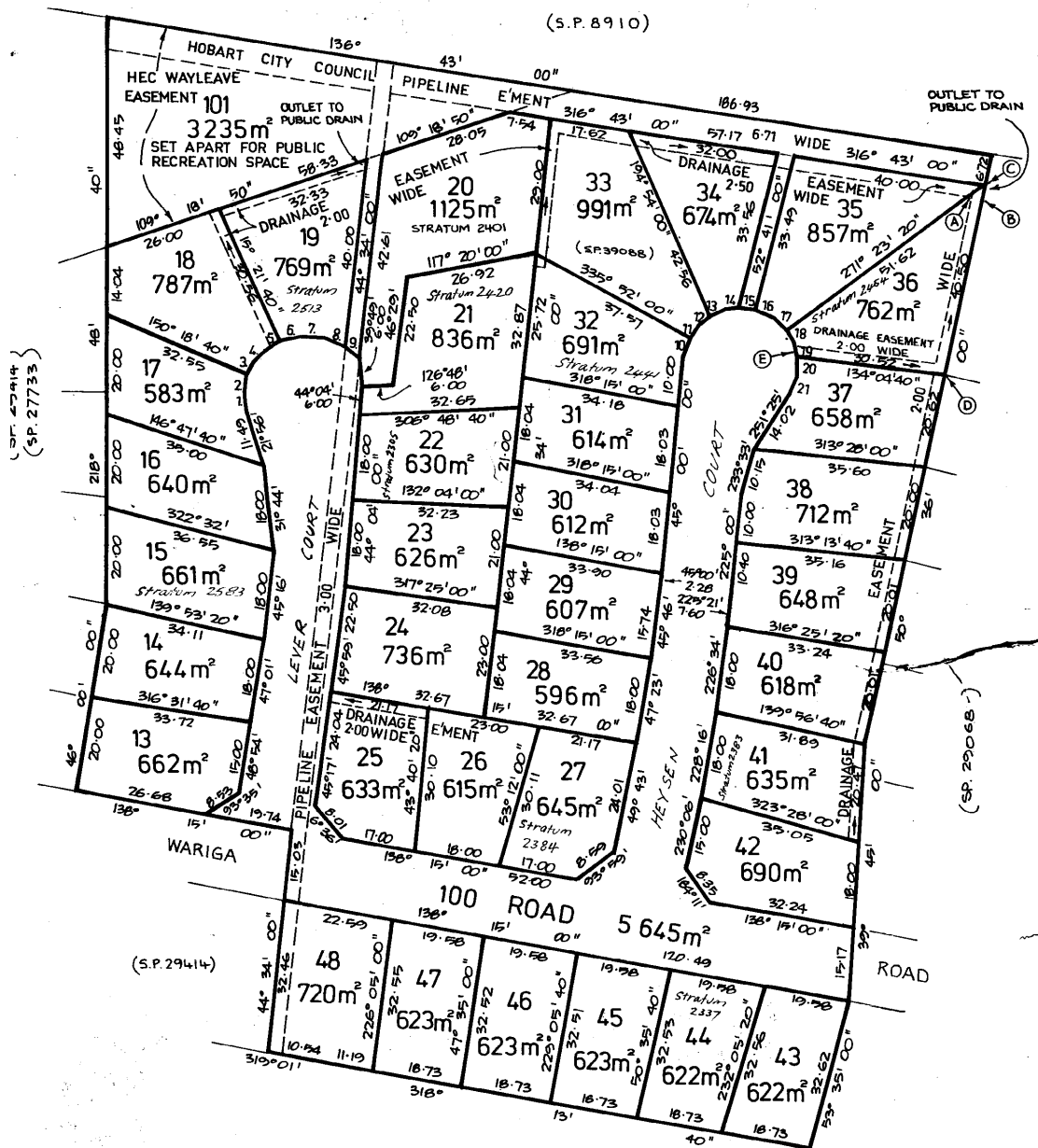
PLAN OF SURVEY  
by Surveyor: P. J. Mc ANTON  
of land situated in the  
CITY OF GLENORCHY

Registered Number: **S.P30912**

Approved: 13 MAR 1987  
Effective from:

SCALE 1: 750 MEASUREMENTS IN METRES

UR SN5 16/1/87



1.	31° 32'	4.00	11.	75° 22'	3.13
2.	50° 43'	4.00	12.	86° 22'	3.13
3.	67° 49'	3.14	13.	103° 51'	3.57
4.	82° 50'	3.14	14.	120° 01'	3.57
5.	97° 51'	3.14	15.	135° 27'	3.02
6.	116° 10'	4.90	16.	152° 21'	4.03
7.	137° 47'	4.90	17.	171° 43'	4.03
8.	141° 47'	5.61	18.	186° 54'	3.00
9.	156° 16'	3.23	19.	202° 06'	3.80
10.	177° 26'	4.35	20.	220° 26'	4.30
			21.	241° 05'	4.30