

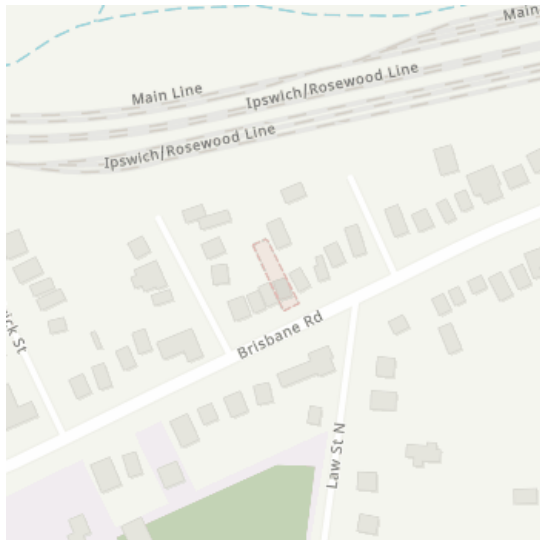
Caller Details

Contact: Image Property
Company: Image property
Address: 57 Kirby Road
Aspley QLD 4034

Caller Id: 3003158
Phone: (07) 3263 1811
Email: sales.support@imageproperty.com.au

Dig Site and Enquiry Details

WARNING: The map below only displays the location of the proposed dig site and does not display any asset owners' pipe or cables. The area highlighted has been used only to identify the participating asset owners, who will send information to you directly.



User Reference: 40A Brisbane
Working on Behalf of: Private
Enquiry Date: 02/08/2023
Start Date: 09/08/2023
End Date: 09/08/2023

Address:
40a Brisbane Rd
Redbank QLD 4301

Job Purpose:
Design

Onsite Activities:
Planning & Design

Location of Workplace:
Both

Location in Road:
Road, Nature Strip, Footpath

- Check that the location of the dig site is correct. If not you must submit a new enquiry.
- Should the scope of works change, or plan validity dates expire, you must submit a new enquiry.
- Do NOT dig without plans. Safe excavation is your responsibility. If you do not understand the plans or how to proceed safely, please contact the relevant asset owners.

Notes/Description of Works:
Not supplied

Your Responsibilities and Duty of Care

- The lodgement of an enquiry does not authorise the project to commence. You must obtain all necessary information from any and all likely impacted asset owners prior to excavation.
- If plans are not received within 2 working days, contact the asset owners directly & quote their Sequence No.
- ALWAYS perform an onsite inspection for the presence of assets. Should you require an onsite location, contact the asset owners directly. Please remember, plans do not detail the exact location of assets.
- Pothole to establish the exact location of all underground assets using a hand shovel, before using heavy machinery.
- Ensure you adhere to any State legislative requirements regarding Duty of Care and safe digging requirements.
- If you damage an underground asset you MUST advise the asset owner immediately.
- By using this service, you agree to Privacy Policy and the terms and disclaimers set out at www.byda.com.au
- For more information on safe excavation practices, visit www.byda.com.au

Asset Owner Details

The assets owners listed below have been requested to contact you with information about their asset locations within 2 working days. Additional time should be allowed for information issued by post. It is **your responsibility** to identify the presence of any underground assets in and around your proposed dig site. Please be aware, that not all asset owners are registered with the Before You Dig service, so it is **your responsibility** to identify and contact any asset owners not listed here directly.

** Asset owners highlighted by asterisks ** require that you visit their offices to collect plans.

Asset owners highlighted with a hash # require that you call them to discuss your enquiry or to obtain plans.

Seq. No.	Authority Name	Phone	Status
227853418	Energex QLD	13 12 53	NOTIFIED
227853421	Ipswich City Council	(07) 3810 6666	NOTIFIED
227853419	NBN Co Qld	1800 687 626	NOTIFIED
227853417	Nextgen NCC - QLD	1800 262 663	NOTIFIED
227853416	Optus and or Uecomm Qld	1800 505 777	NOTIFIED
227853422	Queensland Urban Utilities	13 23 64	NOTIFIED
227853420	Telstra QLD FA	1800 653 935	NOTIFIED

END OF UTILITIES LIST

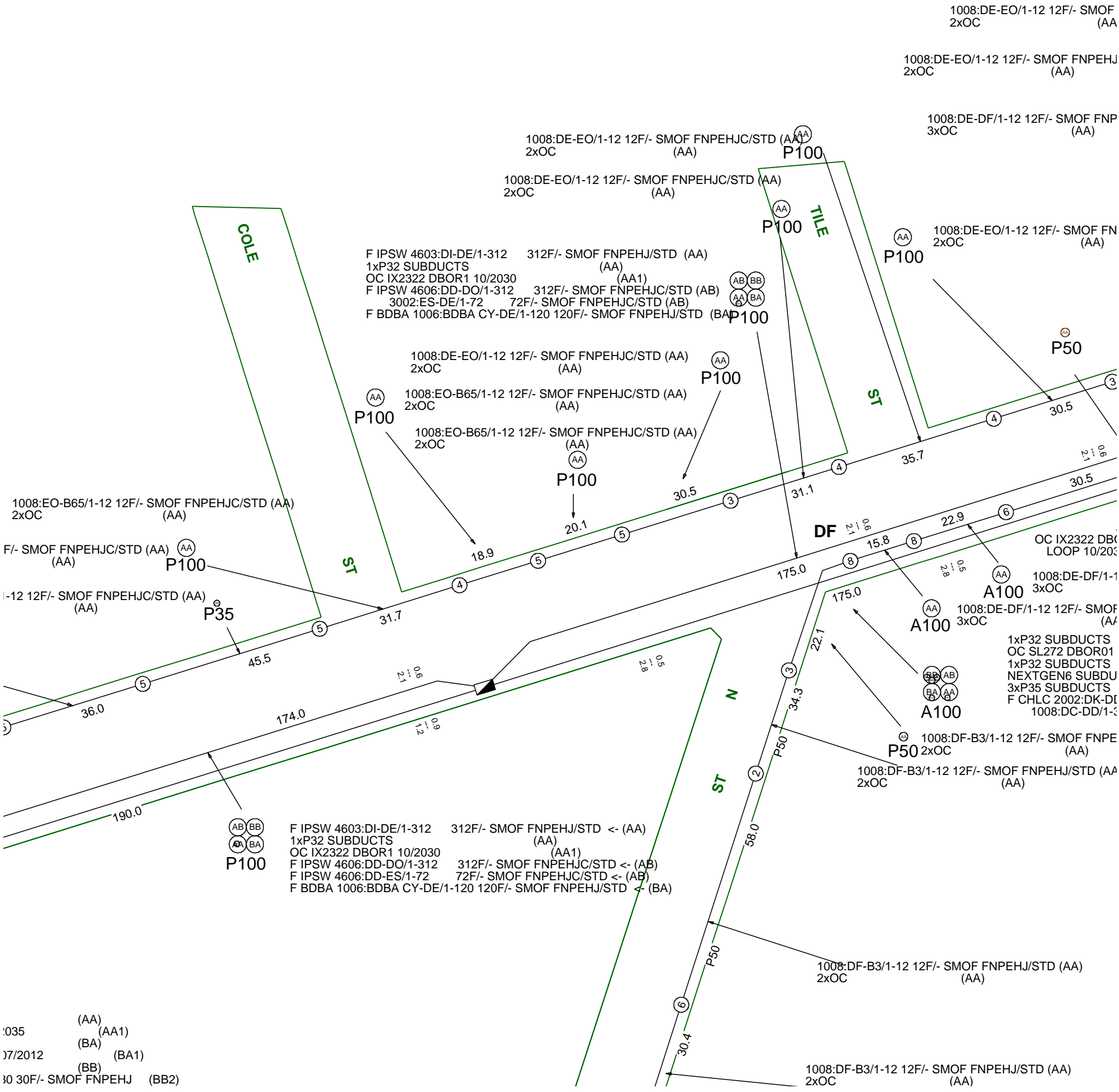



Generated On 02/08/2023 13:07:06

**CAUTION: Critical Network Route in plot area.
DO NOT PROCEED with any excavation prior to
seeking advice from Telstra Plan Services on :
1800 653 935**

Page 1 of 2

Mains Cable Plan

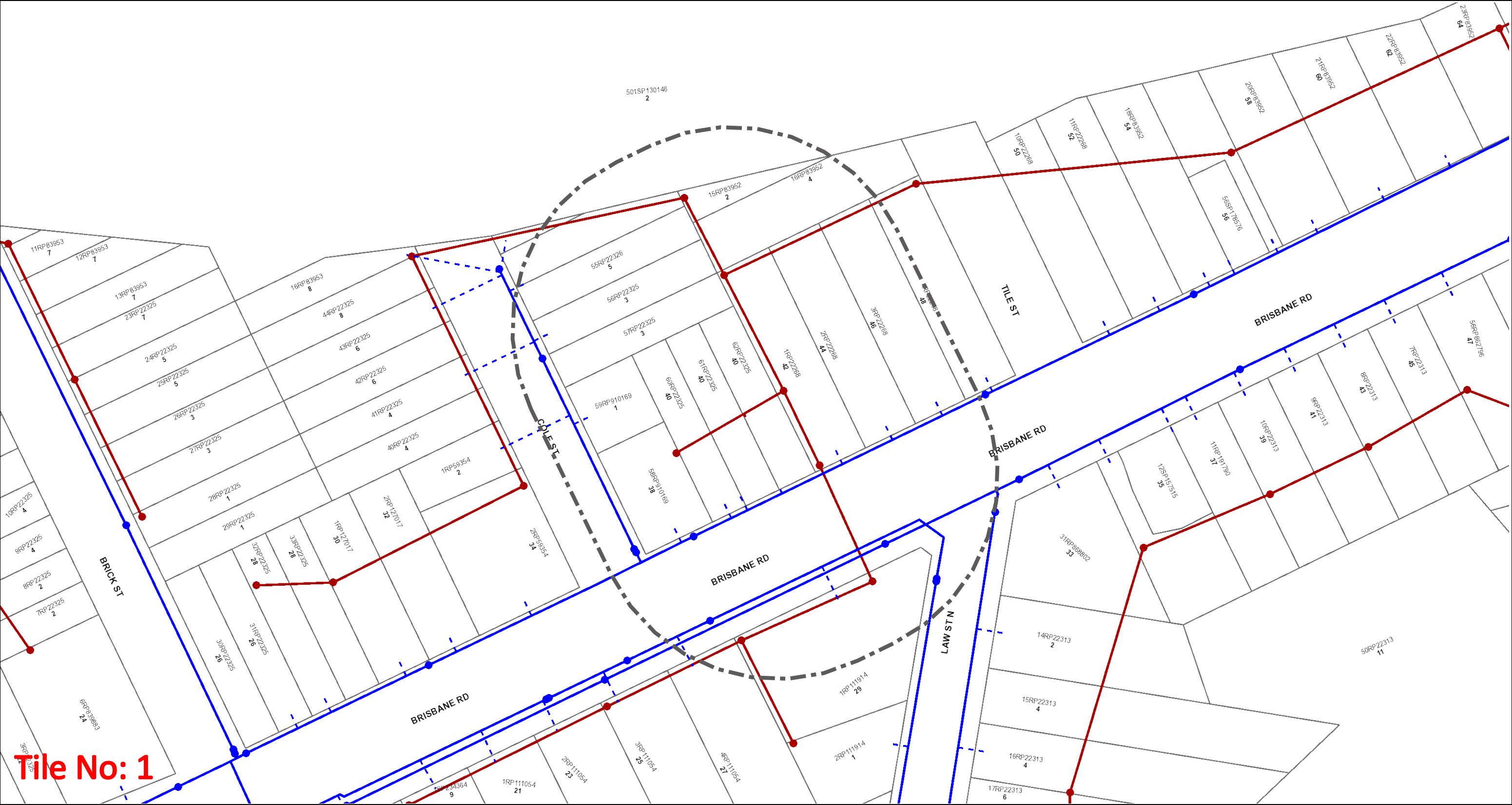


	<p>Report Damage: https://service.telstra.com.au/customer/general/forms/report-damage-to-telstra-equipment Ph - 13 22 03 Email - Telstra.Plans@team.telstra.com Planned Services - ph 1800 653 935 (AEST bus hrs only) General Enquiries</p>	<p>Sequence Number: 227853420</p>
<p>TELSTRA LIMITED A.C.N. 086 174 781</p> <p>Generated On 02/08/2023 13:07:08</p>		<p>CAUTION: Critical Network Route in plot area. DO NOT PROCEED with any excavation prior to seeking advice from Telstra Plan Services on : 1800 653 935</p>


WARNING
Telstra plans and location information conform to Quality Level "D" of the Australian Standard AS 5488-Classification of Subsurface Utility Information. As such, Telstra supplied location information is indicative only. Spatial accuracy is not applicable to Quality Level D. Refer to AS 5488 for further details. The exact position of Telstra assets can only be validated by physically exposing it. Telstra does not warrant or hold out that its plans are accurate and accepts no responsibility for any inaccuracy. Further on site investigation is required to validate the exact location of Telstra plant prior to commencing construction work. A Certified Locating Organisation is an essential part of the process to validate the exact location of Telstra assets and to ensure the asset is protected during construction works.

See the Steps- Telstra Duty of Care that was provided in the email response.

Urban Utilities - Water, Recycled Water and Sewer Infrastructure



Tile No: 1



Dial Before You Dig - Urban Utilities Water, Recycled Water and Sewer Infrastructure

DBYD Reference No: 227853422

Date DBYD Ref Received: 02/08/2023

Date DBYD Job to Commence: 09/08/2023

Date DBYD Map Produced: 02/08/2023

This Map is valid for 30 days

Produced By: Urban Utilities


Sewer

- Infrastructure
- ◆ Major Infrastructure
- Network Pipelines
- ▨ Network Structures

Water

- Infrastructure
- ◆ Major Infrastructure
- Network Pipelines
- ▨ Network Structures
- - - Water Service (Indicative only)

N



Map Scale
1:1000

While reasonable measures have been taken to ensure the accuracy of the information contained in this plan response, neither Urban Utilities nor PelicanCorp shall have any liability whatsoever in relation to any loss, damage, cost or expense arising from the use of this plan response or the information contained in it or the completeness or accuracy of such information. Use of such information is subject to and constitutes acceptance of these terms.

The plans are indicative and approximate only and provided without warranties of any kind, express or implied including in relation to accuracy, completeness, correctness, currency or fitness for purpose.

Urban Utilities takes no responsibility and accepts no liability for any loss, damage, costs or liability that may be incurred by any person acting in reliance on the information provided on the plans.

This plan should be used as guide only. Any dimensions should be confirmed on site by the relevant authority.

Based on or contains data provided by the State of Queensland (Department of Natural Resources and Mines) [2020]. In consideration of the State permitting the use of this data you acknowledge and agree that the State gives no warranty in relation to the data (including accuracy, liability in negligence) for any loss, damage or costs (including consequential damage) relating to any use of the data. Data must not be used for direct marketing or be used in breach of the privacy laws. © State of Queensland Department of Natural Resources and Mines [2020]

For further information, please call Urban Utilities on 13 26 57 (8am-6pm weekdays). Faults and emergencies 13 23 64 (24/7).

www.urbanutilities.com.au

ABN 86 673 835 011



Legend

 BYDA Enquiry

Disclaimer: The Plan is provided in response to a Before You Dig request. While all reasonable care has been taken to ensure the accuracy of the information on this plan, its purpose is to provide a general indication of the location of City of Ipswich infrastructure. The information provided may contain errors or omissions and the accuracy may not suit all users. A site inspection and investigation is recommended before commencement of any project based on this data.



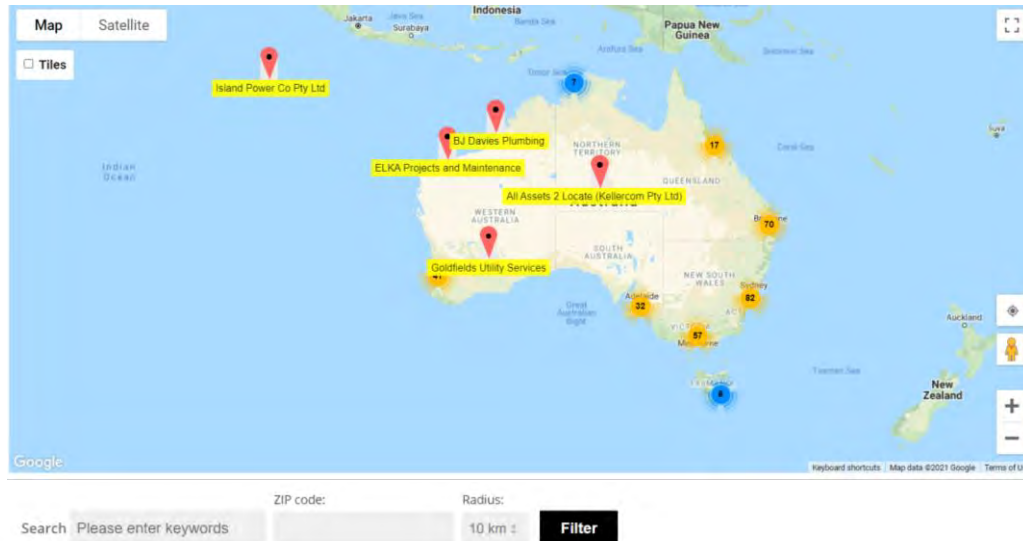
Certified Locating Organisations (CLO)


Find the closest CLO to your worksite on: <https://dbydlocator.com/certified-locating-organisation/>

Read the disclaimer and click:


Accept and Search Now

A national map and an A-Z list of Certified Locating Organisations is displayed.



Use the map to zoom to your work area and choose the closest  Locator indicated.

OR search by entering the **postcode** of your work area.

1. Enter the post/zip code
2. Choose your search radius
3. Click filter (If there is no result, you may have to increase the search radius)
4. Click on the closest  for CLO details or view the results displayed below the map



Locator skills have been tested, and the Organisation has calibrated location and safety equipment.

Telstra is aware of each Certified Locating Organisation and their employee locators.

Only a DBYD Certified Locator registered with a Certified Locating Organisation is authorised to access Telstra network for locating purposes.

Each Certified Locator working for a CLO is issued with a photo ID Card, authorising them to access Telstra pits and manholes for the purpose of cable and plant locations.

Please ask to see your Locators' CLO ID Card.

Before You Dig Australia

Think before you dig

This document has been sent to you because you requested plans of the Telstra network through Before You Dig Australia (BYDA).

If you are working or excavating near telecommunications cables, or there is a chance that cables are located near your site, you are responsible to avoid causing damage to the Telstra network.

Please read this document carefully. Taking your time now and following the steps below can help you avoid damaging our network, interrupting services, and potentially incurring civil and criminal penalties.

Our network is complex and working near it requires expert knowledge. Do not attempt these activities if you are not qualified to do so.



1. Plan

Plan your work with the latest plans of our network.

Plans provided through the BYDA process are indicative only*.

This means the actual location of our asset may differ substantially from that shown on the plans.

Refer to steps 2 and 3 to determine actual location prior to proceeding with construction.



2. Prepare

Engage a DBYD Certified Locating Organisation (CLO) via dbydlocator.com to identify, validate and protect Telstra assets before you commence work.



3. Pothole

Validate underground assets by potholing by hand or using non-destructive vacuum extraction methods.

Electronic detection alone (step 2) is not deemed to validate underground assets and must not be used for construction purposes.

If you cannot validate the Telstra network, you must not proceed with construction.



4. Protect

Protect our network by maintaining the following distances from our assets:

- › 1.0m Mechanical Excavators, Farm Ploughing, Tree Removal
- › 500mm Vibrating Plate or Wacker Packer Compactor
- › 600mm Heavy Vehicle Traffic (over 3 tonnes) not to be driven across Telstra ducts or plant
- › 1.0m Jackhammers/Pneumatic Breakers
- › 2.0m Boring Equipment (in-line, horizontal and vertical)



5. Proceed

You can proceed with your work only once you have completed all the appropriate preparation, potholing and protection.

Report any damage immediately



<https://www.telstra.com.au/forms/report-damage-to-telstra-equipment>



13 22 03

If you receive a message asking for an account or phone number say "I Don't have one"
Then say "Report Damage" then press 1 to speak to an operator.

Relocating assets

If your project requires the relocation of a Telstra asset, please contact the Telstra Network Integrity Group:



[Request Asset Relocation Or Commercial Works \(telstra.com.au\)](https://www.telstra.com.au/forms/report-damage-to-telstra-equipment)



NetworkIntegrity@team.telstra.com



1800 810 443 (AEST business hours only)

Never try to move or alter our network infrastructure without authorisation. By law, only authorised people can work on our assets or enter a facility owned or operated by us. Any interference, including unauthorised entry or tampering, may result in legal action.

Further information

Plan enquiries



1800 653 935 (AEST business hours only)



Telstra.Plans@team.telstra.com

Information on how to find cables and request asset relocations:

<https://www.telstra.com.au/consumer-advice/digging-construction>

Asset Plan Readers

PDF [Adobe Acrobat Reader DC Install for all versions](#)

DWF [Download Design Review](#) | [DWF Viewer](#) | [Autodesk](#)

Disclaimer and legal details



*Telstra advises that the accuracy of the information provided by Telstra conforms to Quality Level D as defined in AS5488-2013.

It is a criminal offence under the Criminal Code Act 1995 (Cth) to tamper or interfere with telecommunications infrastructure.

Telstra will also take action to recover costs and damages from persons who damage assets or interfere with the operation of Telstra's networks.

By receiving this information including the indicative plans that are provided as part of this information package you confirm that you understand and accept the risks of working near Telstra's network and the importance of taking all of the necessary steps to confirm the presence, alignments and various depths of Telstra's network. This in addition to, and not in replacement of, any duties and obligations you have under applicable law.

When working in the vicinity of a telecommunications plant you have a "Duty of Care" that must be observed. Please read and understand all the information and disclaimers provided below.

The Telstra network is complex and requires expert knowledge to interpret information, to identify and locate components, to pothole underground assets for validation and to safely work around assets without causing damage. If you are not an expert and/or qualified in these areas, then you must not attempt these activities. Telstra will seek compensation for damages caused to its property and losses caused to Telstra and its customers. The 5 P's to prevent damage to Telstra assets are listed above. Construction activities and/or any activities that potentially may impact on Telstra's assets must not commence without first undertaking these steps. Construction activities can include anything that involves breaking ground, potentially affecting Telstra assets.

If you are designing a project, it is recommended that you also undertake these steps to validate underground assets prior to committing to your design.

This Notice has been provided as a guide only and may not provide you with all the information that is required for you to determine what assets are on or near your site of interest. You will also need to collate and understand all of the information received from other Utilities and understand that some Utilities are not a part of the BYDA program and make your own enquiries as appropriate. It is the responsibility of the entities undertaking the works to protect Telstra's network during excavation / construction works.

Telstra owns and retains the copyright in all plans and details provided in conjunction with the applicant's request. The applicant is authorised to use the plans and details only for the purpose indicated in the applicant's request. The applicant must not use the plans or details for any other purpose.

Telstra plans or other details are provided only for the use of the applicant, its servants, agents, or Certified Locating Organisation. The applicant must not give the plans or details to any parties other than these and must not generate profit from commercialising the plans or details.

Telstra, its servants or agents shall not be liable for any loss or damage caused or occasioned by the use of plans and or details so supplied to the applicant, its servants and agents, and the applicant agrees to indemnify Telstra against any claim or demand for any such loss or damage.

Please ensure Telstra plans and information provided always remains on-site throughout the inspection, location, and construction phase of any works.

Telstra plans are valid for 60 days after issue and must be replaced if required after the 60 days.

Data Extraction Fees

In some instances, a data extraction fee may be applicable for the supply of Telstra information. Typically, a data extraction fee may apply to large projects, planning and design requests or requests to be supplied in non-standard formats. For further details contact Telstra Planned Services.

Telstra does not accept any liability or responsibility for the performance of or advice given by a Certified Locating Organisation. Certification is an initiative taken by Telstra towards the establishment and maintenance of competency standards. However, performance and the advice given will always depend on the nature of the individual engagement.

Neither the Certified Locating Organisation nor any of its employees are an employee or agent for Telstra. Telstra is not liable for any damage or loss caused by the Certified Locating Organisation or its employees.

Once all work is completed, the excavation should be reinstated with the same type of excavated material unless specified by Telstra

The information contained within this pamphlet must be used in conjunction with other material supplied as part of this request for information to adequately control the risk of potential asset damage.

When using excavators and other machinery, also check the location of overhead power lines.

Workers and equipment must maintain safety exclusion zones around power lines

WARNING: Telstra plans and location information conform to Quality Level 'D' of the Australian Standard AS 5488 - Classification of Subsurface Utility Information. As such, Telstra supplied location information is indicative only. Spatial accuracy is not applicable to Quality Level D. Refer to AS 5488 for further details. Telstra does not warrant or hold out that its plans are accurate and accepts no responsibility for any inaccuracy shown on the plans. **FURTHER ON SITE INVESTIGATION IS REQUIRED TO VALIDATE THE EXACT LOCATION OF TELSTRA PLANT PRIOR TO COMMENCING CONSTRUCTION WORK.** A plant location service is an essential part of the process to validate the exact location of Telstra assets and to ensure the assets are protected during construction works. The exact position of Telstra assets can only be validated by physically exposing them. Telstra will seek compensation for damages caused to its property and losses caused to Telstra and its customers.

Privacy Note

Your information has been provided to Telstra by BYDA to enable Telstra to respond to your BYDA request. Telstra keeps your information in accordance with its privacy statement. You can obtain a copy at www.telstra.com.au/privacy or by calling us at 1800 039 059 (business hours only).



OPENING ELECTRONIC MAP ATTACHMENTS -

Telstra Cable Plans are generated automatically in either PDF or DWF file types dependant on the site address and the size of area selected. You may need to download and install free viewing software from the internet e.g.



PDF Map Files (max size A3)

Adobe Acrobat Reader (<http://get.adobe.com/reader/>),



DWF Map Files (all sizes over A3)

Autodesk Viewer (Browser) (<https://viewer.autodesk.com/>) or

Autodesk Design Review (<http://usa.autodesk.com/design-review/>) for DWF files.
(Windows)



Telstra DBYD map related enquiries

email - Telstra.Plans@team.telstra.com

1800 653 935 (AEST Business Hours only)



REPORT ANY DAMAGE TO THE TELSTRA NETWORK IMMEDIATELY

Report online - <https://www.telstra.com.au/forms/report-damage-to-telstra-equipment>

Ph: **13 22 03**

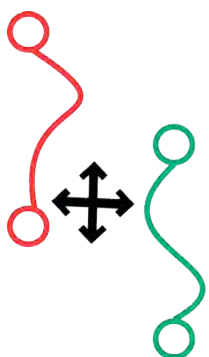
If you receive a message asking for a phone or account number say:

"I don't have one" then say "Report Damage" then press 1 to speak to an operator.



Telstra New Connections / Disconnections

13 22 00



Telstra asset relocation enquiries: 1800 810 443 (AEST business hours only).

NetworkIntegrity@team.telstra.com

<https://www.telstra.com.au/consumer-advice/digging-construction>

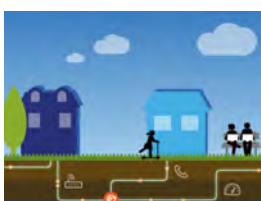
Certified Locating Organisation (CLO)

<https://dbydlocator.com/certified-locating-organisation/>



DBYDCertification

Please refer to attached Accredited Plant Locator.pdf



Telstra Smart Communities

Information for new developments (developers, builders, homeowners)

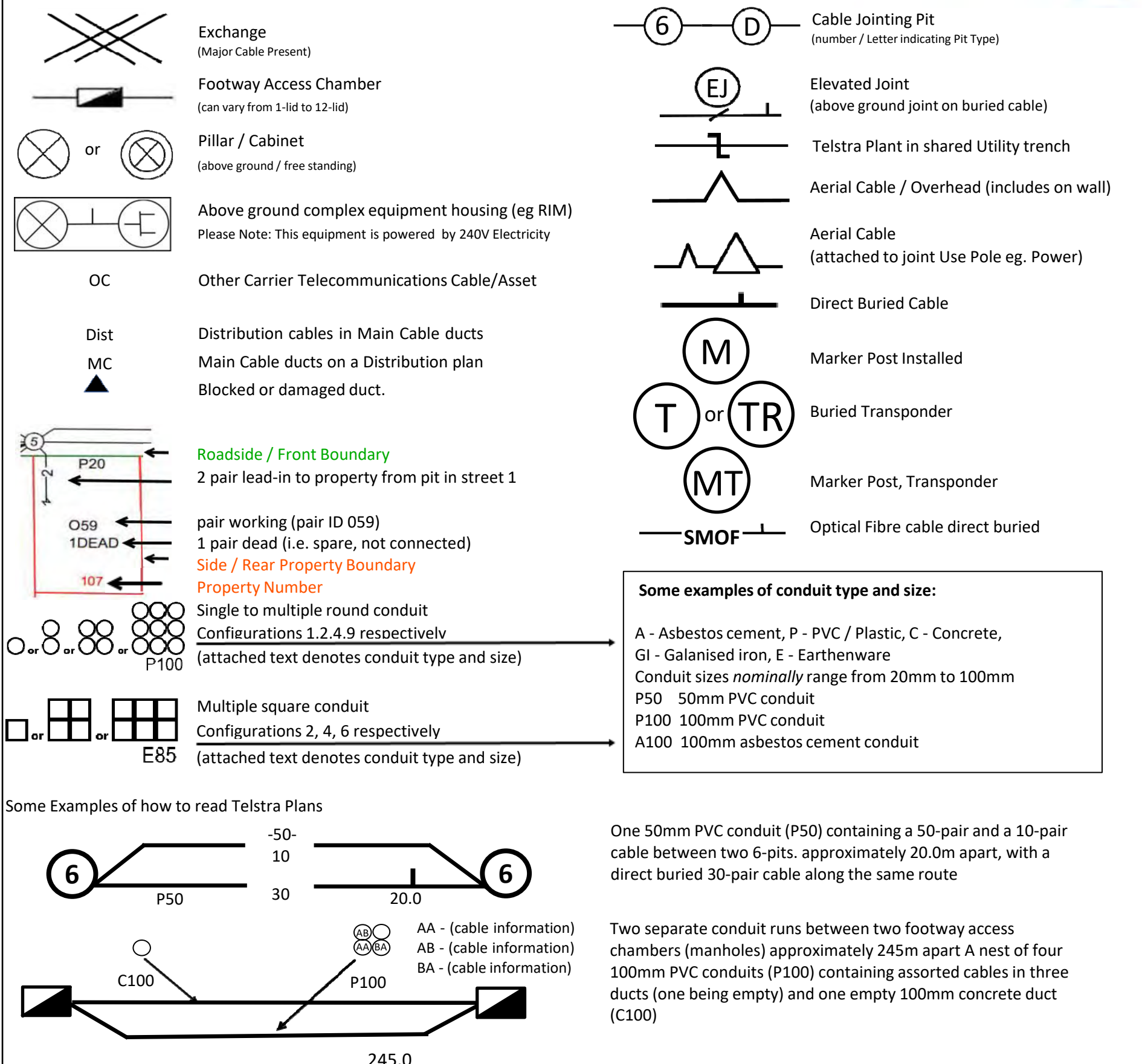
<https://www.telstra.com.au/smart-community>

LEGEND

IT'S HOW
WE CONNECT



For more info contact a [Certified Locating Organisation](#) or Telstra Plan Services 1800 653 935



WARNING: Telstra plans and location information conform to Quality Level 'D' of the Australian Standard AS 5488 - Classification of Subsurface Utility Information. As such, Telstra supplied location information is indicative only. Spatial accuracy is not applicable to Quality Level D. Refer to AS 5488 for further details. Telstra does not warrant or hold out that its plans are accurate and accepts no responsibility for any inaccuracy shown on the plans. FURTHER ON SITE INVESTIGATION IS REQUIRED TO VALIDATE THE EXACT LOCATION OF TELSTRA PLANT PRIOR TO COMMENCING CONSTRUCTION WORK. A plant location service is an essential part of the process to validate the exact location of Telstra assets and to ensure the assets are protected during construction works. The exact position of Telstra assets can only be validated by physically exposing them. Telstra will seek compensation for damages caused to its property and losses caused to Telstra and its customers.

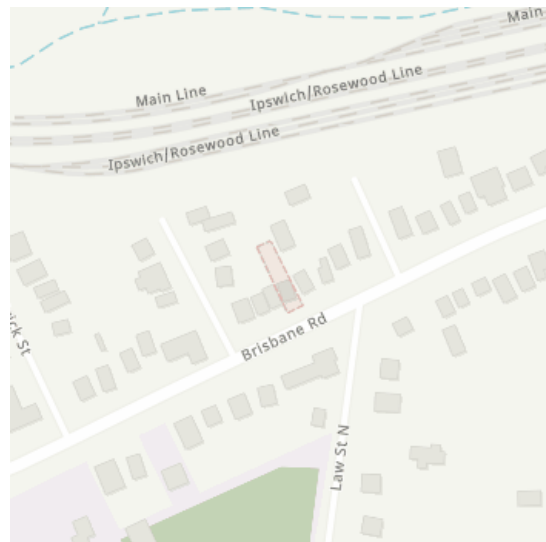
Caller Details

Contact: Image Property
Company: Image property
Address: 57 Kirby Road
Aspley QLD 4034

Caller Id: 3003158
Phone: (07) 3263 1811
Email: sales.support@imageproperty.com.au

Dig Site and Enquiry Details

WARNING: The map below only displays the location of the proposed dig site and does not display any asset owners' pipe or cables. The area highlighted has been used only to identify the participating asset owners, who will send information to you directly.



User Reference: 40A Brisbane
Working on Behalf of: Private
Enquiry Date: 02/08/2023
Start Date: 09/08/2023
End Date: 09/08/2023

Address:
40a Brisbane Rd
Redbank QLD 4301

Job Purpose:
Design

Onsite Activities:
Planning & Design

Location of Workplace:
Both

Location in Road:
Road, Nature Strip, Footpath

- Check that the location of the dig site is correct. If not you must submit a new enquiry.
- Should the scope of works change, or plan validity dates expire, you must submit a new enquiry.
- Do NOT dig without plans. Safe excavation is your responsibility. If you do not understand the plans or how to proceed safely, please contact the relevant asset owners.

Notes/Description of Works:
Not supplied

Your Responsibilities and Duty of Care

- The lodgement of an enquiry does not authorise the project to commence. You must obtain all necessary information from any and all likely impacted asset owners prior to excavation.
- If plans are not received within 2 working days, contact the asset owners directly & quote their Sequence No.
- ALWAYS perform an onsite inspection for the presence of assets. Should you require an onsite location, contact the asset owners directly. Please remember, plans do not detail the exact location of assets.
- Pothole to establish the exact location of all underground assets using a hand shovel, before using heavy machinery.
- Ensure you adhere to any State legislative requirements regarding Duty of Care and safe digging requirements.
- If you damage an underground asset you MUST advise the asset owner immediately.
- By using this service, you agree to Privacy Policy and the terms and disclaimers set out at www.byda.com.au
- For more information on safe excavation practices, visit www.byda.com.au

Asset Owner Details

The assets owners listed below have been requested to contact you with information about their asset locations within 2 working days. Additional time should be allowed for information issued by post. It is **your responsibility** to identify the presence of any underground assets in and around your proposed dig site. Please be aware, that not all asset owners are registered with the Before You Dig service, so it is **your responsibility** to identify and contact any asset owners not listed here directly.

** Asset owners highlighted by asterisks ** require that you visit their offices to collect plans.

Asset owners highlighted with a hash # require that you call them to discuss your enquiry or to obtain plans.

Seq. No.	Authority Name	Phone	Status
227853418	Energex QLD	13 12 53	NOTIFIED
227853421	Ipswich City Council	(07) 3810 6666	NOTIFIED
227853419	NBN Co Qld	1800 687 626	NOTIFIED
227853417	Nextgen NCC - QLD	1800 262 663	NOTIFIED
227853416	Optus and or Uecomm Qld	1800 505 777	NOTIFIED
227853422	Queensland Urban Utilities	13 23 64	NOTIFIED
227853420	Telstra QLD FA	1800 653 935	NOTIFIED

END OF UTILITIES LIST



Sequence Number: 227853417

Date: 02/08/2023

DISCLAIMER: THIS DRAWING SHOULD NOT BE SCALED TO LOCATE CABLES. NO WARRANTY IS GIVEN THAT THE INFORMATION IS ACCURATE OR COMPLETE. IF YOU REQUIRE INFORMATION REGARDING LOCATING THE CABLE PLEASE CALL NEXTGEN. THIS DOCUMENT HAS BEEN PREPARED SOLELY FOR DIAL BEFORE YOU DIG USE. THIS PLAN CONTAINS COMMERCIAL SENSITIVE INFORMATION AND IS TO BE TREATED ACCORDINGLY. NO SUCH INFORMATION IS TO BE PASSED ONTO OTHER PARTIES WITHOUT WRITTEN CONSENT FROM NEXTGEN PTY LTD.

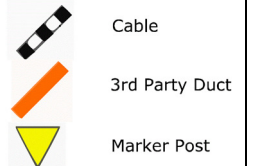


LEGEND

Digsite



Assets



Plant Location Details



02/08/2023

Image Property
Image property
57 Kirby Road
Aspley QLD 4034
Phone: +61732631811

Nextgen Networks Pty Ltd
Level 6, 333 Collins Street
Melbourne VIC 3000
T 1800 032 532
E Damage.Relocations@vocus.com.au

Dear Image Property

The following is a response to your Dial Before You Dig enquiry

Assets Affected:

Nextgen Assets

Sequence No:

227853417

Location:

40a Brisbane Rd, Redbank QLD 4301

IMPORTANT:

- Please read and understand all the information and disclaimers provided below
- Sketches and Plans provided by Nextgen Networks are circuit diagrams only and indicate the presence of telecommunications plant in the general vicinity of the geographical area shown; exact ground cover and alignments cannot be given with any certainty and cover may alter over time. Telecommunications plant seldom follow straight lines and careful on site investigation is essential to uncover and reveal its exact position
- The accuracy and/or completeness of the information in the plans can not be guaranteed often due to changes in the surrounding land subsequent to Nextgen's deployment and, accordingly the plans are intended to be indicative only

"DUTY OF CARE"

When working in the vicinity of telecommunications plant you have a legal "Duty of Care" that must be observed. The following points must be considered:

1. It is the responsibility of the owner and any consultant engaged by the owner, including an architect, consulting engineer, developer, and head contractor to design for minimal impact and protection of Nextgen Networks plant. Nextgen Networks will provide free plans and sketches showing the presence of its network to assist at this design stage.
2. It is the owner's (or constructor's) responsibility to:
 - a) Request plans of Nextgen Networks plant for a particular location at a reasonable time before construction begins
 - b) Visually locate Nextgen Networks plant by vacuum excavation (pot-holing) where construction activities may damage or interfere with Nextgen Networks plant (see "Essential Precautions and Approach Distances" section for more information)
 - c) Contact Nextgen Networks Network (see below for details) if Nextgen Networks plant is wholly or partly located near planned construction activities

DAMAGE

ANY DAMAGE TO Nextgen Networks NETWORK MUST BE REPORTED TO 1800 032 532 IMMEDIATELY

- The owner is responsible for all plant damage when works commence prior to obtaining Nextgen Networks plans, or failure to follow agreed instructions
- Nextgen Networks reserves all rights to recover compensation for loss or damage to its cable network or other property including consequential losses

CONCERNING NEXTGEN NETWORK PLANS

- Phone 1100. Dial Before You Dig for free plans of Nextgen Networks plant locations. Please give at least 2 business days notice
- Nextgen Networks plans and information provided are valid for 30 days from the date of issue
- Nextgen Networks retains copyright in all plans and details provided in conjunction with your request. These plans and or details should be disposed of by shredding or any other secure disposal method after use
- Nextgen Networks plans or other details are provided for the use of the applicant, its servants, or agents, and shall not be used for any unauthorised purpose
- Please contact the Network Help Desk (see below for details) immediately should you locate Nextgen Networks assets not indicated on these plans
- Nextgen Networks, its servants or agents shall not be liable for any loss or damage caused or occasioned by the use of plans and or details so supplied to the applicant, its servants and agents, and the applicant agrees to indemnify Nextgen Networks against any claim or demand for any such loss or damage
- Please ensure Nextgen Networks plans and information provided remains on-site at all times throughout your construction phase

ESSENTIAL PRECAUTION AND APPROACH DISTANCE

NOTE: If the following clearances cannot be maintained, please contact the Nextgen Network Help Desk (see below for details) for advice on how best to resolve this situation

1. On receipt of plans and sketches and before commencing excavation work or similar activities near Nextgen Networks plant, carefully locate this plant first to avoid damage. Undertake prior exposure (vacuum excavation) such as potholing when intending to excavate or work closer to Nextgen Networks plant than the following approach distances:
 - Where Nextgen Networks plant is in an area where road and footpaths are well defined by kerbs or other features a minimum clear distance of 600mm must be maintained from where it could be reasonably presumed that plant would reside
 - In non established or unformed reserves and terrain, this approach distance must be at least 1.5 metres
 - In country/rural areas which may have wider variations in reasonably presumed plant presence, the following minimum approach distances apply:
 - d) Parallel to major plant: 10 metres (for optic fibre cable)
 - e) Parallel to other plant: 5 metres

Note: Even pot-holing needs to be undertaken with extreme care, common sense and employing techniques least likely to damage cables. For example - vacuum excavation.

 - If construction work is parallel to Nextgen Networks plant, then careful pot-holing at least every 5m is required to establish the location of all plant, hence continuing nominal locations before work can commence
2. Maintain the following minimum clearance between construction activity and actual location of Nextgen Networks Plant.

Jackhammers/Pneumatic Breakers	<i>Not within 1.0m of actual locations</i>
Vibrating Plate or Wackers Packer Compactors	<i>Not within 0.5m of Nextgen Networks ducts 300mm compact clearance cover before compactor can be used across Nextgen Networks ducts, and 600mm clearance across Nextgen Networks cables in the solid</i>
Boring Equipment (in-line, horizontal and vertical)	<i>Not within 2.0m of actual location Constructor to check depth via vacuum excavation (pot-hole)</i>
Heavy Vehicle Traffic (over 3 tonnes)	<i>Not to be driven across Nextgen Networks ducts with less than 600mm cover. Not to be driven across Nextgen Networks fibre with less than 1.2m cover Constructor to vacuum excavate (pot-hole) and expose plant</i>
Mechanical Excavators, Boring and Tree Removal	<i>Not within 1.0m of actual location Constructor to vacuum excavate (pot-hole) and expose plant</i>

- All Nextgen Networks pits and manholes should be a minimum of 1.2m in from the back of kerb after the completion of your work
- All Nextgen Networks conduit should have the following minimum depth of cover after the completion of your work:

Footway 450mm

Roadway 450mm at drain invert and 600mm below the pavement subgrade level invert

- All Nextgen Networks fibre in the solid should have the following minimum depth of cover after the completion of your work:

Footway 600mm

Roadway 1200mm at drain invert and 1200mm below the pavement subgrade level invert

- For clearance distances relating to Nextgen Networks above ground infrastructure please contact the Network Help Desk (see below for details)

FURTHER ASSISTANCE

Over-the-phone assistance can be obtained by calling the Network Help Desk below.

Nextgen require 5 clear business days notice to conduct an on-site location. The initial on site location visit will not normally incur a charge, but at the discretion of Nextgen subsequent site visits may incur a charge to be applied at an hourly rate.

Where an on-site location is provided, the owner is responsible for all vacuum excavation work (pot-holing) to visually locate and expose Nextgen Networks plant.

If plant location plans or visual location of Nextgen Networks plant by vacuum excavation reveals that the location of Nextgen Networks plan is situated wholly or partly where the owner plans to work, then **Nextgen Networks** must be contacted through the **Network Help Desk** to discuss possible engineering solutions.

The contact number for the **Network Help Desk** is 1800 032 532.

NOTE:

If Nextgen Networks relocation or protection works are part of the agreed solution, then payment to Nextgen Networks for the cost of this work shall be the responsibility of the principal developer. The principal developer will be required to provide Nextgen Networks with the details of their proposed work showing how Nextgen Networks plant is to be accommodated and these details must be approved by the Nextgen National Operations Manager prior to the commencement of site works.

RURAL LANDOWNER - IMPORTANT INFORMATION

Where Nextgen Networks owned cable crosses agricultural land Nextgen Networks will provide a one off free-on-site electronic cable location. Please note that the exact location of cables can only be verified by visual proving by pot holing, which is not covered by this service. The Network Integrity HelpDesk Officer will provide assistance in determining whether a free-on-site location is required. Please ring the Nextgen Network Help Desk as listed above.

PRIVACY NOTE

Your information has been provided to Nextgen Networks by DBYD to enable Nextgen Networks to respond to your DBYD request. Nextgen Networks keeps your information in accordance with its privacy statement entitled 'Protecting Your Privacy' which can be obtained from Nextgen Networks either by calling 1800 032 532 or visiting our website www.nextgengroup.com.au

Warning: Nextgen Networks plans show only the presence of cables and plant. They only show their position relative to road boundaries, property fences etc, at the time of installation and Nextgen Networks does not warrant or hold out that such plans are accurate thereafter due to changes that may occur over time.

DO NOT ASSUME DEPTH OR ALIGNMENT of cables or plant as these vary significantly.

The customer has A DUTY OF CARE when excavating near Nextgen Networks cables and plant. Before using machine excavators NEXTGEN PLANT MUST FIRST BE PHYSICALLY EXPOSED BY VACUUM EXCAVATION (potholing) to identify its location.

Nextgen Networks will seek compensation for damages caused to its property and losses caused to Nextgen Networks and its customers.

EXPERIENCED PLANT LOCATORS (for your area)

On-site assistance should be sought from an Experienced Plant Locator if the telecommunications plant cannot be located within 2.5 metres of the locations indicated on the drawings provided. On-site advice should be obtained from a suitably qualified contractor highly skilled in locating Nextgen Networks plant. If there is any doubt whatsoever about the actual location of the telecommunications plant, the best method for locating the telecommunications plant or the correct interpretation of the drawings provided. In the case where Nextgen Networks plant is outside a recognised road reserve Nextgen Networks recommends that the **Network Help Desk** is contacted for assistance prior to engaging an Experienced Plant Locator.

For the assistance of customers Nextgen Networks has established strict criteria to assess the skill of contractors that may be engaged by owners requiring Nextgen Networks plant locating services to perform any of the following activities if requested to do so by the owner:

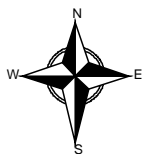
- Review Nextgen Networks plans to assess the approximate location of Nextgen Networks plant
- Advise owners of the approximate location of Nextgen Networks plant according to the plans
- Advise the owners of the best method for locating Nextgen Networks plant
- Advise owners of the hazard of unqualified persons attempting to find the exact location of Nextgen Networks plant and working in the vicinity of Nextgen Networks plant without first locating its exact position
- Perform trial hole explorations by vacuum excavation (pot-holing) to expose Nextgen Networks plant with a high degree of skill, competence and efficiency and utilising all necessary safety equipment

Nextgen Networks does not accept any liability or responsibility for the performance of or advice given by any Plant Locator engaged by you but we will, if requested, recommend suitably qualified plant locators.

GENERAL DISCLAIMER

While reasonable measures have been taken to ensure the accuracy of the information contained in this plan response, neither Nexgen or PelicanCorp shall have any liability whatsoever in relation to any loss, damage, cost or expense arising from the use of this plan response or the information contained in it or the completeness or accuracy of such information. Use of such information is subject to and constitutes acceptance of these terms.

Cable Plan



Report Damage: <https://service.telstra.com.au/customer/general/forms/report-damage-to-telstra-equipment>
Ph - 13 22 03
Email - Telstra.Plans@team.telstra.com
Planned Services - ph 1800 653 935 (AEST bus hrs only) General Enquiries

TELSTRA LIMITED A.C.N. 086 174 781

Generated On 02/08/2023 13:07:06

Sequence Number: 227853420

**CAUTION: Critical Network Route in plot area.
DO NOT PROCEED with any excavation prior to
seeking advice from Telstra Plan Services on :
1800 653 935**

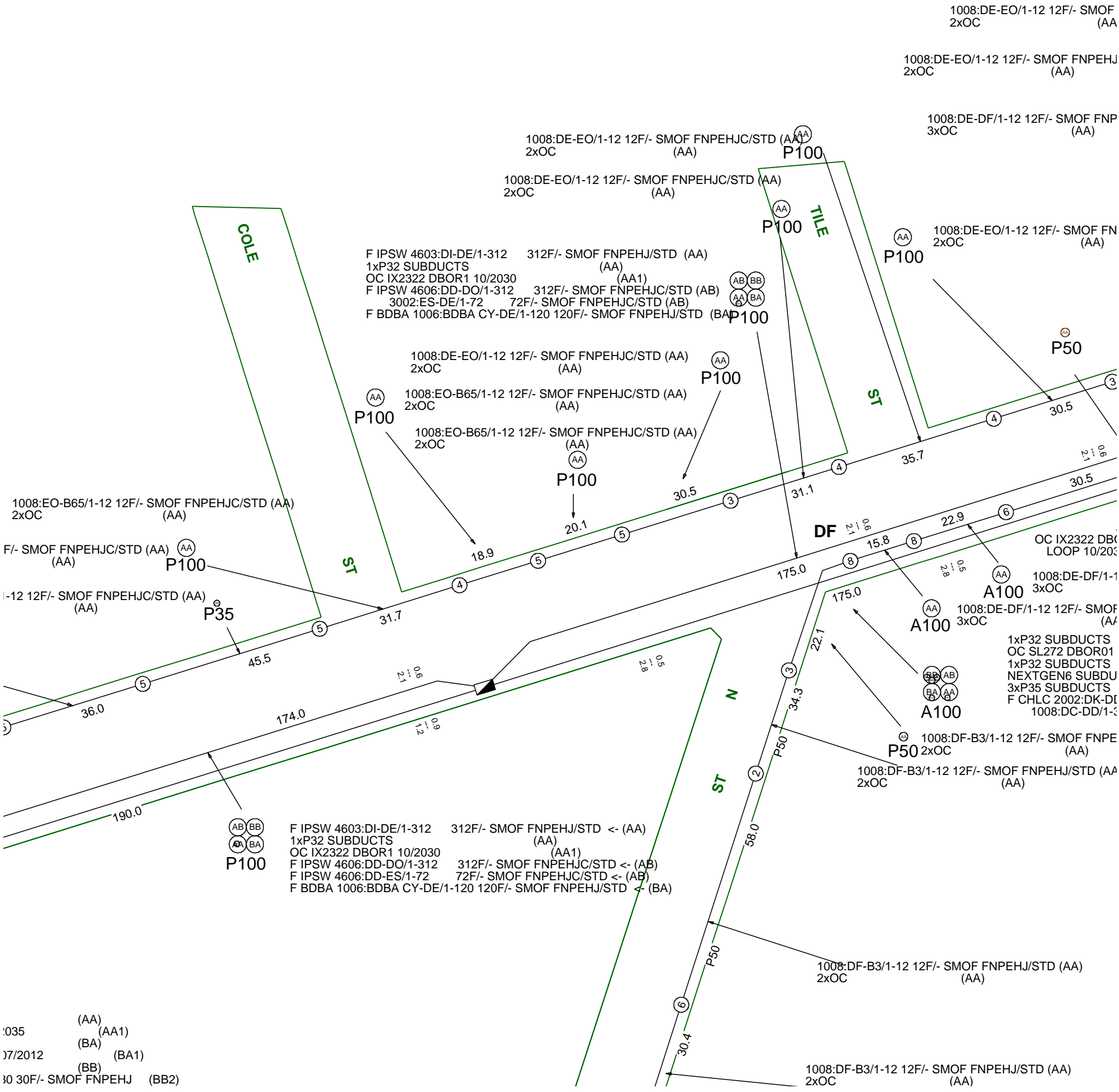
The above plan must be viewed in conjunction with the Mains Cable Plan on the following page

WARNING

Telstra plans and location information conform to Quality Level "D" of the Australian Standard AS 5488-Classification of Subsurface Utility Information. As such, Telstra supplied location information is indicative only. Spatial accuracy is not applicable to Quality Level D. Refer to AS 5488 for further details. The exact position of Telstra assets can only be validated by physically exposing it. Telstra does not warrant or hold out that its plans are accurate and accepts no responsibility for any inaccuracy. Further on site investigation is required to validate the exact location of Telstra plant prior to commencing construction work. A Certified Locating Organisation is an essential part of the process to validate the exact location of Telstra assets and to ensure the asset is protected during construction works.

See the Steps- Telstra Duty of Care that was provided in the email response.

Mains Cable Plan



Report Damage: <https://service.telstra.com.au/customer/general/forms/report-damage-to-telstra-equipment>
Ph - 13 22 03
Email - Telstra.Plans@team.telstra.com
Planned Services - ph 1800 653 935 (AEST bus hrs only) General Enquiries

TELSTRA LIMITED A.C.N. 086 174 781

Generated On 02/08/2023 13:07:08

Sequence Number: 227853420

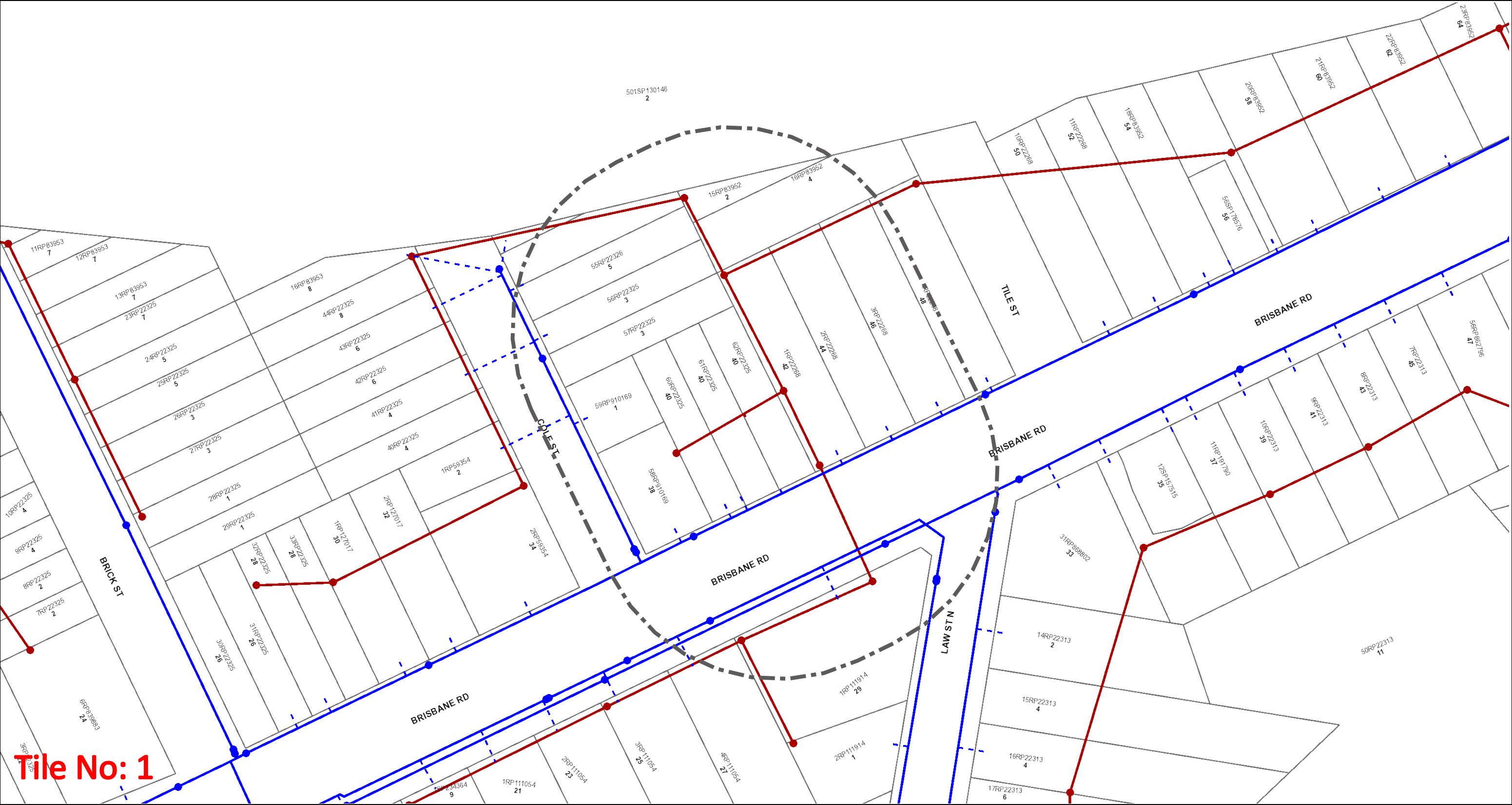
**CAUTION: Critical Network Route in plot area.
DO NOT PROCEED with any excavation prior to
seeking advice from Telstra Plan Services on :
1800 653 935**

WARNING

Telstra plans and location information conform to Quality Level "D" of the Australian Standard AS 5488-Classification of Subsurface Utility Information. As such, Telstra supplied location information is indicative only. Spatial accuracy is not applicable to Quality Level D. Refer to AS 5488 for further details. The exact position of Telstra assets can only be validated by physically exposing it. Telstra does not warrant or hold out that its plans are accurate and accepts no responsibility for any inaccuracy. Further on site investigation is required to validate the exact location of Telstra plant prior to commencing construction work. A Certified Locating Organisation is an essential part of the process to validate the exact location of Telstra assets and to ensure the asset is protected during construction works.

See the Steps- Telstra Duty of Care that was provided in the email response.

Urban Utilities - Water, Recycled Water and Sewer Infrastructure



Tile No: 1

Dial Before You Dig - Urban Utilities Water, Recycled Water and Sewer Infrastructure

DBYD Reference No: 227853422

Date DBYD Ref Received: 02/08/2023

Date DBYD Job to Commence: 09/08/2023

Date DBYD Map Produced: 02/08/2023

This Map is valid for 30 days

Produced By: Urban Utilities

Sewer

- Infrastructure
- ◆ Major Infrastructure
- Network Pipelines
- ▨ Network Structures

Water

- Infrastructure
- ◆ Major Infrastructure
- Network Pipelines
- ▨ Network Structures
- - - Water Service (Indicative only)

N

Map Scale

1:1000

While reasonable measures have been taken to ensure the accuracy of the information contained in this plan response, neither Urban Utilities nor PelicanCorp shall have any liability whatsoever in relation to any loss, damage, cost or expense arising from the use of this plan response or the information contained in it or the completeness or accuracy of such information. Use of such information is subject to and constitutes acceptance of these terms.

The plans are indicative and approximate only and provided without warranties of any kind, express or implied including in relation to accuracy, completeness, correctness, currency or fitness for purpose.

Urban Utilities takes no responsibility and accepts no liability for any loss, damage, costs or liability that may be incurred by any person acting in reliance on the information provided on the plans.

This plan should be used as guide only. Any dimensions should be confirmed on site by the relevant authority.

Based on or contains data provided by the State of Queensland (Department of Natural Resources and Mines) [2020]. In consideration of the State permitting the use of this data you acknowledge and agree that the State gives no warranty in relation to the data (including accuracy, liability in negligence) for any loss, damage or costs (including consequential damage) relating to any use of the data. Data must not be used for direct marketing or be used in breach of the privacy laws. © State of Queensland Department of Natural Resources and Mines [2020]

For further information, please call Urban Utilities on 13 26 57 (8am-6pm weekdays). Faults and emergencies 13 23 64 (24/7).

www.urbanutilities.com.au

ABN 86 673 835 011



Legend

 BYDA Enquiry

Disclaimer: The Plan is provided in response to a Before You Dig request. While all reasonable care has been taken to ensure the accuracy of the information on this plan, its purpose is to provide a general indication of the location of City of Ipswich infrastructure. The information provided may contain errors or omissions and the accuracy may not suit all users. A site inspection and investigation is recommended before commencement of any project based on this data.



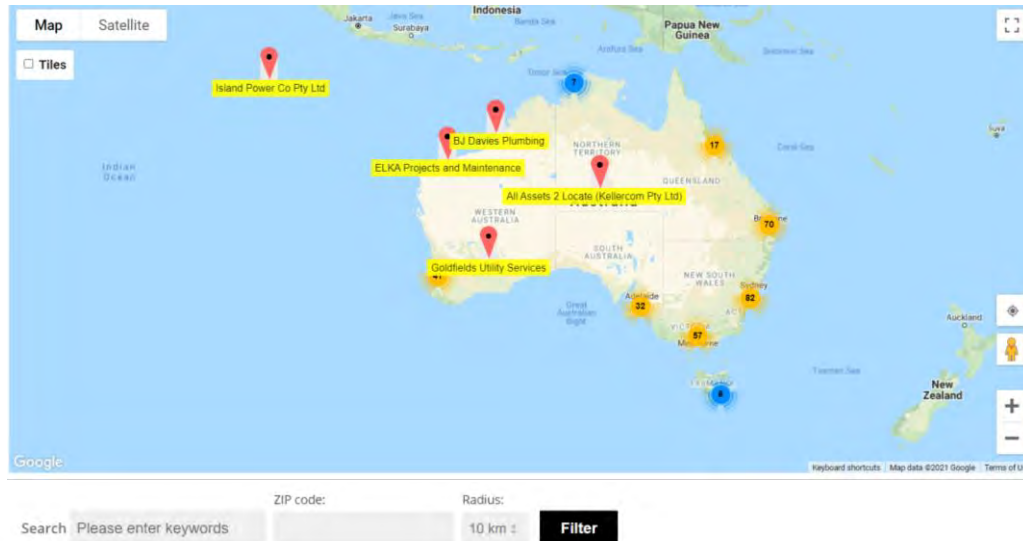
Certified Locating Organisations (CLO)


Find the closest CLO to your worksite on: <https://dbydlocator.com/certified-locating-organisation/>

Read the disclaimer and click:


Accept and Search Now

A national map and an A-Z list of Certified Locating Organisations is displayed.



Use the map to zoom to your work area and choose the closest  Locator indicated.

OR search by entering the **postcode** of your work area.

1. Enter the post/zip code
2. Choose your search radius
3. Click filter (If there is no result, you may have to increase the search radius)
4. Click on the closest  for CLO details or view the results displayed below the map



Locator skills have been tested, and the Organisation has calibrated location and safety equipment.

Telstra is aware of each Certified Locating Organisation and their employee locators.

Only a DBYD Certified Locator registered with a Certified Locating Organisation is authorised to access Telstra network for locating purposes.

Each Certified Locator working for a CLO is issued with a photo ID Card, authorising them to access Telstra pits and manholes for the purpose of cable and plant locations.

Please ask to see your Locators' CLO ID Card.

Before You Dig Australia

Think before you dig

This document has been sent to you because you requested plans of the Telstra network through Before You Dig Australia (BYDA).

If you are working or excavating near telecommunications cables, or there is a chance that cables are located near your site, you are responsible to avoid causing damage to the Telstra network.

Please read this document carefully. Taking your time now and following the steps below can help you avoid damaging our network, interrupting services, and potentially incurring civil and criminal penalties.

Our network is complex and working near it requires expert knowledge. Do not attempt these activities if you are not qualified to do so.



1. Plan

Plan your work with the latest plans of our network.

Plans provided through the BYDA process are indicative only*.

This means the actual location of our asset may differ substantially from that shown on the plans.

Refer to steps 2 and 3 to determine actual location prior to proceeding with construction.



2. Prepare

Engage a DBYD Certified Locating Organisation (CLO) via dbydlocator.com to identify, validate and protect Telstra assets before you commence work.



3. Pothole

Validate underground assets by potholing by hand or using non-destructive vacuum extraction methods.

Electronic detection alone (step 2) is not deemed to validate underground assets and must not be used for construction purposes.

If you cannot validate the Telstra network, you must not proceed with construction.



4. Protect

Protect our network by maintaining the following distances from our assets:

- › 1.0m Mechanical Excavators, Farm Ploughing, Tree Removal
- › 500mm Vibrating Plate or Wacker Packer Compactor
- › 600mm Heavy Vehicle Traffic (over 3 tonnes) not to be driven across Telstra ducts or plant
- › 1.0m Jackhammers/Pneumatic Breakers
- › 2.0m Boring Equipment (in-line, horizontal and vertical)



5. Proceed

You can proceed with your work only once you have completed all the appropriate preparation, potholing and protection.

Report any damage immediately



<https://www.telstra.com.au/forms/report-damage-to-telstra-equipment>



13 22 03

If you receive a message asking for an account or phone number say "I Don't have one"
Then say "Report Damage" then press 1 to speak to an operator.

Relocating assets

If your project requires the relocation of a Telstra asset, please contact the Telstra Network Integrity Group:



[Request Asset Relocation Or Commercial Works \(telstra.com.au\)](https://www.telstra.com.au)



NetworkIntegrity@team.telstra.com



1800 810 443 (AEST business hours only)

Never try to move or alter our network infrastructure without authorisation. By law, only authorised people can work on our assets or enter a facility owned or operated by us. Any interference, including unauthorised entry or tampering, may result in legal action.

Further information

Plan enquiries



1800 653 935 (AEST business hours only)



Telstra.Plans@team.telstra.com

Information on how to find cables and request asset relocations:

<https://www.telstra.com.au/consumer-advice/digging-construction>

Asset Plan Readers

PDF [Adobe Acrobat Reader DC Install for all versions](#)

DWF [Download Design Review | DWF Viewer | Autodesk](#)

Disclaimer and legal details



*Telstra advises that the accuracy of the information provided by Telstra conforms to Quality Level D as defined in AS5488-2013.

It is a criminal offence under the Criminal Code Act 1995 (Cth) to tamper or interfere with telecommunications infrastructure.

Telstra will also take action to recover costs and damages from persons who damage assets or interfere with the operation of Telstra's networks.

By receiving this information including the indicative plans that are provided as part of this information package you confirm that you understand and accept the risks of working near Telstra's network and the importance of taking all of the necessary steps to confirm the presence, alignments and various depths of Telstra's network. This in addition to, and not in replacement of, any duties and obligations you have under applicable law.

When working in the vicinity of a telecommunications plant you have a "Duty of Care" that must be observed. Please read and understand all the information and disclaimers provided below.

The Telstra network is complex and requires expert knowledge to interpret information, to identify and locate components, to pothole underground assets for validation and to safely work around assets without causing damage. If you are not an expert and/or qualified in these areas, then you must not attempt these activities. Telstra will seek compensation for damages caused to its property and losses caused to Telstra and its customers. The 5 P's to prevent damage to Telstra assets are listed above. Construction activities and/or any activities that potentially may impact on Telstra's assets must not commence without first undertaking these steps. Construction activities can include anything that involves breaking ground, potentially affecting Telstra assets.

If you are designing a project, it is recommended that you also undertake these steps to validate underground assets prior to committing to your design.

This Notice has been provided as a guide only and may not provide you with all the information that is required for you to determine what assets are on or near your site of interest. You will also need to collate and understand all of the information received from other Utilities and understand that some Utilities are not a part of the BYDA program and make your own enquiries as appropriate. It is the responsibility of the entities undertaking the works to protect Telstra's network during excavation / construction works.

Telstra owns and retains the copyright in all plans and details provided in conjunction with the applicant's request. The applicant is authorised to use the plans and details only for the purpose indicated in the applicant's request. The applicant must not use the plans or details for any other purpose.

Telstra plans or other details are provided only for the use of the applicant, its servants, agents, or Certified Locating Organisation. The applicant must not give the plans or details to any parties other than these and must not generate profit from commercialising the plans or details.

Telstra, its servants or agents shall not be liable for any loss or damage caused or occasioned by the use of plans and or details so supplied to the applicant, its servants and agents, and the applicant agrees to indemnify Telstra against any claim or demand for any such loss or damage.

Please ensure Telstra plans and information provided always remains on-site throughout the inspection, location, and construction phase of any works.

Telstra plans are valid for 60 days after issue and must be replaced if required after the 60 days.

Data Extraction Fees

In some instances, a data extraction fee may be applicable for the supply of Telstra information. Typically, a data extraction fee may apply to large projects, planning and design requests or requests to be supplied in non-standard formats. For further details contact Telstra Planned Services.

Telstra does not accept any liability or responsibility for the performance of or advice given by a Certified Locating Organisation. Certification is an initiative taken by Telstra towards the establishment and maintenance of competency standards. However, performance and the advice given will always depend on the nature of the individual engagement.

Neither the Certified Locating Organisation nor any of its employees are an employee or agent for Telstra. Telstra is not liable for any damage or loss caused by the Certified Locating Organisation or its employees.

Once all work is completed, the excavation should be reinstated with the same type of excavated material unless specified by Telstra

The information contained within this pamphlet must be used in conjunction with other material supplied as part of this request for information to adequately control the risk of potential asset damage.

When using excavators and other machinery, also check the location of overhead power lines.

Workers and equipment must maintain safety exclusion zones around power lines

WARNING: Telstra plans and location information conform to Quality Level 'D' of the Australian Standard AS 5488 - Classification of Subsurface Utility Information. As such, Telstra supplied location information is indicative only. Spatial accuracy is not applicable to Quality Level D. Refer to AS 5488 for further details. Telstra does not warrant or hold out that its plans are accurate and accepts no responsibility for any inaccuracy shown on the plans. **FURTHER ON SITE INVESTIGATION IS REQUIRED TO VALIDATE THE EXACT LOCATION OF TELSTRA PLANT PRIOR TO COMMENCING CONSTRUCTION WORK.** A plant location service is an essential part of the process to validate the exact location of Telstra assets and to ensure the assets are protected during construction works. The exact position of Telstra assets can only be validated by physically exposing them. Telstra will seek compensation for damages caused to its property and losses caused to Telstra and its customers.

Privacy Note

Your information has been provided to Telstra by BYDA to enable Telstra to respond to your BYDA request. Telstra keeps your information in accordance with its privacy statement. You can obtain a copy at www.telstra.com.au/privacy or by calling us at 1800 039 059 (business hours only).



OPENING ELECTRONIC MAP ATTACHMENTS -

Telstra Cable Plans are generated automatically in either PDF or DWF file types dependant on the site address and the size of area selected. You may need to download and install free viewing software from the internet e.g.



PDF Map Files (max size A3)

Adobe Acrobat Reader (<http://get.adobe.com/reader/>),



DWF Map Files (all sizes over A3)

Autodesk Viewer (Browser) (<https://viewer.autodesk.com/>) or

Autodesk Design Review (<http://usa.autodesk.com/design-review/>) for DWF files.
(Windows)



Telstra DBYD map related enquiries

email - Telstra.Plans@team.telstra.com

1800 653 935 (AEST Business Hours only)



REPORT ANY DAMAGE TO THE TELSTRA NETWORK IMMEDIATELY

Report online - <https://www.telstra.com.au/forms/report-damage-to-telstra-equipment>

Ph: 13 22 03

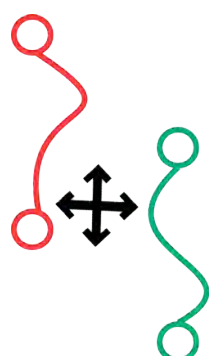
If you receive a message asking for a phone or account number say:

"I don't have one" then say "Report Damage" then press 1 to speak to an operator.



Telstra New Connections / Disconnections

13 22 00



Telstra asset relocation enquiries: 1800 810 443 (AEST business hours only).

NetworkIntegrity@team.telstra.com

<https://www.telstra.com.au/consumer-advice/digging-construction>

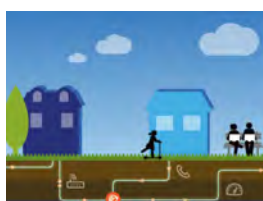
Certified Locating Organisation (CLO)

<https://dbydlocator.com/certified-locating-organisation/>



DBYDCertification

Please refer to attached Accredited Plant Locator.pdf



Telstra Smart Communities

Information for new developments (developers, builders, homeowners)

<https://www.telstra.com.au/smart-community>

LEGEND

IT'S HOW
WE CONNECT



For more info contact a [Certified Locating Organisation](#) or Telstra Plan Services 1800 653 935

	Exchange (Major Cable Present)		Cable Jointing Pit (number / Letter indicating Pit Type)
	Footway Access Chamber (can vary from 1-lid to 12-lid)		Elevated Joint (above ground joint on buried cable)
	Pillar / Cabinet (above ground / free standing)		Telstra Plant in shared Utility trench
	Above ground complex equipment housing (eg RIM) Please Note: This equipment is powered by 240V Electricity		Aerial Cable / Overhead (includes on wall)
	Other Carrier Telecommunications Cable/Asset		Aerial Cable (attached to joint Use Pole eg. Power)
	Distribution cables in Main Cable ducts		Direct Buried Cable
	Main Cable ducts on a Distribution plan Blocked or damaged duct.		Marker Post Installed
	Roadside / Front Boundary 2 pair lead-in to property from pit in street 1		Buried Transponder
	pair working (pair ID 059) 1 pair dead (i.e. spare, not connected)		Marker Post, Transponder
	Side / Rear Property Boundary Property Number		Optical Fibre cable direct buried
	Single to multiple round conduit Configurations 1.2.4.9 respectively (attached text denotes conduit type and size)	<div>Some examples of conduit type and size:</div> <div>A - Asbestos cement, P - PVC / Plastic, C - Concrete, GI - Galanised iron, E - Earthenware Conduit sizes <i>nominally</i> range from 20mm to 100mm P50 50mm PVC conduit P100 100mm PVC conduit A100 100mm asbestos cement conduit</div>	
	Multiple square conduit Configurations 2, 4, 6 respectively (attached text denotes conduit type and size)		
Some Examples of how to read Telstra Plans			
	-50- 10 30 P50 20.0	One 50mm PVC conduit (P50) containing a 50-pair and a 10-pair cable between two 6-pits. approximately 20.0m apart, with a direct buried 30-pair cable along the same route	
	C100 P100 245.0	Two separate conduit runs between two footway access chambers (manholes) approximately 245m apart A nest of four 100mm PVC conduits (P100) containing assorted cables in three ducts (one being empty) and one empty 100mm concrete duct (C100)	

WARNING: Telstra plans and location information conform to Quality Level 'D' of the Australian Standard AS 5488 - Classification of Subsurface Utility Information. As such, Telstra supplied location information is indicative only. Spatial accuracy is not applicable to Quality Level D. Refer to AS 5488 for further details. Telstra does not warrant or hold out that its plans are accurate and accepts no responsibility for any inaccuracy shown on the plans. FURTHER ON SITE INVESTIGATION IS REQUIRED TO VALIDATE THE EXACT LOCATION OF TELSTRA PLANT PRIOR TO COMMENCING CONSTRUCTION WORK. A plant location service is an essential part of the process to validate the exact location of Telstra assets and to ensure the assets are protected during construction works. The exact position of Telstra assets can only be validated by physically exposing them. Telstra will seek compensation for damages caused to its property and losses caused to Telstra and its customers.