



Before You Dig Australia

Think before you dig

This document has been sent to you because you requested plans of the Telstra network through Before You Dig Australia (BYDA).

If you are working or excavating near telecommunications cables, or there is a chance that cables are located near your site, you are responsible to avoid causing damage to the Telstra network.

Please read this document carefully. Taking your time now and following the steps below can help you avoid damaging our network, interrupting services, and potentially incurring civil and criminal penalties.

Our network is complex and working near it requires expert knowledge. Do not attempt these activities if you are not qualified to do so.

Further Information



Cable Plan enquiries
1800 653 935 (AEST business hours only)



Telstra.Plans@team.telstra.com



Information on how to find cables and request asset relocations:
<https://www.telstra.com.au/consumer-advice/digging-construction>



Opening Digital Plan Attachments. Asset Plan Readers:

PDF [Adobe Acrobat Reader DC Install for all versions](#)
DWF Map Files (all sizes over A3)
[Autodesk Viewer \(Browser\)](#) or
[Autodesk Design Review](#) (Microsoft Windows)

Report any damage immediately



<https://www.telstra.com.au/forms/report-damage-to-telstra-equipment>



13 22 03
If you receive a message asking for an account or phone number say
"I Don't have one"
Then say, "Report Damage" and listen to the prompts.

Relocating Telstra Assets

If your project requires the relocation of a Telstra asset, please contact the Telstra Network Integrity Group:



1800 810 443 (AEST business hours only)



NetworkIntegrity@team.telstra.com

Never try to move or alter our network infrastructure without authorisation. By law, only authorised people can work on our assets or enter a facility owned or operated by us. Any interference, including unauthorised entry or tampering, may result in legal action.

Certified Locating Organisation (CLO)



Engage a CLO



Find your Closest CLO to identify , validate and protect Telstra Assets before you commence you work.
<https://dbydlocator.com/certified-locating-organisation/>



1. Plan

Plan your work with the latest plans of our network.

Plans provided through the BYDA process are indicative only*.

This means the actual location of our asset may differ substantially from that shown on the plans.

Refer to steps 2 and 3 to determine actual location prior to proceeding with construction.



2. Prepare

Engage a DBYD Certified Locating Organisation (CLO) via dbydlocator.com to identify, validate and protect Telstra assets before you commence work.



3. Pothole

Validate underground assets by potholing by hand or using non-destructive vacuum extraction methods.

Electronic detection alone (step 2) is not deemed to validate underground assets and must not be used for construction purposes.

If you cannot validate the Telstra network, you must not proceed with construction.



4. Protect

Protect our network by maintaining the following distances from our assets:

- › 1.0m Mechanical Excavators, Farm Ploughing, Tree Removal
- › 500mm Vibrating Plate or Wacker Packer Compactor
- › 600mm Heavy Vehicle Traffic (over 3 tonnes) not to be driven across Telstra ducts or plant
- › 1.0m Jackhammers/Pneumatic Breakers
- › 2.0m Boring Equipment (in-line, horizontal and vertical)



5. Proceed

You can proceed with your work only once you have completed all the appropriate preparation, potholing and protection.

Disclaimer and legal details



*Telstra advises that the accuracy of the information provided by Telstra conforms to Quality Level D as defined in AS5488-2013.

It is a criminal offence under the Criminal Code Act 1995 (Cth) to tamper or interfere with telecommunications infrastructure.

Telstra will also take action to recover costs and damages from persons who damage assets or interfere with the operation of **Telstra's** networks.

By receiving this information including the indicative plans that are provided as part of this information package you confirm that you understand and accept the risks of working near **Telstra's** network and the importance of taking all of the necessary steps to confirm the presence, alignments and various depths of **Telstra's** network. This in addition to, and not in replacement of, any duties and obligations you have under applicable law.

When working in the vicinity of a telecommunications plant you have a "Duty of Care" that must be observed. Please read and understand all the information and disclaimers provided below.

The Telstra network is complex and requires expert knowledge to interpret information, to identify and locate components, to pothole underground assets for validation and to safely work around assets without causing damage. If you are not an expert and/or qualified in these areas, then you must not attempt these activities. Telstra will seek compensation for damages caused to its property and losses caused to Telstra and its customers. Construction activities and/or any activities that potentially may impact on Telstra's assets must not commence without first undertaking these steps. Construction activities can include anything that involves breaking ground, potentially affecting Telstra assets.

If you are designing a project, it is recommended that you also undertake these steps to validate underground assets prior to committing to your design.

This Notice has been provided as a guide only and may not provide you with all the information that is required for you to determine what assets are on or near your site of interest. You will also need to collate and understand all of the information received from other Utilities and understand that some Utilities are not a part of the BYDA program and make your own enquiries as appropriate. It is the responsibility of the entities undertaking the works to protect **Telstra's** network during excavation / construction works.

Telstra owns and retains the copyright in all plans and details provided in conjunction with the applicant's request. The applicant is authorised to use the plans and details only for the purpose indicated in the applicant's request. The applicant must not use the plans or details for any other purpose.

Telstra plans or other details are provided only for the use of the applicant, its servants, agents, or Certified Locating Organisation. The applicant must not give the plans or details to any parties other than these and must not generate profit from commercialising the plans or details.

Telstra, its servants or agents shall not be liable for any loss or damage caused or occasioned by the use of plans and or details so supplied to the applicant, its servants and agents, and the applicant agrees to indemnify Telstra against any claim or demand for any such loss or damage.

Please ensure Telstra plans and information provided always remains on-site throughout the inspection, location, and construction phase of any works.

Telstra plans are valid for 60 days after issue and must be replaced if required after the 60 days.

Data Extraction Fees

In some instances, a data extraction fee may be applicable for the supply of Telstra information. Typically, a data extraction fee may apply to large projects, planning and design requests or requests to be supplied in non-standard formats. For further details contact Telstra Planned Services.

Telstra does not accept any liability or responsibility for the performance of or advice given by a Certified Locating Organisation. Certification is an initiative taken by Telstra towards the establishment and maintenance of competency standards. However, performance and the advice given will always depend on the nature of the individual engagement.

Neither the Certified Locating Organisation nor any of its employees are an employee or agent for Telstra. Telstra is not liable for any damage or loss caused by the Certified Locating Organisation or its employees.

Once all work is completed, the excavation should be reinstated with the same type of excavated material unless specified by Telstra

The information contained within this pamphlet must be used in conjunction with other material supplied as part of this request for information to adequately control the risk of potential asset damage.

When using excavators and other machinery, also check the location of overhead power lines.

Workers and equipment must maintain safety exclusion zones around power lines

WARNING: Telstra plans and location information conform to Quality Level 'D' of the Australian Standard AS 5488 - Classification of Subsurface Utility Information. As such, Telstra supplied location information is indicative only. Spatial accuracy is not applicable to Quality Level D. Refer to AS 5488 for further details. Telstra does not warrant or hold out that its plans are accurate and accepts no responsibility for any inaccuracy shown on the plans. **FURTHER ON SITE INVESTIGATION IS REQUIRED TO VALIDATE THE EXACT LOCATION OF TELSTRA PLANT PRIOR TO COMMENCING CONSTRUCTION WORK.** A plant location service is an essential part of the process to validate the exact location of Telstra assets and to ensure the assets are protected during construction works. The exact position of Telstra assets can only be validated by physically exposing them. Telstra will seek compensation for damages caused to its property and losses caused to Telstra and its customers.

Privacy Note

Your information has been provided to Telstra by BYDA to enable Telstra to respond to your BYDA request. Telstra keeps your information in accordance with its privacy statement. You can obtain a copy at www.telstra.com.au/privacy or by calling us at 1800 039 059 (business hours only).



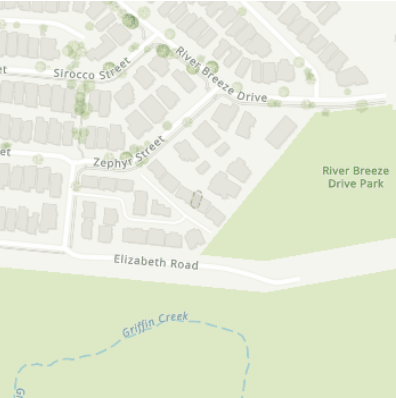
Contact Details

Contact	Contact number	Company	Enquirer ID
Image Property	(07) 3263 1811	Image property	3003158
Email		Address	
sales.support@imageproperty.com.au		57 Kirby Road Aspley QLD 4034	

Job Site and Enquiry Details

WARNING: The map below only displays the location of the proposed job site and does not display any asset owners' pipe or cables. The area highlighted has been used only to identify the participating asset owners, who will send information to you directly.

Enquiry date	Start date	End date	On behalf of	Job purpose	Locations	Onsite activities
07/02/2024	14/02/2024	14/02/2024	Private	Design	Both Road, Nature Strip, Footpath	Planning & Design



Check that the location of the job site is correct. If not, you must submit a new enquiry.

If the scope of works change or plan validity dates expire, you must submit a new enquiry.

Do NOT dig without plans. Safe excavation is your responsibility. If you don't understand the plans or how to proceed safely, please contact the relevant asset owners.

User Reference	Address	Notes/description
17/1 Santa Ana Lane	17/1 Santa Ana Ln Griffin QLD 4503	-

Your Responsibility and Duty of Care

- Lodging an enquiry does not authorise project commencement.** Before starting work, you must obtain all necessary information from all affected asset owners.
- If you don't receive plans within 2 business days, contact the asset owner & quote their sequence number.
- Always follow the 5Ps of Safe Excavation (page 2), and locate assets before commencing work.
- Ensure you comply with State legislative requirements for Duty of Care and safe digging.
- If you damage an underground asset, you MUST advise the asset owner immediately.
- By using the BYDA service, you agree to the [Privacy Policy](#) and [Term of Use](#).
- For more information on safe digging practices, visit www.byda.com.au

Asset Owner Details

Below is a list of asset owners with underground infrastructure in and around your job site. It is your responsibility to identify the presence of these assets. Plans issued by Members are indicative only unless specified otherwise. Note: not all asset owners are registered with BYDA. You must contact asset owners not listed here directly.

Referral ID (Seq. no)	Authority Name	Phone	Status
235115690	APA Group Gas Networks (70710)	1800 085 628	NOTIFIED
235115692	Energex QLD	13 12 53	NOTIFIED
235115689	Moreton Bay Regional Council	1300 477 161	NOTIFIED
235115688	NBN Co Qld	1800 687 626	NOTIFIED
235115691	Telstra QLD South East	1800 653 935	NOTIFIED
235115687	Unitywater South	1300 086 489	NOTIFIED

END OF UTILITIES LIST



Plan

Plan your job. Use the BYDA service at least one day before your job is due to begin, and ensure you have the correct plans and information required to carry out a safe project.



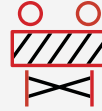
Prepare

Prepare by communicating with asset owners if you need assistance. Look for clues onsite. Engage a skilled Locator.



Pothole

Potholing is physically sighting the asset by hand digging or hydro vacuum extraction.



Protect

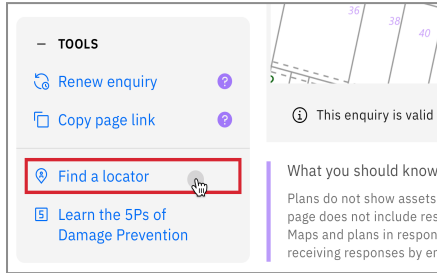
Protecting and supporting the exposed infrastructure is the responsibility of the excavator. Always erect safety barriers in areas of risk and enforce exclusion zones.



Proceed

Only proceed with your excavation work after planning, preparing, potholing (unless prohibited), and having protective measures in place.

Engage a skilled Locator



When you lodge an enquiry you will see skilled Locators to contact

Visit the Certified Locator website directly and search for a locator near you

dbydlocator.com/certified-locating-organisation

Book a FREE BYDA Session



BYDA offers two different sessions to suit you and your organisation's needs. The free sessions are offered in two different formats - online and face-to-face:

1. **Awareness Session:** Understand the role of BYDA, safe excavation practices, complying with asset-owner instructions, and the consequences of damages. Learn how to mitigate and avoid potential damage and harm and ensure a safe work environment.
2. **Plan Reading Session:** Develop the skills to interpret asset owners' plans, legends, and symbols effectively. Understand the complexities of plan interpretation to ensure smooth project execution.

To book a session, visit:

byda.com.au/contact/education-awareness-enquiry-form/

BOOK NOW

UNITYWATER BYDA MAP

Sequence Number: 235115687
Job Number: 35989281
Printed On: 7/02/2024

Emergency Situations
Call Unitywater:
1300 086 489

This information on this plan is valid
for 30 days from "Printed On" date.

Legend

Extent of Unitywater Area

Water

Water Pump Station

Water Service

Water Valve

Water Pipe (Abandoned)

Water Hydrant

Water Fitting

Water Main

Trunk Main

Reticulation Main

Sewer

Sewer Pump Station

Sewer Maintenance Hole

Sewer Valve

Sewer Fitting

Sewer Gravity Main

Trunk Main

Reticulation Main

Overflow Main

Sewer Pipe (Abandoned)

Sewer Pressure Main

Pressure Sewer

Rising Main

Vacuum Main

Pressure Sewer Service

Sewer Service

Recycled Water

Recycled Water Pump Station

Recycled Water Valve

Recycled Water Hydrant

Recycled Water Fitting

Recycled Water Pipe (Abandoned)

Recycled Water Main

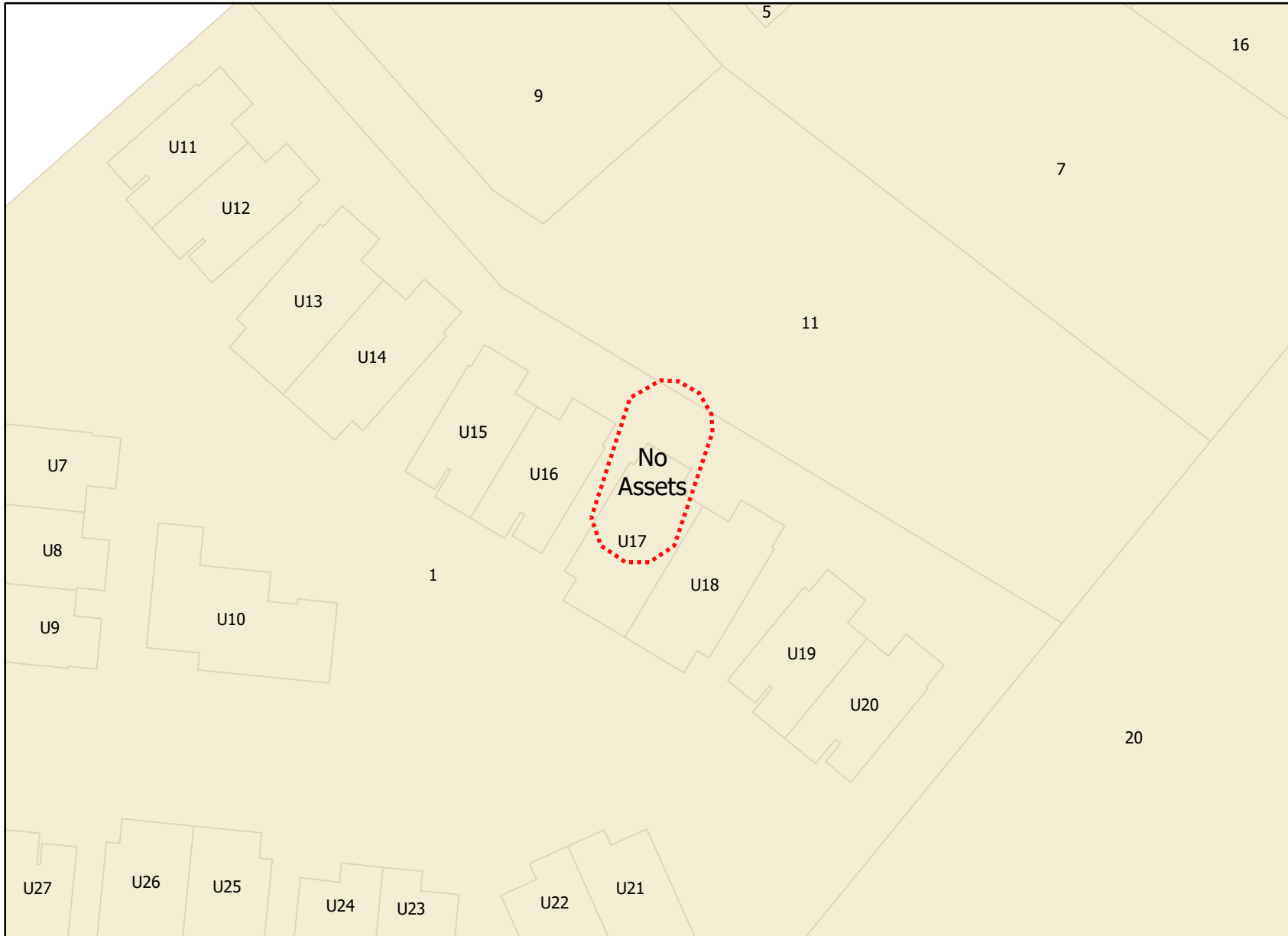
Map Tile: 1
Scale: 1:1000
(If printed at 100%
on A3 size paper)


Unitywater

Before You Dig Australia
Geospatial Information Systems
Ground Floor, 33 King St
Caboolture QLD 4510
Inquiries: 1300 0 Unity (1300 086 489)
Email: dbyd@unitywater.com

Disclaimer

These Maps are supplied under the following conditions:-
Mapping details are supplied from information contained in Unitywater's records which may have been furnished to Unitywater by other persons. Unitywater gives no warranty or guarantee of any kind, expressed, implied, or statutory, to the correctness or accuracy of the map details or the degree of compliance with any standards in this matter. Persons making decisions with financial or legal implications must not rely upon the map details shown on this plan for the purpose of determining whether any particular facts or circumstances exist and Unitywater (and its officers and agents) expressly disclaim responsibility for any loss or damage suffered as a result of placing reliance upon this information.

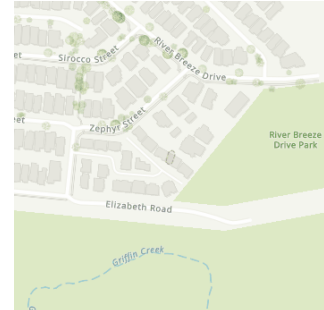


Legend
 BYDA Enquiry

Disclaimer: The Plan is provided in response to a Before You Dig request. While all reasonable care has been taken to ensure the accuracy of the information on this plan, its purpose is to provide a general indication of the location of Moreton Bay Regional Council infrastructure. The information provided may contain errors or omissions and the accuracy may not suit all users. A site inspection and investigation is recommended before commencement of any project based on this data.

Image Property
Image property
57 Kirby Road
Aspley QLD 4034

7/02/2024



Dear Image Property

Response to your recent enquiry: Unitywater infrastructure is located on the property

Your recent Before You Dig (BYDA) enquiry about the location of water and sewerage assets on your property of interest has been sent to Unitywater.

Unitywater has located water and/or sewerage infrastructure on the property. Attached is a map locating the infrastructure and identifying the type of infrastructure that has been identified. The map and information contained on this map is valid for 30 days from Unitywater plan print date.

Also attached to this letter is additional information about your responsibilities in relation to our infrastructure.

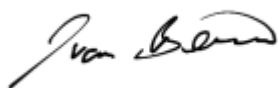
Sequence No: 235115687

Job No: 35989281

Location: 17/1 Santa Ana Ln Griffin

If you have further questions, please call the Customer Service Centre on 1300 0 UNITY (1300 086 489).

Yours sincerely



Ivan Beirne

Head of Asset Management



Important Information

Disclaimer

All Unitywater's records, data and information supplied via BYDA are indicative only. You agree that any plans supplied to you has been or will be provided only for your convenience and has not been and will not be relied upon by you for any purpose.

You also agree that Unitywater does not assume any responsibility or duty of care in respect of, or warrant, guarantee or make any representation as to the Data (including its accuracy, reliability, currency or suitability).

Unitywater's plans only indicates the general vicinity of infrastructure in a geographic area and does not state the depths at which infrastructure could be buried. You must first physically locate the infrastructure by utilising relevant site detection methodologies prior to performing any works or undertaking any activities near or adjacent to our infrastructure. You are solely responsible for the selection of appropriate site detection methodologies at all times.

To the fullest extent permitted by law, Unitywater will not be liable to you in contract, tort, equity, under statute or otherwise arising from or in connection with the provision of any plans to you via BYDA.

Compliance with laws

There may be both indicated and unmarked hazards, dangers or encumbrances, including underground asbestos pipes and abandoned mains within your nominated search area. You are solely responsible for ensuring that appropriate care is taken at all times and that you comply with all mandatory requirements relating to such matters, including in relation to workplace health and safety.

Damaged Infrastructure

Please note that it is an offence under Section 192 of the *Water Supply (Safety and Reliability) Act 2008* to interfere with our infrastructure without Unitywater's written consent.

You may be liable to Unitywater for any loss of or damage to our infrastructure, together with any consequential or indirect loss or damage (including without limitation, loss of use, loss of profits or loss of revenue) arising from or in connection with any interference with Unitywater's infrastructure by you or any other person for which you are legally responsible.

Any damage to Unitywater's Infrastructure must be reported immediately to the (24 Hours) Faults and Emergencies contact number on **1300 0 UNITY** (1300 086 489).

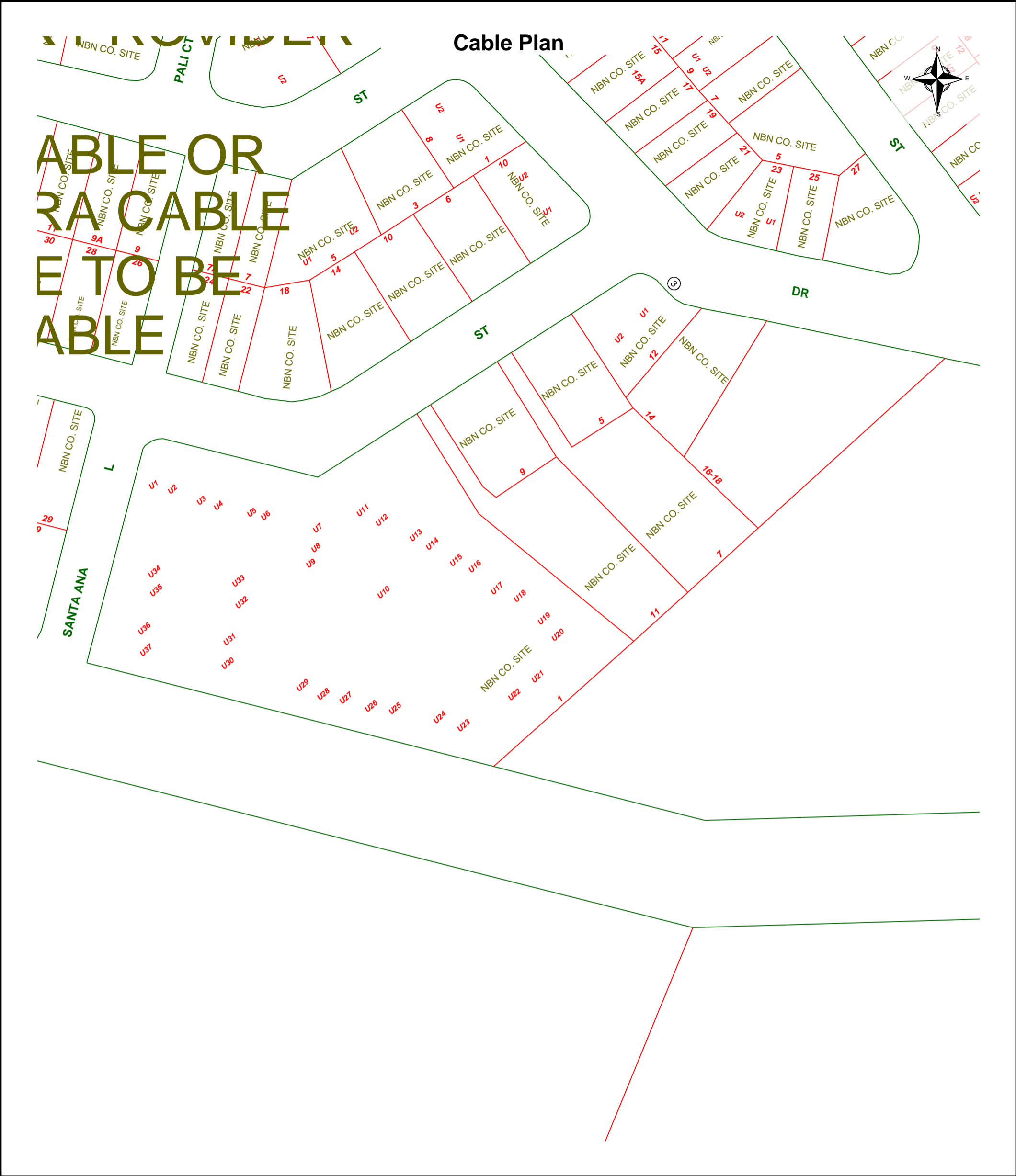
Copyright


All Data is copyright.

Notes

If you require further details on sewerage and water infrastructure, Detailed Infrastructure Plans are available for purchase. A request form is available through Unitywater's website <http://www.unitywater.com> or by contacting the Customer Service Centre on 1300 0 UNITY (1300 086 489).

Unitywater water and sewerage infrastructure is located across Moreton Bay, Sunshine Coast and Noosa local government areas. For information outside these areas you will need to contact the relevant authority.



	Report Damage: https://service.telstra.com.au/customer/general/forms/report-damage-to-telstra-equipment Ph - 13 22 03 Email - Telstra.Plans@team.telstra.com Planned Services - ph 1800 653 935 (AEST bus hrs only) General Enquiries	Sequence Number: 235115691
	TELSTRA LIMITED A.C.N. 086 174 781	Please read Duty of Care prior to any excavating
	Generated On 07/02/2024 17:35:02	

WARNING
Telstra plans and location information conform to Quality Level "D" of the Australian Standard AS 5488-Classification of Subsurface Utility Information.
As such, Telstra supplied location information is indicative only. Spatial accuracy is not applicable to Quality Level D.
Refer to AS 5488 for further details. The exact position of Telstra assets can only be validated by physically exposing it.
Telstra does not warrant or hold out that its plans are accurate and accepts no responsibility for any inaccuracy.
Further on site investigation is required to validate the exact location of Telstra plant prior to commencing construction work.
A Certified Locating Organisation is an essential part of the process to validate the exact location of Telstra assets and to ensure the asset is protected during construction works.

See the Steps- Telstra Duty of Care that was provided in the email response.



APA Group
PO Box 6014 Halifax
Street,
South Australia 5000



For your immediate information **THERE IS A CRITICAL GAS PIPELINE OR INFRASTRUCTURE (Gas Assets)** located in close vicinity to your works.

07/02/2024

Company: Image property
Image Property
57 Kirby Road
Aspley
QLD 4034

sales.support@imageproperty.com.au

Dear Image Property

Sequence Number: 235115690
Worksite Address: 17/1 Santa Ana Ln
Griffin
QLD 4503

Thank you for your Before You Dig enquiry regarding the location of Gas Assets.

We confirm there are CRITICAL Gas Assets located in close vicinity of the above location. Damage to gas assets may result in explosion, fire and personal injury.

You are hereby notified before you commence any works you are required to complete the Work In The Vicinity Of Critical Gas Assets request form and forward this to APA as soon as practicable.

Any work activity in vicinity of Critical Gas Assets operated by APA requires an **Authority to Work Permit** and may require attendance by an APA Site Watch representative whilst work is in progress. Please ensure you read and comply with all the relevant requirements contained in this response to your enquiry.

Contacts – APA Group

Enquiry	Contact Numbers
General enquiries or feedback regarding this information or gas assets. QLD Only All other States	APA - Before You Dig Officer Phone: 1800 085 628 Email: PermitsQld@apa.com.au Phone: 1800 085 628 Email: DBYDNetworksAPA@apa.com.au
Gas Emergencies	Phone: 1800 GAS LEAK (1800 427 532)



Please find below the following information:

1. **Duty of Care** - If you are unclear of your obligations under these requirements please contact the Before You Dig officer for clarification.
2. **An overview map** highlighting the area of your intended works.
3. **Map(s) showing APA operated Gas Assets** within the area of your intended works.
4. **Work In The Vicinity Of Critical Gas Assets request form** - Please complete and forward to APA as soon as practicable via email DBYDNetworksAPA@apa.com.au or PermitsQld@apa.com.au (QLD only), or the address at the top of this document. **A minimum of three (3) business days in advance of any work commencement** is required to process Authority To Work Request applications and provide a response.
5. **Site Watch** – Following consideration of the information received by APA in the Work In The Vicinity Of Critical Gas Assets request form, we may require an APA Site Watch representative to be present on site whilst some or all of the proposed site works are undertaken. Refer information for Site Watch in the Duty of Care section of this document.

Important Information:

- This information is valid for 30 days from the date of this response.
- This information shall be available on site whilst conducting works.
- This information has been generated by an automated system based on the area highlighted in your BYDA request and has not been independently verified. Please check the maps represent the area you requested. If they do not, please contact the APA - Before You Dig officer.
- For some BYDA enquiries, you may receive two (2) responses from APA. Please read both responses carefully as they relate to different assets.

Yours Faithfully,

APA Group

Duty of Care - Working Around Gas Assets

General Conditions

- BYDA enquiries are valid for 30 days. If your works commence after 30 days from the date of this response a new enquiry is required to validate location information.
- The location information supplied in this document shall be used as a guide only. APA does not guarantee the accuracy or completeness of the map and does not make any warranty about the data. APA is not under any liability to the user for any loss or damage (including consequential loss or damage) which the user may suffer resulting from the use of this information or maps.
- It is the responsibility of the excavator to expose all Gas Assets by hand digging. Gas Asset depths may vary according to ground conditions.
- Gas (inlet) Services connecting Gas Assets in the street to the gas meter on the property are not marked on the map. South Australia Only - If a meter box is installed on the property, a sketch of the gas service location may be found inside the gas meter box. APA does not guarantee the accuracy or completeness of these sketches.
- Road authorities, council's, and their authorised contractors and agents are responsible to pot-hole or use other suitable methods to verify the location and depth of all gas assets, including Gas (inlet) Services, prior to commencing any works.
- The location and depth of underground mains & services, including those in the road corridor and footpath, may vary in alignment and depth of cover, as a result of changes to road, footpath or surface levels subsequent to installation.
- Some Gas Assets may be installed inside a casing. Locations where a Gas Asset changes from being located within, to being located outside a casing may not be marked on the maps provided.
- The use of hydro-vacuum excavation in vicinity to Gas Assets is permitted under the following conditions:
 - Maximum water pressure of 1000psi unless otherwise advised.
 - A minimum distance of 100mm shall be maintained between the end of the pressure wand nozzle and gas assets.
 - Vertical movements of the pressure wand nozzle or inserting the nozzle in vicinity of the gas asset prohibited
 - The use of root cutting heads is prohibited.

Where a gas asset has been exposed via hydro-vacuum excavation a visual check must be undertaken to ensure no damage has occurred to the pipe or it's coating. If any damage has occurred notify the APA Before You Dig Officer.

Critical Gas Assets - Conditions

It is your responsibility to follow these important conditions when working in vicinity of Critical Gas Assets

- A Work In The Vicinity Of Critical Gas Assets request form must be submitted to APA Group prior to any work commencing.
- Prior to any works commencing in the vicinity of Critical Gas Assets the person undertaking the work must receive from APA an Authority to work permit.
- The work in the vicinity of Critical Gas Assets will require attendance by an APA Site Watch representative whilst work is in progress unless stated otherwise on the Authority to work permit.
- Penalties apply to excavators commencing work in the vicinity of Critical Gas Assets prior to receiving an APA Group 'Authority to Work' permit and/or if an APA Site Watch representative is not in attendance where required.

Site Watch / Locate Services

Site Watch - A condition of an APA Authority To Work permit is for an APA Site Watch representative be present on site whilst conducting works. The purpose is to monitor works and protect gas assets in the vicinity from potential damage by the works.

Locate – This service is available on request, where an APA representative will visit your work site before work commencement to electronically locate and mark on the ground surface all gas assets in vicinity of the work site.

These services are provided under the following conditions:

- Contact APA - Before You Dig officer to make a booking. Contact details in the table above.
- The following rates are chargeable for these services:

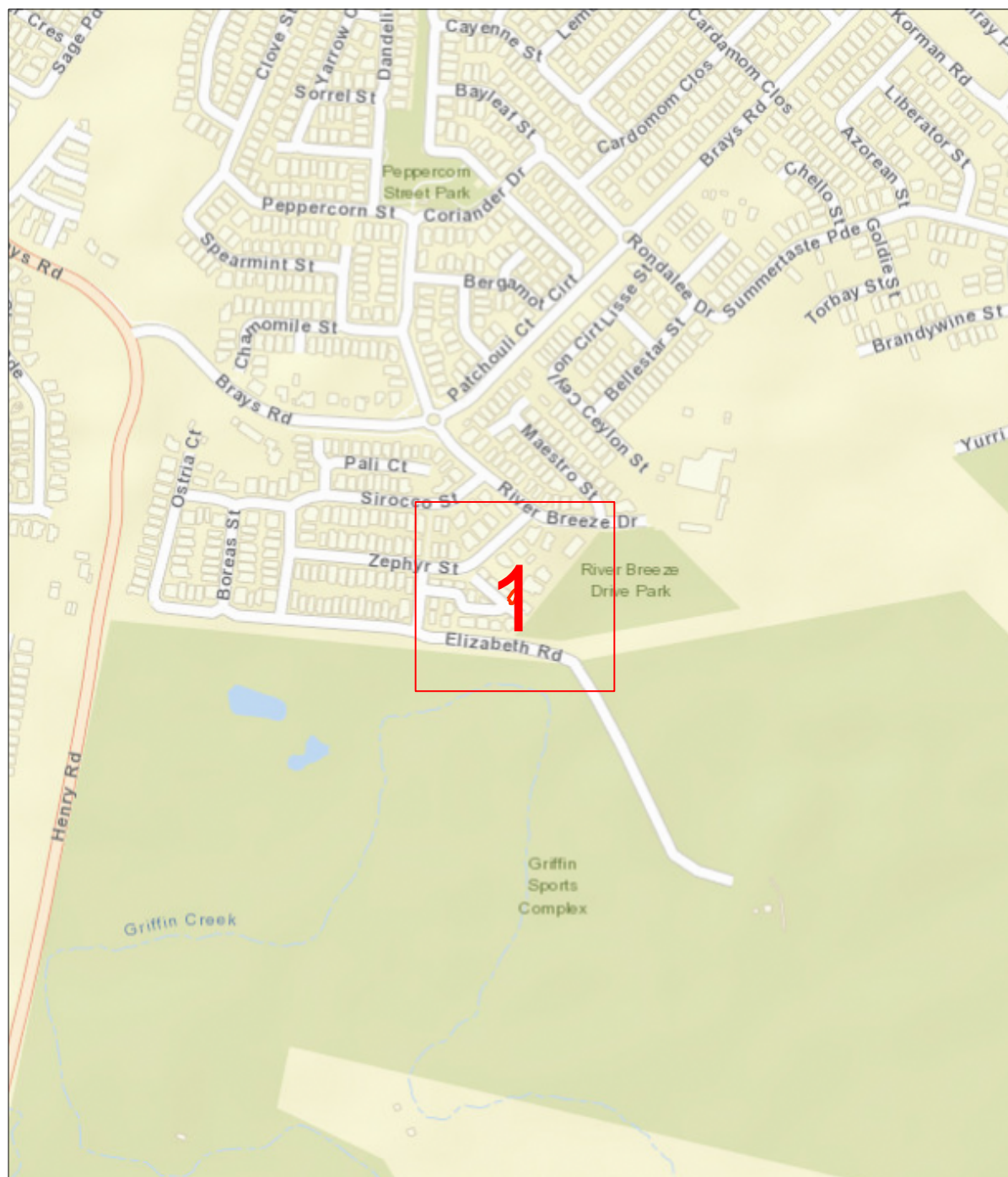
Item	Rate (excl. gst)
Site Watch – Business Hours	\$143.42 per hour
Site Watch - After Hours	\$175.06 per hour
Electronic Locate – Business Hours	\$143.42 per hour
Electronic Locate – After Hours	\$175.06 per hour
Cancellation Fee	2 hrs Business Hours rate (where cancellations received <u>after</u> 12pm (midday) 1 business day prior to the booking)
Mains Proving	Quoted on request

Notes:

- 1hr minimum charge applies.
- A Cancellation Fee applies where cancellations are received after 12pm (midday) one(1) business day prior to the booked Site Watch / Locate service
- Contact APA - Before You Dig officer for state specific hours of business.



Site Address	17/1 Santa Ana Ln Griffin 4503	Sequence No	235115690
Name	Image Property		
Email	sales.support@imageproperty.com.au		



Map Sources: Esri, Garmin, HERE, FAO, NOAA, USGS, © OpenStreetMap contributors, and the GIS User Community

Scale 1: 6000



Enquiry Area

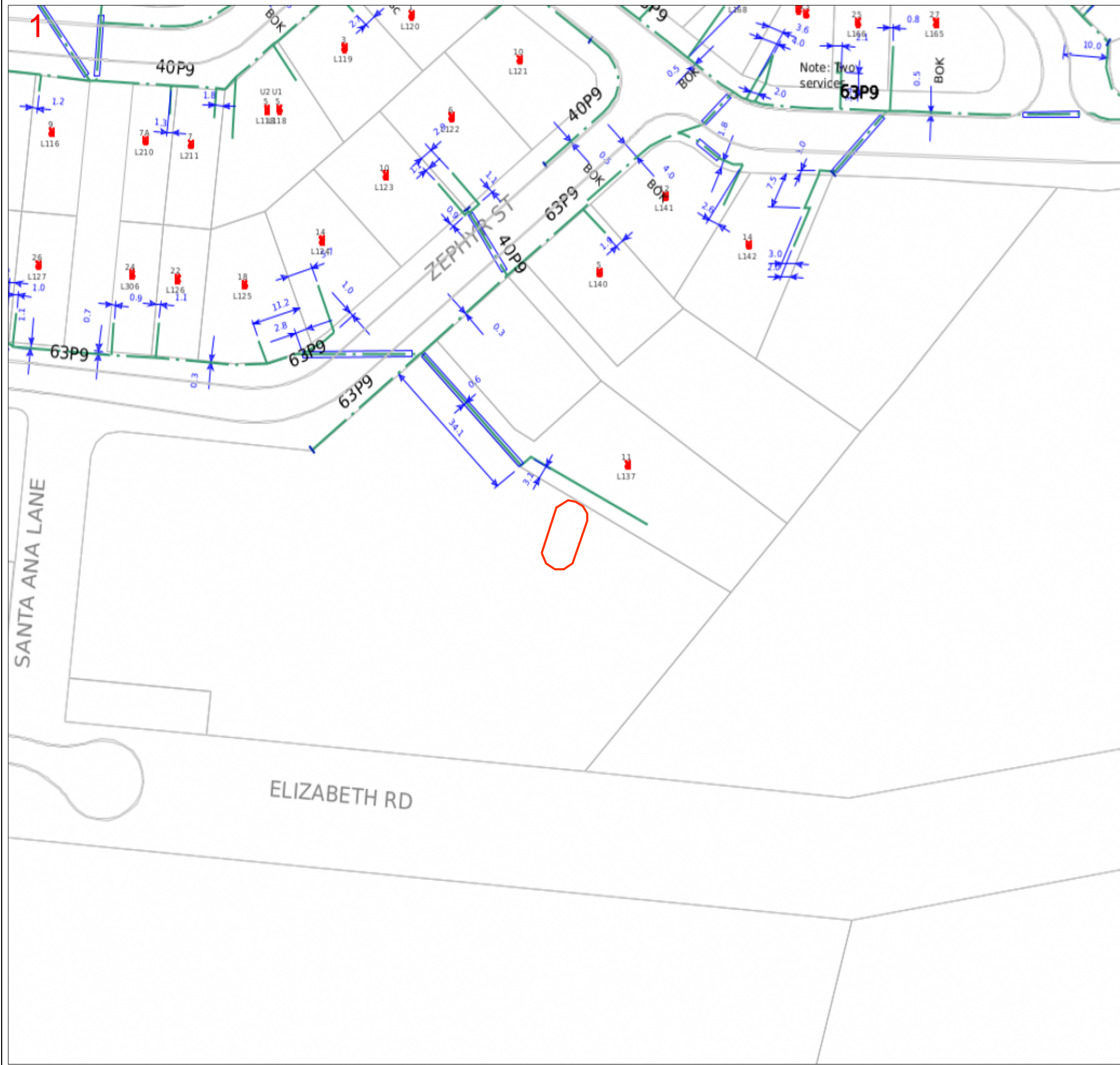


Map Key Area



Site Address	17/1 Santa Ana Ln Griffin 4503	Sequence No	235115690
--------------	-----------------------------------	-------------	-----------

Before you commence any works you are required to complete the attached 'Work In The Vicinity Of Critical Gas Assets' request form and forward this to APA as soon as practicable.



LEGEND

PIPE AND BOUNDARIES

LOW PRESSURES

MEDIUM PRESSURES

HIGH PRESSURES

TRANSMISSION PRESSURES

PRIORITY MAIN (BEHIND PIPE)

PROPOSED (COLOUR BY PRESSURE)

LPG (COLOUR BY PRESSURE)

ABANDONED

IDLE

SLEEVE

CASING / SPLIT (BEHIND PIPE)

EASEMENT/ JURISDICTION

EXAMPLES

40P6 in 80C2

63S8

PIPE CODE / MATERIALS

C# (e.g. C2)

CU

N2

P# (e.g. P6)

P6,P7,P9-P12

P2,P4,P8

S# (e.g. S8)

W2

W3

Pipe diameter in millimetres is shown before pipe code

e.g. 40P6 = 40mm nominal diameter

OBJECTS or TERMS

VALVES

BURIED VALVES

REGULATORS

GAS SUPPLIED = YES

CP RECTIFIER UNIT

CP TEST POINT/ ANODE

SYPHON

TRACE WIRE POINT

PIPELINE MARKER

NOT TIED IN

DEPTH OF COVER


BACK / FRONT OF KERB

Map Key

1

Scale 1:700

0 0.009km



Mapping information is provided as AS5488-2022 Quality Level D

APA Group • PO Box 6014 Halifax Street SA 5000 • Email: DBYDNetworksAPA@apa.com.au • Template: APA Critical September 2023

Page 6 of 9 • 07/02/2024

REQUEST TO WORK IN THE VICINITY OF CRITICAL GAS ASSETS CONDITIONS

It is the proponent's* responsibility to read these conditions and complete the request form

1. **A minimum of three (3) business days** in advance of any work commencement is required to process Authority To Work Request applications and provide a response.
2. This request form must be accompanied by a detailed schedule of works.
3. For any gas leak related work this request form must include a detailed sequence of events, outlining all aspects of work. Work is not permitted to proceed until an APA Authority to Work permit has been issued.
4. When an APA Authority to Work permit is issued, the permit will provide any applicable conditions whilst conducting excavation or work in vicinity of the Gas Assets.
5. APA Group Site Watch may be required to be on site during the proposed excavation or work.
6. When an APA Authority to Work permit is issued, the proponent is responsible for complying with all permit conditions.
7. Where applicable, excavation or work must not commence until the requestor has received an APA Authority to Work Permit.
8. Where applicable, penalties apply to excavators commencing work in the vicinity of Critical Gas Assets prior to receiving an APA Group 'Authority to Work Permit'. For further information, as relevant, refer to:
 - NSW Gas Supply Act 1996 – Sec 64 C, Requirements in relation to carrying out of certain excavation work.
 - NSW Gas Supply Act 1996 Sec 50A, Excavation work affecting gas work.
 - Victoria: Pipelines Act 2005 – Section 118, Digging near pipelines and Section 119, Interference with pipeline.
 - South Australia: Gas Act 1997 – Section 83, Notice of work that may affect gas infrastructure.
 - Northern Territory: Energy Pipelines Act as in force at 14 October 2015 Section 66, Threat to pipeline.
 - QLD: Gas Supply Act 2003 – 90, 91 Requirement to consult if gas infrastructure affected.

** Person or company requesting to undertake works in proximity to critical gas assets.*

WORK IN THE VICINITY OF CRITICAL GAS ASSETS REQUEST FORM

Return this form to: DBYDNetworksAPA@apa.com.au or (QLD only) PermitsQld@apa.com.au

Enquiries: Contact APA Before You Dig officer - 1800 085 628

Work / Excavation Site Details

Number:	Street:		
Suburb:		State:	
Sequence Number / 235115690 :			
Requestors Name:			
Company Name:			
Name of Authorised Company Site Representative:			
Email:			
Phone:		Mobile:	
Signature:			

Description of Work / Excavation

<i>Activity/Excavation Details:</i>			
Tick Applicable			
Excavation		Change to surface level	
Service crossing		Boring	
Proving		Other (provide details)	
Earthworks			
Excavator Size, Tooth Type & Tooth Size (provide details)			

Work / Excavation Drawings Attached (circle)

Yes

No

Proposed Work Dates and Times

From			To	
Excavation	Date	Time	Date	Time
	/ /	am/pm	/ /	am/pm
Backfill	Date	Time	Date	Time
	/ /	am/pm	/ /	am/pm

Work Classification Self-Assessment (circle)

Class 1 Works crossing a critical gas asset	Class 2 Works within 3m of a critical gas asset	Class 3 Works involving large excavations, vibrations or blasting beyond 3m of the critical gas asset
---	---	---

Insurer and Policy Details

Policy Number		Policy Expiry Date	
Insurance Cover – Current Level (\$)			

*Requestor / Billing Details – **Mandatory Information**

Company / Requestor Name:	
Address:	
Purchase Order:	Email:
Phone:	
Requestor Name:	Requestor Signature:



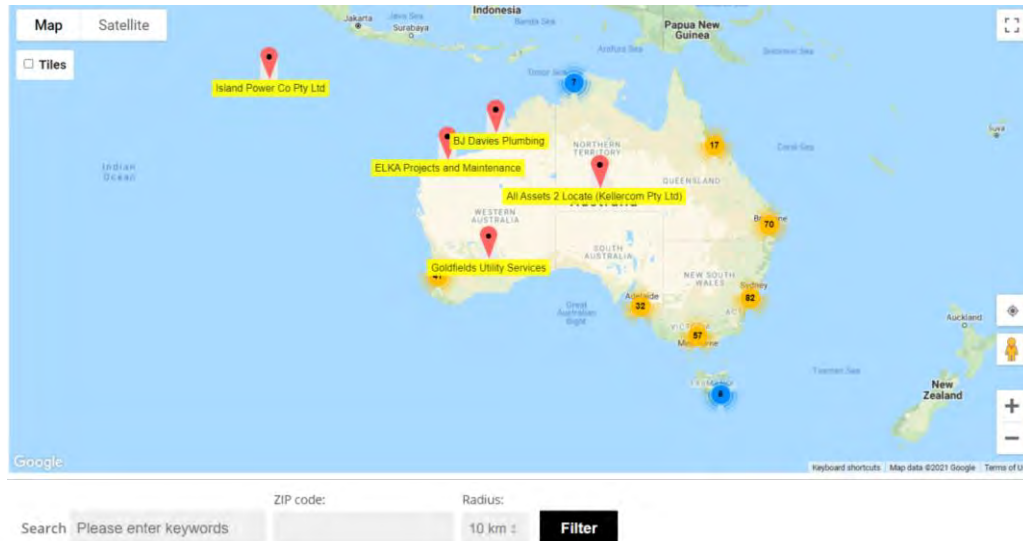
Certified Locating Organisations (CLO)


Find the closest CLO to your worksite on: <https://dbydlocator.com/certified-locating-organisation/>

Read the disclaimer and click:


Accept and Search Now

A national map and an A-Z list of Certified Locating Organisations is displayed.



Use the map to zoom to your work area and choose the closest  Locator indicated.

OR search by entering the **postcode** of your work area.

1. Enter the post/zip code
2. Choose your search radius
3. Click filter (If there is no result, you may have to increase the search radius)
4. Click on the closest  for CLO details or view the results displayed below the map



Locator skills have been tested, and the Organisation has calibrated location and safety equipment.

Telstra is aware of each Certified Locating Organisation and their employee locators.

Only a DBYD Certified Locator registered with a Certified Locating Organisation is authorised to access Telstra network for locating purposes.

Each Certified Locator working for a CLO is issued with a photo ID Card, authorising them to access Telstra pits and manholes for the purpose of cable and plant locations.

Please ask to see your Locators' CLO ID Card.



OPENING ELECTRONIC MAP ATTACHMENTS -

Telstra Cable Plans are generated automatically in either PDF or DWF file types, this dependant on the site address and or the size of the area that you have selected. You may need to download and install free viewing software from the internet to view the plan files. e.g.



DWF Map Files (all sizes over A3)

Autodesk Viewer (Internet Browser) (<https://viewer.autodesk.com/>) best option for IOS & Android

Autodesk Design Review (<http://usa.autodesk.com/design-review/>) for DWF files. (Windows)



PDF Map Files (max size A3)

Adobe Acrobat Reader (<http://get.adobe.com/reader/>)



Telstra BYDA map related enquiries

email - Telstra.Plans@team.telstra.com

1800 653 935 (AEST Business Hours only)



REPORT ANY DAMAGE TO THE TELSTRA NETWORK IMMEDIATELY Report online:

<https://www.telstra.com.au/forms/report-damage-to-telstra-equipment>

Ph: **13 22 03**

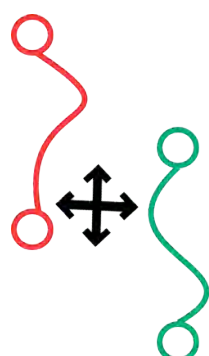
If you receive a message asking for a phone or account number say:

"I don't have one" then say "Report Damage" then press 1 to speak to an operator.



Telstra New Connections / Disconnections

13 22 00



Telstra asset relocation enquiries: **1800 810 443** (AEST business hours only).

NetworkIntegrity@team.telstra.com

<https://www.telstra.com.au/consumer-advice/digging-construction>

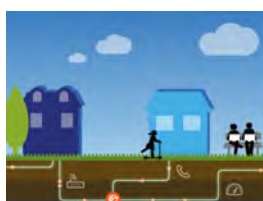


DBYD Certification

Certified Locating Organisation (CLO)

<https://dbydlocator.com/certified-locating-organisation/>

Please refer to attached Accredited Plant Locator.pdf



Telstra Smart Communities

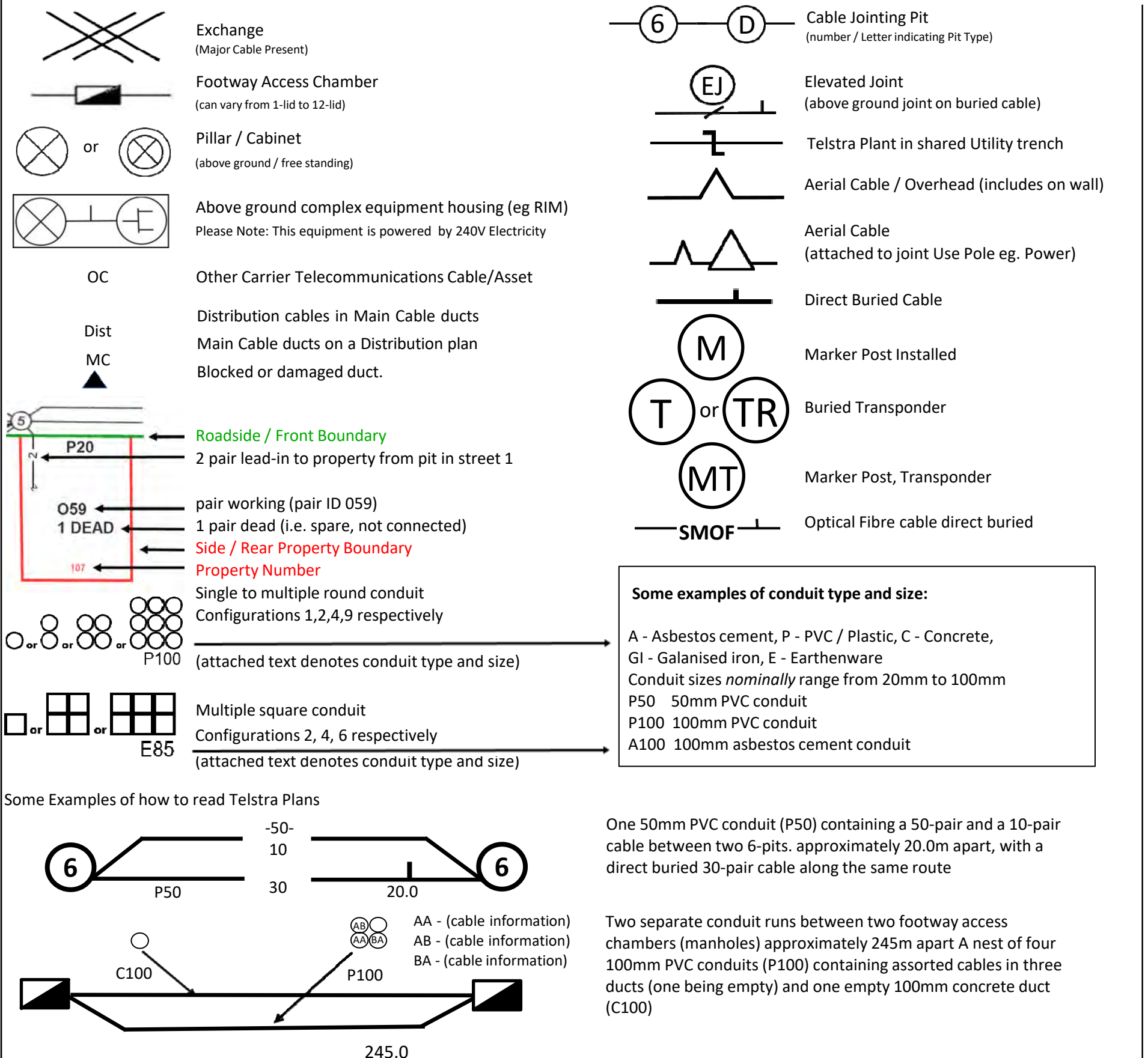
Information for new developments (developers, builders, homeowners)

<https://www.telstra.com.au/smart-community>

LEGEND



For more info contact a [Certified Locating Organisation](#) or Telstra Plan Services 1800 653 935



WARNING: Telstra plans and location information conform to Quality Level 'D' of the Australian Standard AS 5488 - Classification of Subsurface Utility Information. As such, Telstra supplied location information is indicative only. Spatial accuracy is not applicable to Quality Level D. Refer to AS 5488 for further details. Telstra does not warrant or hold out that its plans are accurate and accepts no responsibility for any inaccuracy shown on the plans. FURTHER ON SITE INVESTIGATION IS REQUIRED TO VALIDATE THE EXACT LOCATION OF TELSTRA PLANT PRIOR TO COMMENCING CONSTRUCTION WORK. A plant location service is an essential part of the process to validate the exact location of Telstra assets and to ensure the assets are protected during construction works. The exact position of Telstra assets can only be validated by physically exposing them. Telstra will seek compensation for damages caused to its property and losses caused to Telstra and its customers.

BYDA terms and conditions

Duty of care for everyone



Responsibilities – (When Working in the Vicinity of Energex Electrical Equipment)

Extreme care must be taken during non-mechanical or mechanical excavation as damage to Energex underground electrical equipment can lead to injury or death of workers or members of the public. Electrical equipment includes underground cables, conduits and other associated underground electrical equipment used for controlling, generating, supplying, transforming or transmitting electricity.

A person conducting a business or undertaking (PCBU) must ensure the person's business or undertaking is conducted in a way that is electrically safe. This includes:

- a) ensuring that all electrical equipment used in the conduct of the person's business or undertaking is electrically safe;
- b) if the person's business or undertaking includes the performance of electrical work, ensuring the electrical safety of all persons and property likely to be affected by the electrical work; and
- c) if the person's business or undertaking includes the performance of work, whether or not electrical work, involving contact with, or being near to, exposed parts, ensuring persons performing the work are electrically safe.

In addition, a PCBU at a workplace must ensure, so far as is reasonably practicable, that no person, plant or thing at the workplace comes within an unsafe distance of an underground electric line.

Workers and other persons must also take reasonable care for their own and other person's electrical safety. This includes complying, so far as is reasonably able, with any reasonable instructions given by Energex to ensure compliance with the [Electrical Safety Act 2002](#)

BYDA terms and conditions

Duty of care for everyone

The following matters must be considered when working near Energex electrical equipment:

The PCBU must ensure, so far as is reasonably practicable, that no person, plant or thing at the workplace comes within an unsafe distance of an underground electric line (see section 68 of the [Electrical Safety Regulation 2013](#))

1. It is the responsibility of the architect, consulting engineer, developer, and head contractor in the project planning stages to design for minimal impact and protection of Energex electrical equipment.
2. It is the constructor's responsibility to:
 - a) Anticipate and request plans of Energex electrical equipment for a location at a reasonable time before construction begins.
 - b) Visually locate Energex electrical equipment by hand or vacuum excavation where construction activities may damage or interfere with Energex electrical equipment.
 - c) To notify Energex if the information provided is found to be not accurate or assets are found on site that are not recorded on the Energex BYDA plans.
 - d) Read and understand all the information and disclaimers provided.

Note: A constructor may include but not limited to a PCBU, Designer, Project Manager, Installer, Contractor or a Civil Contractor

3. Comply with applicable work health and safety and electrical safety codes of practice including but not limited to:
 - a) Working near overhead and underground electric lines – [Electrical safety codes of practice 2020](#)
 - b) Managing electrical risk in the workplace – [Electrical safety code of practice 2013](#)
 - c) Managing the risks of plant in the workplace – [Electrical safety code of practice 2013](#)
 - d) Excavation work – [Electrical safety code of practice 2013](#)

IMPORTANT NOTES:

- As the alignment and boundaries of roadways with other properties (and roads within roadways) frequently change, the alignments and boundaries contained within Energex plans and maps will frequently differ from present alignments and boundaries "on the ground". Accordingly, in every case where it appears that alignments and boundaries have shifted, or new roadways have been added, the constructor should obtain confirmation of the actual position of Energex cables and pipelines under the roadways. In no case should the constructor rely on statements of third parties in relation to the position of Energex cables and pipelines. It is the applicant's responsibility to accurately locate all services as part of the design and/or prior to excavation.
- Energex does not provide information on private underground installations, including consumers' mains that may run from Energex mains onto private property. Assets located on private property are the responsibility of the owner for identification and location.
- Energex plans are circuit diagrams or pipe indication diagrams only and indicate the presence of plant in the general vicinity of the geographical area shown. Exact ground cover and alignments cannot be given with any certainty; as such levels can change over time.
- All underground conduits are presumed to contain asbestos. Refer to "Code of Practice for the Management and Control of Asbestos in Workplaces [NOHSC: 2018 (2005)] - https://www.safeworkaustralia.gov.au/system/files/documents/1702/codeofpracticeformanagementcontrolofasbestosintheworkplace_nohsc2018-2005
- Plans provided by Energex do not show the presence of any Overhead Network
- In addition to underground cables marked on attached plan there may be underground Earth Conductors in the vicinity of the nominated work area(s) that are not marked on the plans.
- There may also be other buried assets such as tanks for fluid filled cables that do not appear on GIS plots but are shown on detailed as constructed drawings.
- Being aware of your obligations in [s 304] Excavation work— underground essential services information under the [Work Health and Safety Regulation 2011](#), Chapter 6 Construction work, Part 6.3 Duties of person conducting business or undertaking. This includes but is not limited to taking reasonable steps to obtain the current information & providing this information to persons engaged to carry out the excavation work. For further information please refer to: - <http://www.legislation.qld.gov.au/LEGISLTN/SLs/2011/11SL240.pdf>
- Energex plans are designed to be printed in colour and as an A4 Landscape orientation

BYDA terms and conditions

Duty of care for everyone

Conditions – (When Working in the Vicinity of Energex Electrical Equipment)

Records:

The first step before any excavation commences is to obtain records of Energex plant in the vicinity of the work. For new work, records should be obtained during the planning and design stage. The records provided by Energex must be made available to all construction groups on site. Where plant information is transferred to plans for the proposed work, care must be exercised to ensure that important detail is not lost in the process.

Plans and or details provided by Energex are current for four weeks from the date of dispatch and should be disposed of by shredding or any other secure disposal method after use. A new BYDA enquiry must be made for proposed works/activities to be undertaken outside of the four-week period.

Energex retains copyright of all plans and details provided in connection with your request. Energex plans or other details are provided for the use of the applicant, its servants, or agents, and shall not be used for any unauthorised purpose. On receipt of BYDA plans and before commencing excavation work or similar activities near Energex's plant, check to see that it relates to the area you have requested and carefully locate this plant first to avoid damage. If you are unclear about any information contained in the plan, please contact Energex on the General Enquiries number listed above for further advice.

Energex, its servants or agents shall not be liable for any loss or damage caused or occasioned by the use of plans and or details so supplied to the applicant, its servants and agents, and the applicant agrees to indemnify Energex against any claim or demand for any such loss or damage.

The constructor is responsible for all plant damages when works commence prior to obtaining Energex plans, or failure to follow agreed instructions, or failure to demonstrate all reasonable measures were taken to prevent the damage once plans were received from Energex. Energex reserves all rights to recover compensation for loss or damage caused by interference or damage, including consequential loss and damages to its cable network, or other property.

NOTE: Where your proposed work location contains Energex 33kV or greater Underground cables please access the [Energex Working Near Underground Cables 33kV or Higher web page](#) for more information.

Location of Cables:

Examining the records is not sufficient, as reference points may change from the time of installation. Records must also be physically proven when working in close proximity to them. The exact location of plant likely to be affected shall be confirmed by use of an electronic cable and pipe locator followed by **careful hand or vacuum excavation to the level of cable protection cover strips or conduits**. When conducting locations, please be aware that **no** unauthorised access is permitted to Energex Assets– including Pits, Low Voltage Disconnection Boxes, Low Voltage Pillars or High Voltage Link Boxes.

Hand or vacuum excavation must be used in advance of excavators. In any case, where any doubt exists with respect to interpretation of cable records, contact Energex on the General Enquires number listed above for further advice.

If the constructor is unable to locate Energex underground assets within 5 metres of nominal plan locations, they should contact the Energex General Enquires number listed above for further advice.

If unknown cables or conduits (i.e. not shown on issued BYDA plans) are located during excavation:

1. Call the ELECTRICITY EMERGENCIES number listed above
2. Treat cables as if alive, post a person to keep all others clear of the excavation until Energex crew attend to make safe.
3. All work in the vicinity of damaged plant should cease and the area should be vacated until a clearance to continue work has been obtained from an Energex officer.

Electrical Cable Installation Methods:

Energex cables are installed with a variety of protection devices including:

- | | |
|---|---------------------------------------|
| 1. Clay paving bricks or tiles marked "Electricity" or similar (also unmarked) | 2. Concrete or PVC cover slabs |
| 3. PVC, A/C or fibro conduit, fibre reinforced concrete, iron or steel pipe | 4. Concrete encased PVC or steel pipe |
| 5. Thin plastic marker tape | 6. Large pipes housing multiple ducts |
| 7. Multiple duct systems, including earthenware or concrete 2-, 4-, and 6-way ducts and shamrocks | |

Note: Some cables are known to be buried without covers and cables may change depth or alignment along the route.

Excavating Near Cables:

For all work within 2.5 m of nominal location, the constructor is required to hand or vacuum excavate (pothole) and expose the plant, hence proving its exact location before work can commence.

Cable protection cover strips shall not be disturbed. Excavation below these cover strips, or into the surrounding backfill material is not permitted.

BYDA terms and conditions

Duty of care for everyone

Excavating Parallel to Cables:

If construction work is parallel to Energex cables, then hand or vacuum excavation (potholing) at least every 4 m is required to establish the location of all cables, hence confirming nominal locations before work can commence. *Generally, there is no restriction to excavations parallel to Energex cables to a depth not exceeding that of the cable. **Note: Cable depths & alignment may change suddenly.***

Separation from Cables:

Any service(s) must be located at the minimum separation as per the tables below:

Table 1. Minimum Separation Requirements for Underground Services Running Parallel with Energex Assets

(Minimum Separation required in mm)							
Voltage Level	Gas	Communication or TV	Water		Sanitary drainage		Storm Water
			≤DN 200	>DN200	≤DN 200	>DN 200	
LV	250	100	500	*1000	500	1000	500
HV		300					
*Contact Energex/council to obtain specific separation distances							

Table 2. Minimum Separation Requirements for Underground Services Crossing Energex Assets

(Minimum Separation required in mm)					
Voltage Level	Gas	Communication or TV	Water	Sanitary drainage	Storm Water
LV & HV	100	100	300	300	100

Where the above table does not list a separation requirement for a particular underground service then 300mm shall be used.

Excavating Across Cables:

The standard clearance between services shall be maintained as set down in Table 2 above. If the width or depth of the excavation is such that the cables will be exposed or unsupported, then Energex shall be contacted to determine whether the cables should be taken out of service, or whether they need to be protected or supported. In no case shall a cable cover be removed without approval. A cable cover may only be removed under the supervision of an Energex authorised representative. Protective cover strips when removed must be replaced under Energex supervision. Under no circumstances shall they be omitted to allow separation between Energex cables and other services.

Heavy Machinery Operation Over Cables:

Where heavy "Crawler" or "Vibration" type machinery is operated over the top of cables, a minimum cover of 450 mm to the cable protective cover mains must be maintained using load bearing protection whilst the machinery is in operation. For sensitive cables (i.e. 33 and 110kV fluid and gas filled cables), there may be additional constraints placed on vibration and settlement by Energex.

Directional Boring Near Cables:

When boring parallel to cables, it is essential that trial holes are carefully hand or vacuum excavated at regular intervals to prove the actual location of the conduits/cables before using boring machinery. Where it is required to bore across the line of cables, the actual location of the cables shall first be proven by hand or vacuum excavation. A trench shall be excavated one metre from the side of the cables where the auger will approach to ensure a minimum clearance of 500mm above and below all LV, 11kV, 33kV & 110/132kV cables shall be maintained.

Explosives:

Explosives must not be used within 10 metres of cables, unless an engineering report is provided indicating that no damage will be sustained. Clearances should be obtained from Energex's Planning Engineer for use of explosives in the vicinity of Energex cables.

Damage Reporting:

All damage to cables, conduits and pipes must be reported no matter how insignificant the damage appears to be. Even very minor damage to cable protective coverings can lead to eventual failure of cables through corrosion of metal sheaths and moisture ingress.

If any Damaged conductor is found:

1. Call the ELECTRICITY EMERGENCIES number listed above
2. Treat cables as if alive, post a person to keep all others clear of the excavation until Energex crew attend to make safe.
3. All work in the vicinity of damaged plant should cease and the area should be vacated until a clearance to continue work has been obtained from an Energex officer.

BYDA terms and conditions

Duty of care for everyone

Plant Solutions and Assistance:

If plant location plans or visual location of Energex plant by hand or vacuum excavation reveals that the location of Energex plant is situated wholly or partly where the developer or constructor plans to work, then Energex shall be contacted to assist with your development of possible engineering solutions.

If Energex relocation or protection works are part of the agreed solution, then payment to Energex for the cost of this work shall be the responsibility of the principal developer or constructor. Energex will provide an estimated quotation for work on receipt of the developer's or constructor's order number before work proceeds.

It will be necessary for the developer or constructor to provide Energex with a written Work Method Statement for all works in the vicinity of or involving Energex plant. This Work Method Statement should form part of the tendering documentation and work instruction.

Vacuum Excavations (Hydro Vac)

When operating hydro vac equipment to excavate in vicinity of underground electrical assets (cables/conduits):

Fitted with:

- Nonconductive (neoprene rubber or equivalent) vacuum (suction) hose.
- Oscillating nozzle on pressure wand with water pressure adjusted to not exceeding 2000 psi.

Maintain a minimum distance of 200mm between end of pressure wand and underground electrical assets. DO NOT insert the pressure wand jet directly into subsoil.

Ensure pressure wand is not directly aimed at underground electrical assets (cables/conduits).

Safety Notices (Underground Work)

There is no exclusion zone applicable for underground electrical assets – conduits, cables (unless cable is damaged, or conductors or terminations have been exposed) therefore there is **no requirement for a written Safety Advice** to be obtained provided the work location does not contain overhead electric lines or other exposed live parts.

Further information on Working Safely around Energex assets:

https://www.energex.com.au/_data/assets/pdf_file/0010/211231/Working-near-OH-UG-lines-BS001405R107ver2.pdf

Thank you for your interest in maintaining a safe and secure Electricity Distribution network. Energex welcomes your feedback on this document via email to dbyd@energex.com.au.

General enquiries (7am - 5pm Mon to Fri)

13 12 53

Life threatening emergencies only triple zero (000) or

13 19 62

E: custserve@energex.com.au

W: energex.com.au/lualmap

E: dbyd@energex.com.au

ABN: 40 078 849 055

To re-submit or change the nominated search area please visit www.BYDA.com.au





BYDA SYMBOLOLOGY LEGEND

	Cross Bonding Link Box - Critical		Planned Cross Bonding Link Box - New/Updated
	Disconnect Box - Critical		Planned Cross Bonding Link Box - Remove
	Ring Main Unit		Planned Disconnect Box - New/Updated
	Distribution Pad Substation		Planned Disconnect Box - Remove
	Earth		Planned Distribution Pad Substation - New/Updated
	Remote Earth		Planned Distribution Pad Substation - Remove
	Cable Marker		Planned Distribution Ground Substation - New/Updated
	Handhole		Planned Distribution Ground Substation - Remove
	Manhole		Planned Ring Main Unit - New/Updated
	Commercial Industrial Pillar		Planned Ring Main Unit - Remove
	Distribution Cabinet		Planned Earth - New/Updated
	Link Pillar		Planned Earth - Remove
	Service Pillar		Planned Cable Marker - New/Updated
	Feeder Pillar		Planned Cable Marker - Remove
	Pole		Planned Remote Earth - New/Updated
	Streetlight Column		Planned Remote Earth - Remove
	Communication Junction Pillar		Planned Underground Warning Post - New/Updated
	Communication Pit		Planned Underground Warning Post - Remove
	Fibre Patch Panel		Planned Pilot Cubicle - New/Updated
	Pilot Cubicle		Planned Pilot Cubicle - Remove
	Underground Asset 33kV and above		Planned Fibre Patch Panel - New/Updated
	Underground Asset below 33kV		Planned Fibre Patch Panel - Remove
	Underground Conduit with or without cable		Planned Commercial Industrial Pillar - New/Updated
	Pit		Planned Commercial Industrial Pillar - Remove
	Communication Boundary		Planned Distribution Cabinet - New/Updated
	Reserve (RE)		Planned Distribution Cabinet - Remove
	Water Resource (WR)		Planned Link Pillar - New/Updated
	Cadastral Parcels		Planned Link Pillar - Remove
	Planned Jointing Pit - New/Updated		Planned Service Pillar - New/Updated
	Planned Jointing Pit - Remove		Planned Service Pillar - Remove
	Planned Communication Boundary - New/Updated		Planned Pole - New/Updated
	Planned Communication Boundary - Remove		Planned Pole - Remove
	Planned Tunnel/Trench/Bore - New/Updated		Planned Manhole - New/Updated
	Planned Tunnel/Trench/Bore - Remove		Planned Manhole - Remove
			Planned Streetlight Column - New/Updated
			Planned Streetlight Column - Remove
			Planned Handhole - New/Updated
			Planned Handhole - Remove
			Planned Communication Junction Pillar - New/Updated
			Planned Communication Junction Pillar - Remove

All underground cables shall be treated as being energised. Where a cable is located that is not represented on the ENERGEX BYDA map, then ENERGEX shall be contacted immediately.

For Emergency Situations
please call 13 19 62

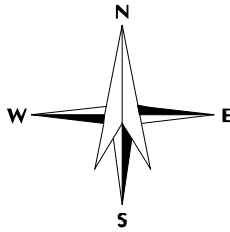


BYDA

Sequence: 235115692
Date: 07/02/2024
Scale: 1:500
Tile No: 1

For a full list of Map
Symbols, please
refer to the supplied
BYDA Symbology
Legend page


AS5488 Category “D” Plan



DISCLAIMER: While reasonable measures have been taken to ensure the accuracy of the information contained in this plan response, neither Energex nor PelicanCorp shall have any liability whatsoever in relation to any loss, damage, cost or expense arising from the use of this plan response or the information contained in it or the completeness or accuracy of such information. Use of such information is subject to and constitutes acceptance of these terms.

This output provides details of the ENERGEX electrical network. As variations map exist no responsibility is incurred by ENERGEX for the accuracy or completeness of the information provided. Exact positions of cables and electrical connectivity should be confirmed on site.

To: Image Property
Phone: Not Supplied
Fax: Not Supplied
Email: sales.support@imageproperty.com.au

Dial before you dig Job #:	35989281	
Sequence #	235115688	
Issue Date:	07/02/2024	
Location:	17/1 Santa Ana Ln , Griffin , QLD , 4503	

Information

The area of interest requested by you contains one or more assets.

nbn™ Assets	Search Results
Communications	Asset identified
Electricity	No assets

In this notice **nbn™ Facilities** means *underground fibre optic, telecommunications and/or power facilities, including but not limited to cables, owned and controlled by nbn™*

Location of nbn™ Underground Assets

We thank you for your enquiry. In relation to your enquiry at the above address:

- **nbn's** records indicate that there **ARE nbn™** Facilities in the vicinity of the location identified above ("Location").
- **nbn** indicative plan/s are attached with this notice ("Indicative Plans").
- The Indicative Plan/s show general depth and alignment information only and are not an exact, scale or accurate depiction of the location, depth and alignment of **nbn™** Facilities shown on the Plan/s.
- In particular, the fact that the Indicative Plans show that a facility is installed in a straight line, or at uniform depth along its length cannot be relied upon as evidence that the facility is, in fact, installed in a straight line or at uniform depth.
- You should read the Indicative Plans in conjunction with this notice and in particular, the notes below.
- You should note that, at the present time, the Indicative Plans are likely to be more accurate in showing location of fibre optics and telecommunications cables than power cables. There may be a variation between the line depicted on the Indicative Plans and the location of any power cables. As such, consistent with the notes below, particular care must be taken by you to make your own enquiries and investigations to precisely locate any power cables and manage the risk arising from such cables accordingly.
- The information contained in the Indicative Plan/s is valid for 28 days from the date of issue set out above. You are expected to make your own inquiries and perform your own investigations (including engaging appropriately qualified plant locators, e.g DBYD Certified Locators, at your cost to locate **nbn™** Facilities during any activities you carry out on site).

We thank you for your enquiry and appreciate your continued use of the Dial Before You Dig Service. For any enquiries related to moving assets or Planning and Design activities, please visit the **nbn Commercial Works** website to complete the online application form. If you are planning to excavate and require further information, please email dbyd@nbnc.com.au or call 1800 626 329.

Notes:

1. You are now aware that there are **nbn™** Facilities in the vicinity of the above property that could be damaged as a result activities carried out (or proposed to be carried out) by you in the vicinity of the Location.
2. You should have regard to section 474.6 and 474.7 of the *Criminal Code Act 1995* (CoA) which deals with the consequences of interfering or tampering with a telecommunications facility. Only persons authorised by **nbn** can interact with **nbn's** network facilities.
3. Any information provided is valid only for **28 days** from the date of issue set out above.

Referral Conditions

The following are conditions on which **nbn** provides you with the Indicative Plans. By accepting the plans, you are agreeing to these conditions. These conditions are in addition, and not in replacement of, any duties and obligations you have under applicable law.

1. **nbn** does not accept any responsibility for any inaccuracies of its plans including the Indicative Plans. You are expected to make your own inquiries and perform your own investigations (including engaging appropriately qualified plant locators, e.g DBYD Certified Locators, at your cost to locate **nbn™** Facilities during any activities you carry out on site).
2. You acknowledge that **nbn** has specifically notified you above that the Indicative Plans are likely to be more accurate in showing location of fibre optics and telecommunications cables than power cables. There may be a variation between the line depicted on the Indicative Plans and the location of any power cables.
3. You should not assume that **nbn™** Facilities follow straight lines or are installed at uniform depths

along their lengths, even if they are indicated on plans provided to you. Careful onsite investigations are essential to locate the exact position of cables.

4. In carrying out any works in the vicinity of **nbn**™ Facilities, you must maintain the following minimum clearances:
 - 300mm when laying assets inline, horizontally or vertically.
 - 500mm when operating vibrating equipment, for example: jackhammers or vibrating plates.
 - 1000mm when operating mechanical excavators.
 - Adherence to clearances as directed by other asset owner's instructions and take into account any uncertainty for power cables.
5. You are aware that there are inherent risks and dangers associated with carrying out work in the vicinity of underground facilities (such as **nbn**™ fibre optic, copper and coaxial cables, and power cable feed to **nbn**™ assets). Damage to underground electric cables may result in:
 - Injury from electric shock or severe burns, with the possibility of death.
 - Interruption of the electricity supply to wide areas of the city.
 - Damage to your excavating plant.
 - Responsibility for the cost of repairs.
6. You must take all reasonable precautions to avoid damaging **nbn**™ Facilities. These precautions may include but not limited to the following:
 - All excavation sites should be examined for underground cables by careful hand excavation. Cable cover slabs if present must not be disturbed. Hand excavation needs to be undertaken with extreme care to minimise the likelihood of damage to the cable, for example: the blades of hand equipment should be aligned parallel to the line of the cable rather than digging across the cable.
 - If any undisclosed underground cables are located, notify **nbn** immediately.
 - All personnel must be properly briefed, particularly those associated with the use of earth-moving equipment, trenching, boring and pneumatic equipment.
 - The safety of the public and other workers must be ensured.
 - All excavations must be undertaken in accordance with all relevant legislation and regulations.
7. You will be responsible for all damage to **nbn**™ Facilities that are connected whether directly, or indirectly with work you carry out (or work that is carried out for you or on your behalf) at the Location. This will include, without limitation, all losses expenses incurred by **nbn** as a result of any such damage.
8. You must immediately report any damage to the **nbn**™ network that you are/become aware of. Notification may be by telephone - 1800 626 329.
9. Except to the extent that liability may not be capable of lawful exclusion, **nbn** and its servants and agents and the related bodies corporate of **nbn** and their servants and agents shall be under no liability whatsoever to any person for any loss or damage (including indirect or consequential loss or damage) however caused (including, without limitation, breach of contract negligence and/or breach of statute) which may be suffered or incurred from or in connection with this information sheet or any plans (including Indicative Plans) attached hereto. Except as expressly provided to the contrary in this information sheet or the attached plans (including Indicative Plans), all terms, conditions, warranties, undertakings or representations (whether expressed or implied) are excluded to the fullest extent permitted by law.

All works undertaken shall be in accordance with all relevant legislations, acts and regulations applicable to the particular state or territory of the Location. The following table lists all relevant documents that shall be considered and adhered to.

State/Territory	Documents
National	Work Health and Safety Act 2011
	Work Health and Safety Regulations 2011
	Safe Work Australia - Working in the Vicinity of Overhead and Underground Electric Lines (Draft)

	Occupational Health and Safety Act 1991
NSW	Electricity Supply Act 1995
	Work Cover NSW - Work Near Underground Assets Guide
	Work Cover NSW - Excavation Work: Code of Practice
VIC	Electricity Safety Act 1998
	Electricity Safety (Network Asset) Regulations 1999
QLD	Electrical Safety Act 2002
	Code of Practice for Working Near Exposed Live Parts
SA	Electricity Act 1996
TAS	Tasmanian Electricity Supply Industry Act 1995
WA	Electricity Act 1945
	Electricity Regulations 1947
NT	Electricity Reform Act 2005
	Electricity Reform (Safety and Technical) Regulations 2005
ACT	Electricity Act 1971

Thank You,


nbn DBYD

Date: 07/02/2024

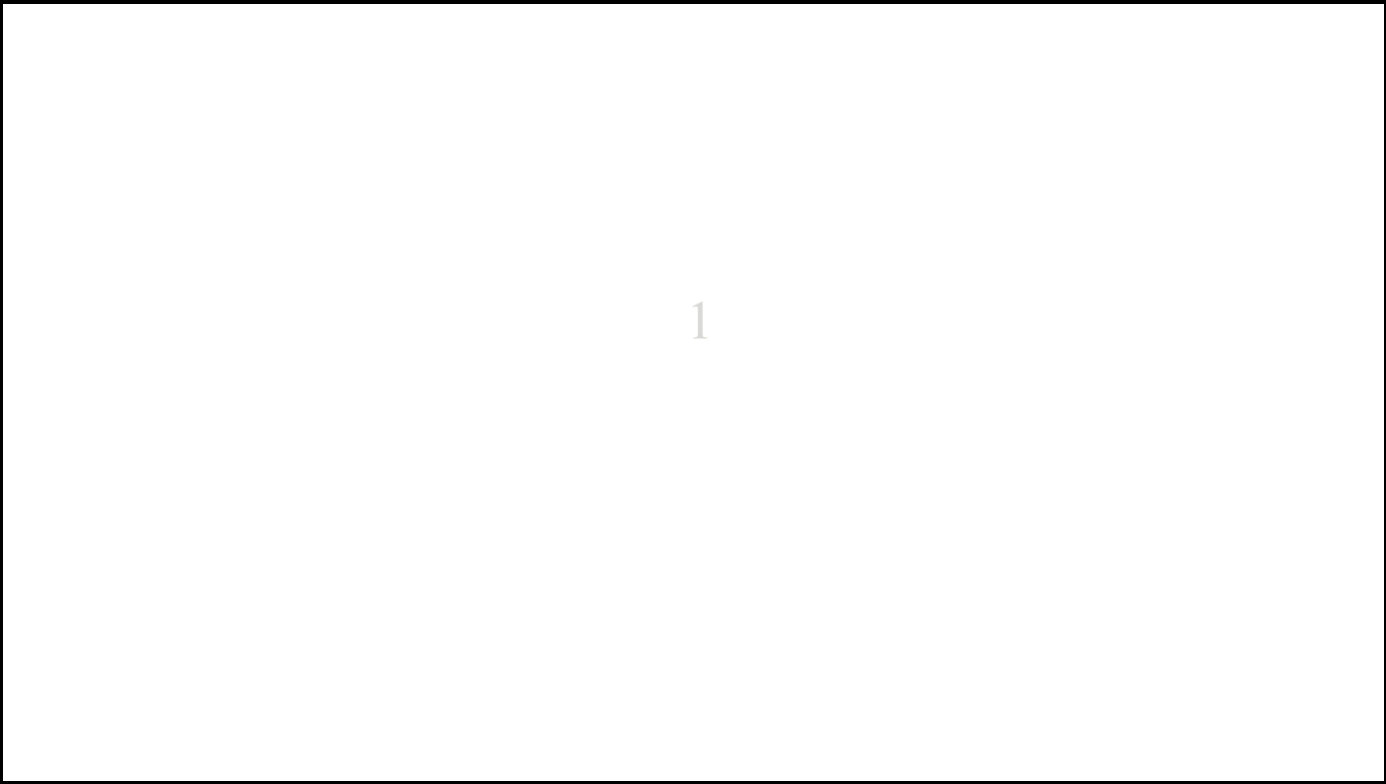
This document is provided for information purposes only. This document is subject to the information classification set out on this page. If no information classification has been included, this document must be treated as UNCLASSIFIED, SENSITIVE and must not be disclosed other than with the consent of nbn co. The recipient (including third parties) must make and rely on their own inquiries as to the currency, accuracy and completeness of the information contained herein and must not use this document other than with the consent of nbn co.

Copyright © 2021 nbn co Limited. All rights reserved.

To: Image Property
Phone: Not Supplied
Fax: Not Supplied
Email: sales.support@imageproperty.com.au

Dial before you dig Job #:	35989281	 DIAL BEFORE YOU DIG www.1100.com.au
Sequence #	235115688	
Issue Date:	07/02/2024	
Location:	17/1 Santa Ana Ln , Griffin , QLD , 4503	

Indicative Plans

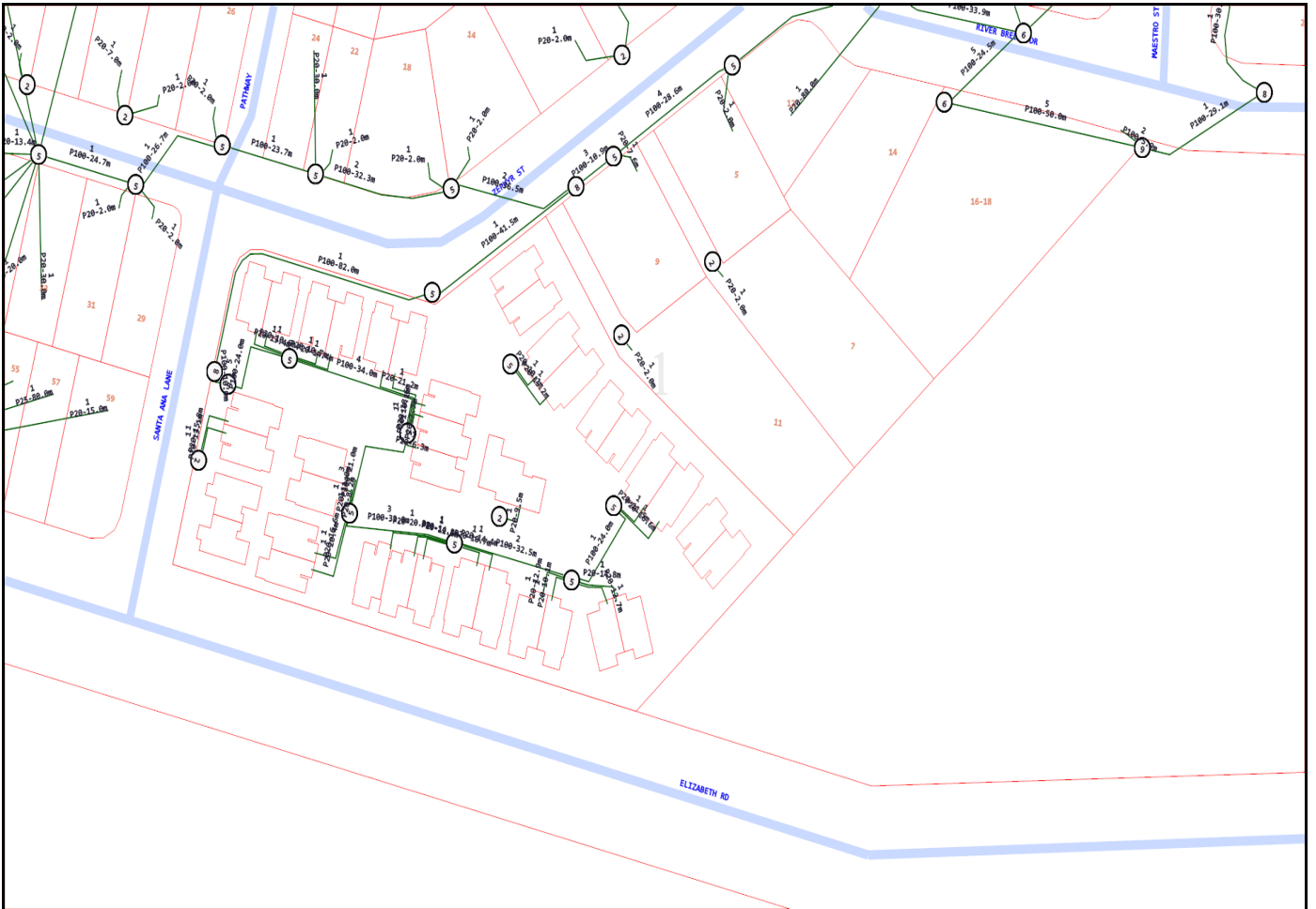




LEGEND



	Parcel and the location
	Pit with size "5"
	Power Pit with size "2E". Valid PIT Size: e.g. 2E, 5E, 6E, 8E, 9E, E, null.
	Manhole
	Pillar
	Cable count of trench is 2. One "Other size" PVC conduit (PO) owned by Telstra (-T-), between pits of sizes, "5" and "9" are 25.0m apart. One 40mm PVC conduit (P40) owned by NBN, between pits of sizes, "5" and "9" are 20.0m apart.
	2 Direct buried cables between pits of sizes, "5" and "9" are 10.0m apart.
	Trench containing any INSERVICE/CONSTRUCTED (Copper/RF/Fibre) cables.
	Trench containing only DESIGNED/PLANNED (Copper/RF/Fibre/Power) cables.
	Trench containing any INSERVICE/CONSTRUCTED (Power) cables.
	Road and the street name "Broadway ST"
Scale	0 20 40 60 Meters 1:2000 1 cm equals 20 m



Emergency Contacts

You must immediately report any damage to the **nbn™** network that you are/become aware of. Notification may be by telephone - 1800 626 329.



Working near **nbn**TM cables

nbn has partnered with Dial Before You Dig to give you a single point of contact to get information about **nbn** underground services owned by **nbn** and other utility/service providers in your area including communications, electricity, gas and other services. Contact with underground power cables and gas services can result in serious injury to the worker, and damage and costly repairs. You must familiarise yourself with all of the Referral Conditions (meaning the referral conditions referred to in the DBYD Notice provided by **nbn**).

Practice safe work habits

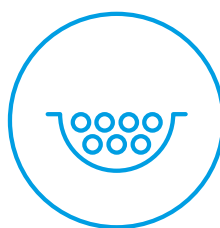
Once the DBYD plans are reviewed, the Five P's of Excavation should be adopted in conjunction with your safe work practices (which must be compliant with the relevant state Electrical Safety Act and Safe Work Australia "Excavation Work Code of Practice", as a minimum) to ensure the risk of any contact with underground **nbn** assets are minimised.



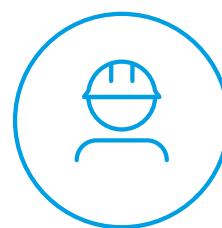
Plan: Plan your job by ensuring the plans received are current and apply to the work to be performed. Also check for any visual cues that may indicate the presence of services not covered in the DBYD plans.



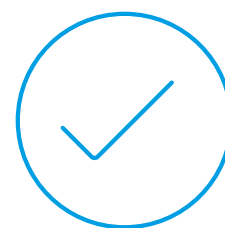
Prepare: Prepare for your job by engaging a DBYD Certified Plant Locator to help interpret plans and identify on-site assets. Contact **nbn** should you require further assistance.



Pothole: Non-destructive potholing (i.e. hand digging or hydro excavation) should be used to positively locate **nbn** underground assets with minimal risk of contact and service damage.

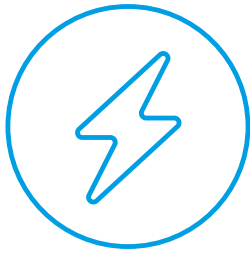


Protect: Protecting and supporting the exposed **nbn** underground asset is the responsibility of the worker. Exclusion zones for **nbn** assets are clearly stated in the plan and appropriate controls must be implemented to ensure that encroachment into the exclusion zone by machinery or activities with the potential to damage the asset is prevented.

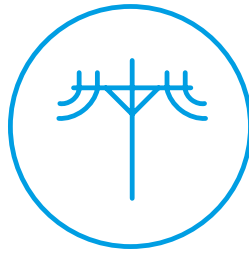


Proceed: Proceed only when the appropriate planning, preparation, potholing and protective measures are in place.

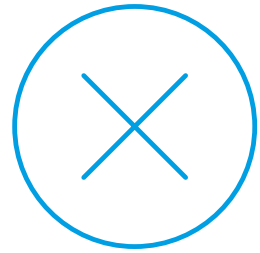
Working near **nbn**[™] cables



Identify all electrical hazards, assess the risks and establish control measures.



When using excavators and other machinery, also check the location of overhead power lines.



Workers and equipment must maintain safety exclusion zones around power lines.

Once all work is completed, the excavation should be re-instated with the same type of excavated material unless specified by **nbn**. Please note:

- Construction Partners of **nbn** may require additional controls to be in place when performing excavation activities.
- The information contained within this pamphlet must be used in conjunction with other material supplied as part of this request for information to adequately control the risk of potential asset damage.

Contact

All **nbn**[™] network facility damages must be reported online [here](#).
For enquiries related to your DBYD request please call 1800 626 329.

Disclaimer

This brochure is a guide only. It does not address all the matters you need to consider when working near our cables. You must familiarise yourself with other material provided (including the Referral Conditions) and make your own inquiries as appropriate.

nbn will not be liable or responsible for any loss, damage or costs incurred as a result of reliance on this brochure.

This document is provided for information purposes only. This document is subject to the information classification set out on this page. If no information classification has been included, this document must be treated as UNCLASSIFIED, SENSITIVE and must not be disclosed other than with the consent of nbn co. The recipient (including third parties) must make and rely on their own inquiries as to the currency, accuracy and completeness of the information contained herein and must not use this document other than with the consent of nbn co. Copyright © 2021 nbn co limited. All rights reserved.

