

PROPERTY

15 Manhattan Crescent
North Lakes QLD, 4509

PROPERTY STATUS

✔ **Currently Compliant**

TYPE OF VISIT

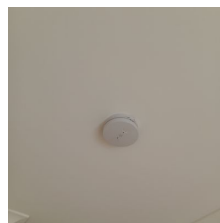
Change of Tenancy

INSPECTION DATE

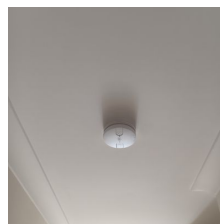
24/01/2024

SMOKE ALARMS SUMMARY:

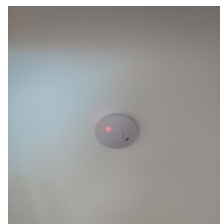
ALARM 1 - ENTRY
MAKE: DETECTOR INSPECTOR
MODEL: DI240I
POWER: 240vLi
TYPE: P/E Interconnected
EXPIRY: 2030
DB: 94



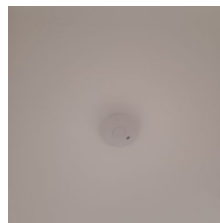
ALARM 2 - HALLWAY
MAKE: DETECTOR INSPECTOR
MODEL: DI240I
POWER: 240vLi
TYPE: P/E Interconnected
EXPIRY: 2030
DB: 98



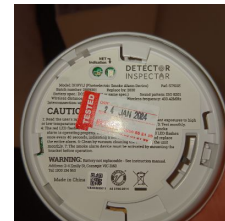
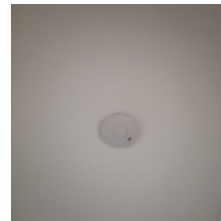
ALARM 3 - BED 1
MAKE: DETECTOR INSPECTOR
MODEL: DI10YLI
POWER: 3vLi
TYPE: P/E Interconnected
EXPIRY: 2030
DB: 96



ALARM 4 - BED 2
MAKE: DETECTOR INSPECTOR
MODEL: DI10YLI
POWER: 3vLi
TYPE: P/E Interconnected
EXPIRY: 2030
DB: 94



ALARM 5 - BED 3
MAKE: DETECTOR INSPECTOR
MODEL: DI10YLI
POWER: 3vLi
TYPE: P/E Interconnected
EXPIRY: 2030
DB: 95



All smoke alarms located within the property as detailed above have been cleaned and tested as per manufacturers instructions and been installed in accordance with Australian Standard AS 3786 (2014) Smoke Alarms, Building Code of Australia, Volume 2 Part 3.7.2 of the National Construction code series (BCA) and AS/NZS 3000:2018 Electrical installations.

* Not required for compliance

Where alarm Power is 240v or 240vLi the alarm is mains powered. (Hard Wired). All other alarms are battery powered.



SAFETY SWITCH TEST SUMMARY:

1 Safety Switches Present



New/Existing	Make	Model	Test Result
Existing	CLIPSAL	RCD440	Pass

All Safety Switches have been Mechanically Tested and pass a basic mechanical test, to assess they are in working order. No test has been performed to determine the speed at which the device activated.



CORDED WINDOWS SUMMARY:

NO CORDED BLINDS

All Corded Windows within the Property as detailed above are Compliant with Current Legislation and Australian Standards. The Required Clips and Tags have been installed to ensure proper compliance with Current Legislation. Further data is available on the agency portal

