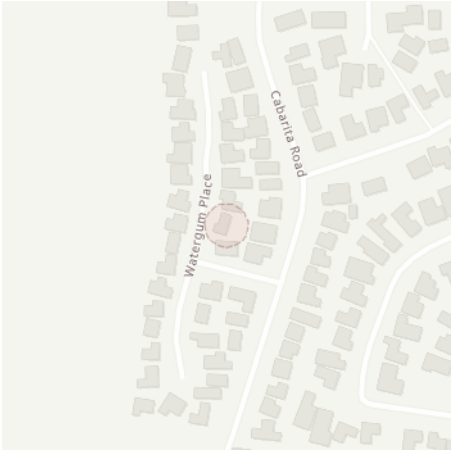


32 Watergum Place



[Review responses online](#) ↗



Received 4 of 4 responses  
**All responses received**  
  
32 Watergum Place, Bogangar NSW 2488  
  
Job dates  
30/06/2025 → 30/06/2025  
  
These plans expire on  
25 Jul 2025  
  
Lodged by  
Image Property

Authority	Status	Page
✉ BYDA Confirmation		2
🏠 Essential Energy	Received	4
🏠 NBN Co NswAct	Received	13
🏠 Telstra NSW North	Received	24
🏠 Tweed Shire Council	Received	33

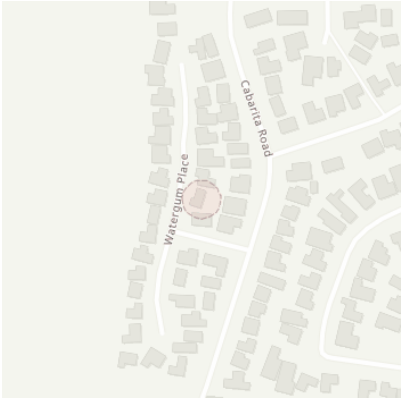
Contact Details

Contact	Contact number	Company	Enquirer ID
Image Property	(07) 3263 1811	Image property	3003158
Email		Address	
sales.support@imageproperty.com.au		57 Kirby Road Aspley QLD 4034	

Job Site and Enquiry Details

**WARNING:** The map below only displays the location of the proposed job site and does not display any asset owners' pipe or cables. The area highlighted has been used only to identify the participating asset owners, who will send information to you directly.

Enquiry date	Start date	End date	On behalf of	Job purpose	Locations	Onsite activities
27/06/2025	30/06/2025	30/06/2025	Private	Design	Both Road, Nature Strip, Footpath	Planning & Design



Check that the location of the job site is correct. If not, you must submit a new enquiry.

If the scope of works change or plan validity dates expire, you must submit a new enquiry.

Do NOT dig without plans. Safe excavation is your responsibility. If you don't understand the plans or how to proceed safely, please contact the relevant asset owners.

User Reference	Address	Notes/description
32 Watergum Place	32 Watergum Place Bogangar NSW 2488	-

Your Responsibility and Duty of Care

- **Lodging an enquiry does not authorise project commencement.** Before starting work, you must obtain all necessary information from all affected asset owners.
- If you don't receive plans within 2 business days, contact the asset owner & quote their sequence number.
- Always follow the 5Ps of Safe Excavation (page 2), and locate assets before commencing work.
- Ensure you comply with State legislative requirements for Duty of Care and safe digging.
- If you damage an underground asset, you MUST advise the asset owner immediately.
- By using the BYDA service, you agree to the [Privacy Policy](#) and [Term of Use](#).
- For more information on safe digging practices, visit [www.byda.com.au](http://www.byda.com.au)

Asset Owner Details

Below is a list of asset owners with underground infrastructure in and around your job site. It is your responsibility to identify the presence of these assets. Plans issued by Members are indicative only unless specified otherwise. Note: not all asset owners are registered with BYDA. You must contact asset owners not listed here directly.

Referral ID (Seq. no)	Authority Name	Phone	Status
257132186	Essential Energy	13 23 91	NOTIFIED
257132185	NBN Co NswAct	1800 687 626	NOTIFIED
257132188	Telstra NSW North	1800 653 935	NOTIFIED
257132187	Tweed Shire Council	(02) 6670 2460	NOTIFIED

END OF UTILITIES LIST



### Plan

Plan your job. Use the BYDA service at least one day before your job is due to begin, and ensure you have the correct plans and information required to carry out a safe project.



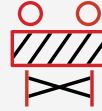
### Prepare

Prepare by communicating with asset owners if you need assistance. Look for clues onsite. Engage a skilled Locator.



### Pothole

Potholing is physically sighting the asset by hand digging or hydro vacuum extraction.



### Protect

Protecting and supporting the exposed infrastructure is the responsibility of the excavator. Always erect safety barriers in areas of risk and enforce exclusion zones.



### Proceed

Only proceed with your excavation work after planning, preparing, potholing (unless prohibited), and having protective measures in place.

## Engage a skilled Locator



When you lodge an enquiry you will see skilled Locators to contact

Visit the Certified Locator website directly and search for a locator near you

[certloc.com.au/locators](https://certloc.com.au/locators)

## Get FREE Quotes for Contractors & Equipment Fast



Use isseekplant's FREE marketplace to get quotes for the equipment or services you need on your project. Compare quotes from trusted local contractors and get your project done on time and in budget.

1. Fill out your job details in our FREE quick quote form.
2. We send the request to trusted local contractors.
3. The local contractors will contact you directly with quotes

GET QUOTE

Use isseekplant to find trusted contractors near you today, visit:  
[blog.isseekplant.com.au/byda-isp-get-quotes](https://blog.isseekplant.com.au/byda-isp-get-quotes)

## Book a FREE BYDA Session



BYDA offers free training sessions to suit you and your organisation's needs covering safe work practices when working near essential infrastructure assets. The free sessions are offered in two different formats - online and face-to-face.

To book a session, visit:  
[byda.com.au/contact/education-awareness-enquiry-form](https://byda.com.au/contact/education-awareness-enquiry-form)

BOOK NOW

Referral

257132186

Member Phone

13 23 91

Responses from this member

Response received Fri 27 Jun 2025 10.56am

File name	Page
Response Body	5
EW_ASSETS_FOUNDsafetyNotice.pdf	6
plot16106385962864745522.pdf	10
Coversheet_EW_ASSETS_FOUND.pdf	11

Asset Name: 50215

Date of enquiry: 27/06/2025 10:54:00 AM

Notification No: 50525147 (Job No)

Sequence No: 257132186

Customer's Name: Image Property

Customer's Phone No: +61732631811

Address supplied for dig site location

32 Watergum Place, Bogangar, NSW

You will require a PDF viewer such as Adobe Acrobat Reader to view the attached documents.

Adobe Acrobat Reader is freely available at <http://get.adobe.com/reader/>.

### When working near underground electrical infrastructure

NSW legislation requires people who are planning to do excavation work to obtain copies of underground electricity cable plans through Dial Before you Dig (Phone 1100) and to make sure that the plans are no more than 30 days old when excavation commences.

The aim of the legislation is to ensure that when workers dig or drive items near underground electricity cables, ducting, and pipes, they will establish the exact location of the cables and thus avoid coming into contact with them or damaging them. These items carry vital services such as electricity, water, gas and communications, and establishing their location before digging will help ensure worker safety and prevent damage to the network which may cause disruption of essential services to local communities.

#### Excavate safely and protect underground assets

Dial Before You Dig (DBYD) is the first step to excavating safely. You should use DBYD when you will be undertaking (but not restricted to) the following:

- > Any excavation using machinery digging deeper than 150mm. This includes but is not restricted to back hoes, excavators, borers & kangaroo hammers (ploughing or ripping activities)
- > Any excavation using hand tools deeper than 300mm which includes shovels, spades and crow bars
- > Any vertical or horizontal boring.

**Note:** The above examples are general and may not cover all situations in the regulations where a DBYD would be required e.g. driving metal posts in the ground.

Regardless of the size of your project you should lodge an enquiry with DBYD before commencing work. This applies to small tasks like backyard landscaping, driving items into the ground as well as heavy work such as directional boring or directional drilling. DBYD strive to respond to enquiries within two business days.

#### Dial Before You Dig

- > Phone 1100
- > Web [www.1100.com.au](http://www.1100.com.au)
- > Download the DBYD iPhone app



The Essential First Step

When a DBYD has been obtained, contact Essential Energy on **13 23 91** to identify any underground pipes and/or cables in the vicinity of excavation works to be carried out. Allow at least **two weeks or 10 working days advance notice** in your construction program to permit Essential Energy time to allocate the necessary field resources to carry out an onsite inspection if required. This service may incur a fee & should be stated at the time of making the appointment.

In the event the excavation does not commence within 28 days of receipt of a plan, a new plan should be obtained. The excavator **must** retain the plans on site for the duration of the excavation works.

#### Your responsibility

All individuals have a duty of care they must observe when working in the vicinity of underground cables, ducts and pipes. Be aware of the requirement set out in the latest WorkCover Codes of Practice 'Work near Underground Assets Guideline' and 'Work near Overhead Powerlines' which can be viewed at [www.workcover.nsw.gov.au](http://www.workcover.nsw.gov.au) or you can purchase a copy of the Code of Practice by contacting WorkCover on 1300 799 003.

You should also be familiar with Essential Energy's operational procedures 'Work near Essential Energy's underground assets' CEOP8041 and 'Construction work near electricity network' CEOP1116, which can be found at [essentialenergy.com.au/construction](http://essentialenergy.com.au/construction)

- > **Employers:** If you're an employer or employing someone to excavate, complete construction or drive items into the ground even at home you have a legal obligation to ensure their safety
- > **Excavators:** It is the excavator's responsibility to visually expose the underground pipes and cables manually before any construction begins.

**Note** – when excavating involving high pressure water or compressed air to break up the ground, which is then removed by a powerful vacuum unit to expose critical utilities after they have been electronically located to confirm identity, size, number of services and depth, checks should be carried out to ensure the pressure is acceptable for all cables and other assets which may be found prior to commencing pot holing by this method. Warning: CONSAC cables shouldn't be potholed by this method and must be de-energised before any work carried out near them. It's recommended to only use air/vacuum equipment to pot hole that operates at or less than 13,790Kpa (2000psi).

*Be safe, because they need you*



## No Go Zone for powered excavation

Extract from WorkCover "Work near Underground Assets"

**TABLE 1:** Types of assets and limits of underground approach

Assets	Clearances	No Go Zone for Powered Excavation	Controls	Typical Depths
Low voltage electricity cables – voltages less than or equal to 1000V (1kV)	Close proximity with the use of hand tools	300 mm	Must contact asset owner for specific conditions	450 – 750 mm
Electricity conductors from 11,000V (11kV) up to 33,000V (33 kV)	Close proximity with the use of hand tools	600 mm	Must contact asset owner for specific conditions	900 mm
Underground sub-transmission cables 33,000V up to 132,000V (132 kV)	Must contact asset owner	Must contact asset owner	Must be carried out under the supervision of the asset owner	900 mm
High Voltage Electricity cables – voltages from 1000V (1kV) up to (33 kV)	Close proximity with the use of hand tools	Must contact asset owner	Must contact asset owner for specific conditions	600 – 1000 mm
Extra High Voltage Electricity Transmission cables – voltages above (132 kV) and 330,000V (330 kV)	Must contact asset owner	Must contact asset owner	Work must be carried out under the supervision of the asset owner	800 – 1200 mm

### How to expose cables or pipes

Location plans provide an indication of the presence of underground assets only; they do not pinpoint the exact location. This is why manual exposure is required, which can be done by potholing. Underground assets must first be exposed by pot-holing with non-conductive tools to identify their location. Excavation with hand tools shall be carried out carefully up to, but not closer than, the minimum distances specified in Table 1. Several potholes may need to be dug manually to determine and satisfy yourself of the exact locations of cables or pipes to avoid any mishaps. Manual pot-holing needs to be undertaken with extreme care, common sense and while employing techniques least likely to damage cables. For example, orientate shovel blades and trowels parallel to the cable rather than digging across the cable. Look out for sand, plastic strips or specially marked bricks when excavating, which signal the presence of underground cables.

Only once all underground assets have been located, marked and protected against damage can the excavation proceed with caution.

### No Go Zone for powered excavation

Directional boring is powered excavation and contact with the asset owner must be made before excavation takes place. For directional boring across the line of an asset a minimum clearance of **300 mm** from the asset shall be maintained. When boring across the line of an underground asset, the location of the asset/s shall be positively proven by hand digging (pot-holing) or by another approved method and a safety observer appointed.

Note: Where the risk assessment identifies a potential risk of making contact with either underground assets, safety observer/s would be required. The safety observer's

responsibility is to ensure that approach distances from underground and overhead assets are maintained.

For boring under electricity cables, the only true way of knowing where the directional drill is, is to "see" it. It is necessary to excavate a slit trench at right angles to the approaching drill and 500mm deeper than the asset being protected and beside the cables to confirm the depth of the cables and ensure the drill is not within the minimum approach distance of the cable (specified in Table 1).

For directional boring parallel to the asset and at the level of the asset, a clearance of **500 mm** shall be maintained from the edge of the nearest asset and pot holed at 10m intervals to ensure clearances are maintained with a safety observer appointed.

### The four Ps of safe excavation

- 1. Plan** – Plan your job. Use the Dial Before You Dig service before your job is due to begin to help keep your project safe. Contact Essential Energy on 13 23 91 to identify any underground pipes and/or cables in the vicinity
- 2. Pothole** – Potholing (digging by hand) is a method to assist in establishing the exact location of all underground infrastructure. Only use air/vacuum equipment to pot hole that operates at or less than 13,790Kpa (2000psi)
- 3. Protect - Protecting and supporting exposed infrastructure is the excavator's responsibility.** Always erect safety barriers in areas at risk to protect underground networks
- 4. Proceed** – But ONLY when you have planned, potholed and put the protective measures in place.

*Be safe, because they need you*





## Digging safely

You cannot be too careful when it comes to safe excavation. Avoiding underground ducting pipe and cable damage is as simple as having the right tools, the right skills and the right information.

- > Study the plans you receive from asset owners thoroughly
- > Check to see if they relate to the area you requested and make sure you understand them. If you are unclear about what the symbols mean or how to proceed, contact the relevant network owner
- > Check the work area for other forms of electrical equipment, including street lights, ground substations, phone boxes or traffic lights – all good indicators that underground cables will be present
- > Remember underground cables can also be present even if overhead powerlines have been identified
- > Never assume the depth or alignment of pipes and cables. Installed networks assets may not have been installed in a straight line
- > Always observe any instructions stated on the plans provided by the asset owner
- > Remember, plans and maps identifying the location of underground cables and depths can alter after road upgrades or developments and underground assets may be as little as a few millimetres below the surface
- > Other service lines (for example gas mains (pipes) and communication cables) can also be present. Shared trenches are frequently used on underground runs to premises
- > New electrical cables are sometimes laid using existing old conduits
- > Various methods of protecting underground cables may be utilised (for example electrical bricks, conduits, concrete or flat PVC barriers) or may be direct buried or installed by under-boring methods which may have no visual disturbance of the ground
- > Ensure overhead & electrical structures aren't undermined during excavation.

## Earth cables

Earth cables are an important part of all electrical installations and have two main purposes:

- > To safeguard against the possibility of danger to life
- > To maintain the good working order of the electrical network.

They can have potentially dangerous electrical current flowing through them. Usually they have a green and yellow covering but could be a bare cable buried directly in the ground.

Even if the map provided does not show underground cables, earth cables may be present. These earth cables are usually associated with electrical equipment located

on the pole such as transformers, switching equipment, permanent earthing points or Padmount / kiosk subs.

It's recommended that if any excavation is to take place within **10m** of a power pole with a cable running down it into the ground, contact is made with Essential Energy on **13 23 91** to have the earthing system located. While an effort is made to install the earthing under the powerline and guy if installed, sometimes circumstances may require a variation to this, so do not assume where they are installed. The distance and configuration that the earthing cable is installed varies due to the soil conditions and system type (e.g. Single wire earth return (SWER)).

Additional earthing electrodes stakes may be installed to ensure the required earthing reading is obtained.

### WARNING:SWER installations

- > Contacting SWER earthing can be deadly
- > Voltage is present on SWER transformer earthing systems either at 12.7 kV or 19.1kV
- > NO excavation is allowed within 10 metres of a SWER transformer pole.

## Excavating around electrical poles

Anyone intending to excavate around any electrical item risks serious injury or death as a result of contact with underground cables or the earthing system.

## Assets around poles

For excavation depths greater than 250mm near power poles and stays you must arrange for an Essential Energy representative to attend the worksite 2 weeks prior to work commencing. Call Essential Energy on **13 23 91**. More information is available in Essential Energy's operational procedure, 'Work near Essential Energy's underground assets: CEOP8041' which can be found at [essentialenergy.com.au/construction](http://essentialenergy.com.au/construction)

Unless otherwise agreed, underground assets and other obstructions around poles are to be kept a minimum distance of 300mm from the periphery of the pole, to allow inspections by the asset owner employees.

No excavation within 10 metres of a SWER transformer pole is to occur without the approval of the local electricity asset owner. It should be noted that the NSW Service and Installation Rules require a sketch of the underground service/consumers mains to be marked inside the switchboard.

The risks are higher for those earthing systems of the SWER constructions as the earthing is utilised as the return path.

*Be safe, because they need you*





Typically any electrical item installed on a pole will have an earth wire running down the pole into the ground, which includes:

- > Transformers in urban and rural situations
- > Isolation, protection and regulation items.

Transformers located on the ground (padmount and kiosk), besides having underground electrical cables, will have an earthing system installed around them.

### Damaged earthing

If an earth cable has been damaged, maintain a clearance of eight (8) meters and contact Essential Energy on **13 23 91**. **DONT ATTEMPT** to re-join the cable - this will place you at serious risk.

### Operating near underground cables and earths

- > Underground cables should never be moved or relocated unless under the express authority of the organisation or person responsible for the powerlines
- > The excavator shall report all damage made to Essential Energy assets immediately. Damage includes: gouges, dents, holes and gas escapes
- > Never undermine poles, cables, earthing cable, pad-mount and kiosk substations.



Above: Poles with become unstable if undermined

### Make sure it can't go wrong

You should ensure that people at work, their equipment (tools and plant) or materials do not come within close proximity to underground powerlines unless:

- > A written risk assessment has been completed and a safe system of work implemented
- > The relevant safety precautions and worker training requirements, including WorkCover Codes of Practice and Essential Energy's requirements, have been implemented and complied with.

If working in close proximity to underground cables is unavoidable and the risk assessment has been completed, the following should be considered to control the risks and ensure work safety:

- > Have the power switched off by Essential Energy
- > Consider all conductors as live unless it is positively known they have been de-energised
- > Where appropriate, provide ground markings to identify location and warn workers of the presence of underground power and other assets.

### Emergency situations

In the event that contact with an underground powerline occurs or cables are exposed or damaged, remembering the following points could help save a life:

- > If the situation is at all life threatening, immediately contact the Emergency Services on 000 (triple zero)
- > Call Essential Energy's 24-hour supply interruptions line – **13 20 80** to switch off the power if required or report damage or exposure cables / conduits
- > If any other underground assets are damaged you should contact the affected asset owners immediately
- > Treat underground cables as alive, even if they appear to be dead
- > Keep everyone at least eight metres away from the incident site, the person or any machinery making contact with underground cable
- > Don't panic or touch the person receiving the electric shock – this could place you at risk
- > Untrained, unequipped persons should not attempt to rescue a person receiving an electric shock. All too often secondary deaths occur when others go to the aid of earlier victims
- > Remain on/inside the machinery until the supply is disconnected
- > If possible, break contact between the machinery and underground cable.



### For more information

Essential Energy's Public Safety team is available to facilitate Electrical Awareness sessions and discuss any questions relating to electrical safety. For more information on electrical safety please call

- > Essential Energy General Enquiries 13 23 91
- > Essential Energy Supply Interruptions 13 20 80
- > WorkCover NSW 13 10 50
- > Dial Before You Dig [www.1100.com.au](http://www.1100.com.au) 1100

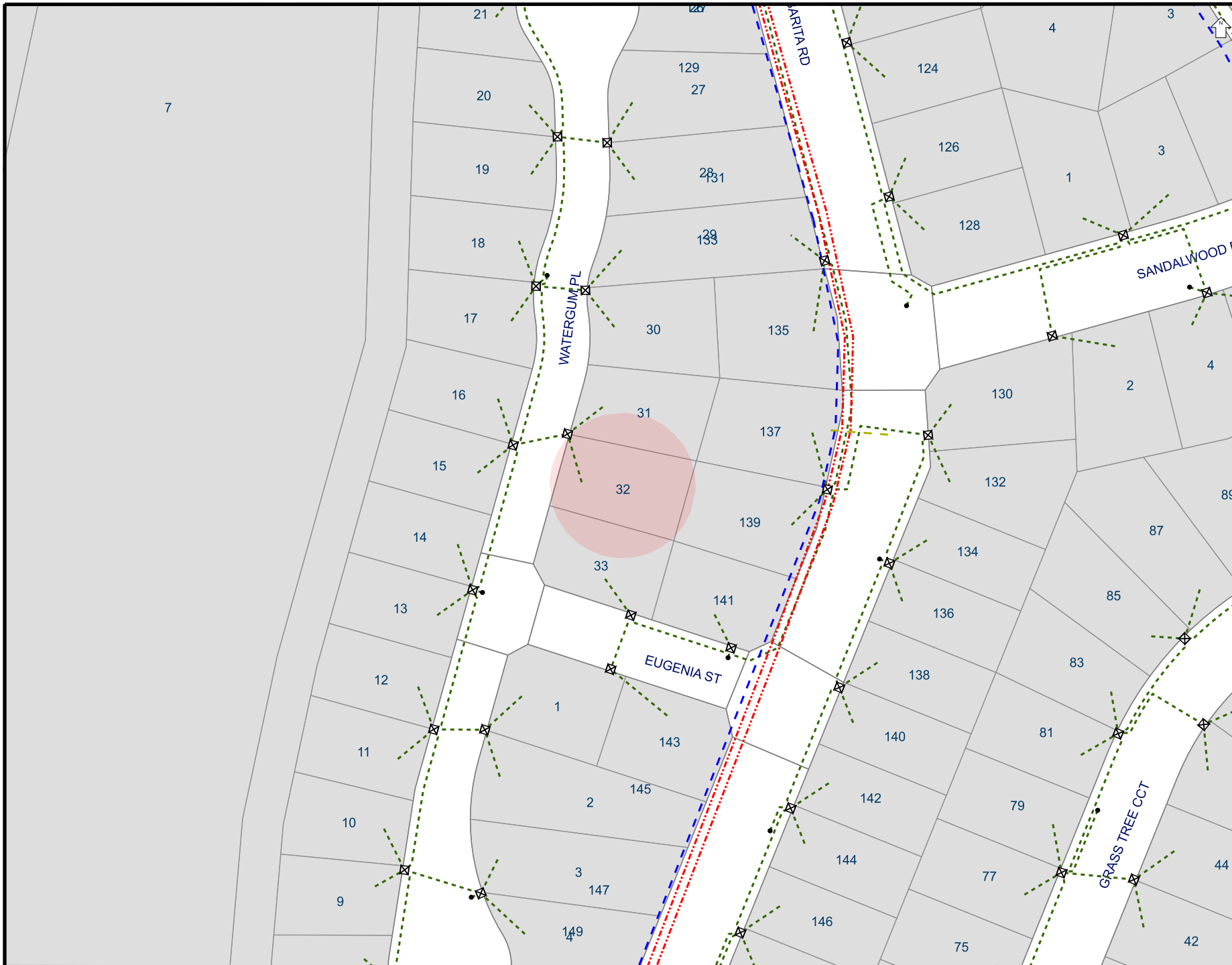
- > Follow us  
- > or visit [essentialenergy.com.au/safety](http://essentialenergy.com.au/safety)

### Safety first: Before you dig or drive items into the ground

1. Contact DBYD
2. DO NOT attempt to excavate within 10m of any power pole or electrical item
3. Contact Essential Energy on 13 23 91 for assistance to locate cables and earthing
4. Locate asset: Pot-hole
5. Proceed only if you have satisfied yourself it is safe.

*Be safe, because they need you*





Overhead wires not shown  
LOOK UP & LIVE!

### LEGEND

- LV Underground Cable
- HV Underground Cable
- Underground Pipe
- ★ Underground Earth or Wires
- ▲ Ground Substation
- Pole
- ⊠ Cubicle
- Pit
- Area of Interest

### Critical Assets

Contact Essential Energy  
on 13 23 91

- Zone Substation
- Underground Cable
- Underground Fibre

### Proposed Works

- Area of proposed works

Proposed assets are shown as  
orange symbols

THE INFORMATION ON THIS  
MAP MAY NOT BE  
ACCURATE.  
If details are  
incorrect, please  
notify  
Essential Energy on  
13 23 91  
(or fax 1800 354 636)

ISSUE DATE: 27/06/2025

You must resubmit your  
request if you have not  
started work within 4 weeks  
of the 'Issue Date' above

A4 SCALE: 1:1241





**CABLE/PIPE LOCATION**  
**Assets were found in the search area**

<b>COMPANY NAME:</b>	Image property
<b>ATTENTION:</b>	Image Property
<b>SEARCH LOCATION:</b>	32 Watergum Place Bogangar NSW 2488
<b>SEQUENCE NO:</b>	257132186
<b>DATE:</b>	Friday, 27 June 2025

**Provision of Plans:**

Please find enclosed plans depicting approximate locations of **Essential Energy** assets in the search location. **The excavator must not assume that there may not be assets owned by other network operators in the search location.**

Underground assets searched for	Underground assets found
Essential Energy Electrical	<input checked="" type="checkbox"/>
Essential Energy Water & Sewerage	<input type="checkbox"/>

Plans are updated from time to time to record changes to underground assets and may be updated by Essential Energy without notice. In the event that excavation does not commence within 28 days of receipt of a plan, a new plan should be obtained.

The excavator must retain the plans on site for the duration of the works.

The excavator shall report all damage made to Essential Energy assets immediately. Note that damage includes gouges, dents, holes and gas escapes.

**IN CASE OF EMERGENCY OR TO REPORT DAMAGE:**  
**PHONE 13 20 80**

**DISCLAIMER**

Please be aware that plans may **not** reflect alterations to surface levels or the position of roads, buildings, fences etc. **Cable and pipe locations are approximate**, and the plans are **not** suitable for scaling purposes. *Essential Energy does not retain plans for privately-owned underground electrical or water & sewerage assets located on private property. Privately-owned underground electrical assets located on private property are the responsibility of the owner.*

The plans have been prepared for Essential Energy's sole use and benefit. **Essential Energy cannot and does not warrant the accuracy or completeness of the plans.** Essential Energy supplies them at no cost with the object of reducing the serious risk of unintentional damage being caused to its cables and pipes. **Essential Energy does not accept any responsibility for any omissions, inaccuracies or errors in the plans, or any reliance place on the material. Any reliance placed on any plan provided in response to your request is at your own risk.**

Essential Energy retains all intellectual and industrial property rights which exists or may exist in or with respect to the plan(s). The material provided is not to be copied or distributed beyond you.

You release Essential Energy from and against all claims, demands, actions and proceedings arising out of or in any way related to the use of the provided material.

**Location of Assets on Site:**

The plans indicate only that cables and pipes may exist in the general vicinity – they do not pinpoint the exact location of the cables and pipes.

If it is found that the location of cables or pipes on the plans can be improved, please notify Essential Energy on 13 23 91.

All individuals have a duty of care they must observe when working in the vicinity of underground cables and pipes. It is the **excavator's responsibility to visually expose the underground cables and pipes manually, ie. by using hand-held tools and non-destructive pot-holing techniques prior to any mechanical excavation.** The excavator will be held responsible for all damage caused to the Essential Energy network or cables and pipes, and for the costs associated with the repair of any such damage. The excavator will also be held responsible for all damage caused to any persons.

When digging in the vicinity of underground assets, persons should observe the requirements of the applicable Codes of Practice published by the NSW Work Cover Authority or Safe Work Australia, and any amendments from time to time by the Authorities, including although not limited to:

- Excavation Work
- Managing Electrical Risks in the workplace
- How to manage and control asbestos in the workplace

(Please refer to <https://www.nsw.gov.au/search?q=codes+of+practice>)

When digging in the vicinity of **electrical assets** persons should observe the requirements of the **Electricity Supply Act 1995.**

Persons excavating near live underground electrical reticulation and/or earthing cables **must exercise extreme caution at all times and adhere to the requirements of Essential Energy's Electrical Safety Rules.** (These are available on our website: <http://www.essentialenergy.com.au/content/safety-community> and include:

- [Company Procedure: Work Near Essential Energy's Underground Assets](#)
- [Asbestos Fact Sheet](#)

In some situations, these procedures call for work to be performed by authorised staff.

Should there be any doubt as to the exact location of any underground electrical assets, and the potential for conflict with live underground cables caused by excavation at your work site, you should contact

**13 23 91** to arrange for an on-site visit by an Essential Energy representative. No construction or mechanical excavation work is to commence prior to this on-site visit and approval being obtained.

When digging in the vicinity of **water or sewer assets** persons should observe the requirements of the **Water Management Act 2000.**

Should there be any doubt as to the exact location of any underground water and sewer assets, and the potential for conflict with underground water and sewer pipes caused by excavation at your work site, you should contact **13 23 91** to arrange for an on-site visit. No construction or excavation work is to commence prior to this on-site visit and approval being obtained.

**Prior Notification:**

Please note that for excavation depths greater than 250mm near power poles and stays you should allow for **advance notice** in your construction program to permit Essential Energy time to allocate the necessary field resources to carry out the inspection at the site a **minimum of fourteen (14) working days prior to work commencing.**

**For further information please call 13 23 91.**

Referral

257132185

Member Phone

1800 687 626

Responses from this member

Response received Fri 27 Jun 2025 10.59am

File name	Page
Response Body	14
257132185_20250627_005852313438_1.pdf	15
4678_NBN_Dial_Before_You_Dig_Poster_20170517.pdf	18
Disclaimer_257132185_20250627_005852313438.pdf	20

Hi Image Property,

Please find attached the response to your DBYD referral for the address mentioned in the subject line. The location shown in our DBYD response is assumed based off the information you have provided. If the location shown is different to the location of the excavation then this response will consequently be rendered invalid.

Take the time to read the response carefully and note that this information is only valid for 28 days after the date of issue.

If you have any further enquiries, please do not hesitate to contact us.


Regards,  
Network Services and Operations  
NBN Co Limited  
P: 1800626329  
E: [dbyd@nbnco.com.au](mailto:dbyd@nbnco.com.au)  
[www.nbnco.com.au](http://www.nbnco.com.au)

**Confidentiality and Privilege Notice**

This e-mail is intended only to be read or used by the addressee. It is confidential and may contain legally privileged information. If you are not the addressee indicated in this message (or responsible for delivery of the message to such person), you may not copy or deliver this message to anyone, and you should destroy this message and kindly notify the sender by reply e-mail. Confidentiality and legal privilege are not waived or lost by reason of mistaken delivery to you. Any views expressed in this message are those of the individual sender, except where the sender specifically states them to be the views of NBN Co Limited

Please Do Not Reply To This Mail

**To:** Image Property  
**Phone:** Not Supplied  
**Fax:** Not Supplied  
**Email:** sales.support@imageproperty.com.au

<b>Dial before you dig Job #:</b>	50525147	
<b>Sequence #</b>	257132185	
<b>Issue Date:</b>	27/06/2025	
<b>Location:</b>	32 Watergum Place , Bogangar , NSW , 2488	

**Indicative Plans are tiled below to demonstrate how to layout and read nbn asset plans**





## LEGEND



	Parcel and the location
	Pit with size "5"
	Power Pit with size "2E". Valid PIT Size: e.g. 2E, 5E, 6E, 8E, 9E, E, null.
	Manhole
	Pillar
	Cable count of trench is 2. One "Other size" PVC conduit (PO) owned by Telstra (-T-), between pits of sizes, "5" and "9" are 25.0m apart. One 40mm PVC conduit (P40) owned by NBN, between pits of sizes, "5" and "9" are 20.0m apart.
	2 Direct buried cables between pits of sizes, "5" and "9" are 10.0m apart.
	Trench containing any <b>INSERVICE/CONSTRUCTED</b> (Copper/RF/Fibre) cables.
	Trench containing only <b>DESIGNED/PLANNED</b> (Copper/RF/Fibre/Power) cables.
	Trench containing any <b>INSERVICE/CONSTRUCTED</b> (Power) cables.
	Road and the street name "Broadway ST"
Scale	0 20 40 60 Meters 1:2000  1 cm equals 20 m





# Working near **nbn**<sup>TM</sup> cables

**nbn** has partnered with Dial Before You Dig to give you a single point of contact to get information about **nbn** underground services owned by **nbn** and other utility/service providers in your area including communications, electricity, gas and other services. Contact with underground power cables and gas services can result in serious injury to the worker, and damage and costly repairs. You must familiarise yourself with all of the Referral Conditions (meaning the referral conditions referred to in the DBYD Notice provided by **nbn**).

## Practice safe work habits

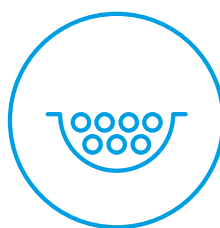
Once the DBYD plans are reviewed, the Five P's of Excavation should be adopted in conjunction with your safe work practices (which must be compliant with the relevant state Electrical Safety Act and Safe Work Australia "Excavation Work Code of Practice", as a minimum) to ensure the risk of any contact with underground **nbn** assets are minimised.



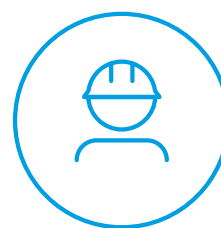
**Plan:** Plan your job by ensuring the plans received are current and apply to the work to be performed. Also check for any visual cues that may indicate the presence of services not covered in the DBYD plans.



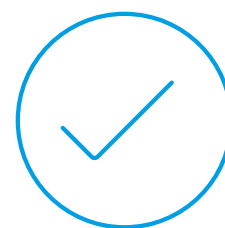
**Prepare:** Prepare for your job by engaging a DBYD Certified Plant Locator to help interpret plans and identify on-site assets. Contact **nbn** should you require further assistance.



**Pothole:** Non-destructive potholing (i.e. hand digging or hydro excavation) should be used to positively locate **nbn** underground assets with minimal risk of contact and service damage.



**Protect:** Protecting and supporting the exposed **nbn** underground asset is the responsibility of the worker. Exclusion zones for **nbn** assets are clearly stated in the plan and appropriate controls must be implemented to ensure that encroachment into the exclusion zone by machinery or activities with the potential to damage the asset is prevented.



**Proceed:** Proceed only when the appropriate planning, preparation, potholing and protective measures are in place.



# Working near **nbn**<sup>™</sup> cables



Identify all electrical hazards, assess the risks and establish control measures.



When using excavators and other machinery, also check the location of overhead power lines.



Workers and equipment must maintain safety exclusion zones around power lines.

Once all work is completed, the excavation should be re-instated with the same type of excavated material unless specified by **nbn**. Please note:

- Construction Partners of **nbn** may require additional controls to be in place when performing excavation activities.
- The information contained within this pamphlet must be used in conjunction with other material supplied as part of this request for information to adequately control the risk of potential asset damage.

## Contact

All **nbn**<sup>™</sup> network facility damages must be reported online [here](#).  
For enquiries related to your DBYD request please call 1800 626 329.

### Disclaimer


This brochure is a guide only. It does not address all the matters you need to consider when working near our cables. You must familiarise yourself with other material provided (including the Referral Conditions) and make your own inquiries as appropriate.

**nbn** will not be liable or responsible for any loss, damage or costs incurred as a result of reliance on this brochure.

This document is provided for information purposes only. This document is subject to the information classification set out on this page. If no information classification has been included, this document must be treated as UNCLASSIFIED, SENSITIVE and must not be disclosed other than with the consent of nbn co. The recipient (including third parties) must make and rely on their own inquiries as to the currency, accuracy and completeness of the information contained herein and must not use this document other than with the consent of nbn co. Copyright © 2021 nbn co limited. All rights reserved.



**To:** Image Property  
**Phone:** Not Supplied  
**Fax:** Not Supplied  
**Email:** sales.support@imageproperty.com.au

<b>Before You Dig Australia Job #:</b>	50525147	 <b>BEFORE YOU DIG</b> www.byda.com.au Zero Damage - Zero Harm
<b>Sequence #</b>	257132185	
<b>Issue Date:</b>	27/06/2025	
<b>Location:</b>	32 Watergum Place , Bogangar , NSW , 2488	

## Information

The area of interest requested by you contains one or more assets.

<b>nbn™ Assets</b>	<b>Search Results</b>
<b>Communications</b>	Asset identified
<b>Electricity</b>	No assets

In this notice **nbn™ Facilities** means *underground fibre optic, telecommunications and/or power facilities, including but not limited to cables, owned and controlled by nbn™*

## Location of nbn™ Underground Assets

We thank you for your enquiry. In relation to your enquiry at the above address:

- **nbn's** records indicate that there **ARE nbn™** Facilities in the vicinity of the location identified above ("Location").
- **nbn** indicative plan/s are attached with this notice ("Indicative Plans").
- The Indicative Plan/s show general depth and alignment information only and are not an exact, scale or accurate depiction of the location, depth and alignment of **nbn™** Facilities shown on the Plan/s.
- In particular, the fact that the Indicative Plans show that a facility is installed in a straight line, or at uniform depth along its length cannot be relied upon as evidence that the facility is, in fact, installed in a straight line or at uniform depth.
- You should read the Indicative Plans in conjunction with this notice and in particular, the notes below.
- You should note that, at the present time, the Indicative Plans are likely to be more accurate in showing location of fibre optics and telecommunications cables than power cables. There may be a variation between the line depicted on the Indicative Plans and the location of any power cables. As such, consistent with the notes below, particular care must be taken by you to make your own enquiries and investigations to precisely locate any power cables and manage the risk arising from such cables accordingly.
- The information contained in the Indicative Plan/s is valid for 28 days from the date of issue set out above. You are expected to make your own inquiries and perform your own investigations (including engaging appropriately qualified plant locators, e.g BYDA Certified Locators, at your cost to locate **nbn™** Facilities during any activities you carry out on site).

We thank you for your enquiry and appreciate your continued use of the Before You Dig Australia Service. For any enquiries related to moving assets or Planning and Design activities, please visit the **nbn Commercial Works** website to complete the online application form. If you are planning to excavate and require further information, please email [dbyd@nbnco.com.au](mailto:dbyd@nbnco.com.au) or call 1800 626 329.

#### Notes:

1. You are now aware that there are **nbn™** Facilities in the vicinity of the above property that could be damaged as a result activities carried out (or proposed to be carried out) by you in the vicinity of the Location.
2. You should have regard to section 474.6 and 474.7 of the *Criminal Code Act 1995* (CoA) which deals with the consequences of interfering or tampering with a telecommunications facility. Only persons authorised by **nbn** can interact with **nbn's** network facilities.
3. Any information provided is valid only for **28 days** from the date of issue set out above.

## Referral Conditions

The following are conditions on which **nbn** provides you with the Indicative Plans. By accepting the plans, you are agreeing to these conditions. These conditions are in addition, and not in replacement of, any duties and obligations you have under applicable law.

1. **nbn** does not accept any responsibility for any inaccuracies of its plans including the Indicative Plans. You are expected to make your own inquiries and perform your own investigations (including engaging appropriately qualified plant locators, e.g BYDA Certified Locators, at your cost to locate **nbn™** Facilities during any activities you carry out on site).
2. You acknowledge that **nbn** has specifically notified you above that the Indicative Plans are likely to be more accurate in showing location of fibre optics and telecommunications cables than power cables. There may be a variation between the line depicted on the Indicative Plans and the location of any power cables.
3. You should not assume that **nbn™** Facilities follow straight lines or are installed at uniform depths

along their lengths, even if they are indicated on plans provided to you. Careful onsite investigations are essential to locate the exact position of cables.

4. In carrying out any works in the vicinity of **nbn**™ Facilities, you must maintain the following minimum clearances:
  - 300mm when laying assets inline, horizontally or vertically.
  - 500mm when operating vibrating equipment, for example: jackhammers or vibrating plates.
  - 1000mm when operating mechanical excavators.
  - Adherence to clearances as directed by other asset owner's instructions and take into account any uncertainty for power cables.
5. You are aware that there are inherent risks and dangers associated with carrying out work in the vicinity of underground facilities (such as **nbn**™ fibre optic, copper and coaxial cables, and power cable feed to **nbn**™ assets). Damage to underground electric cables may result in:
  - Injury from electric shock or severe burns, with the possibility of death.
  - Interruption of the electricity supply to wide areas of the city.
  - Damage to your excavating plant.
  - Responsibility for the cost of repairs.
6. You must take all reasonable precautions to avoid damaging **nbn**™ Facilities. These precautions may include but not limited to the following:
  - All excavation sites should be examined for underground cables by careful hand excavation. Cable cover slabs if present must not be disturbed. Hand excavation needs to be undertaken with extreme care to minimise the likelihood of damage to the cable, for example: the blades of hand equipment should be aligned parallel to the line of the cable rather than digging across the cable.
  - If any undisclosed underground cables are located, notify **nbn** immediately.
  - All personnel must be properly briefed, particularly those associated with the use of earth-moving equipment, trenching, boring and pneumatic equipment.
  - The safety of the public and other workers must be ensured.
  - All excavations must be undertaken in accordance with all relevant legislation and regulations.
7. You will be responsible for all damage to **nbn**™ Facilities that are connected whether directly, or indirectly with work you carry out (or work that is carried out for you or on your behalf) at the Location. This will include, without limitation, all losses expenses incurred by **nbn** as a result of any such damage.
8. You must immediately report any damage to the **nbn**™ network that you are/become aware of. Notification may be by telephone - 1800 626 329.
9. Except to the extent that liability may not be capable of lawful exclusion, **nbn** and its servants and agents and the related bodies corporate of **nbn** and their servants and agents shall be under no liability whatsoever to any person for any loss or damage (including indirect or consequential loss or damage) however caused (including, without limitation, breach of contract negligence and/or breach of statute) which may be suffered or incurred from or in connection with this information sheet or any plans (including Indicative Plans) attached hereto. Except as expressly provided to the contrary in this information sheet or the attached plans (including Indicative Plans), all terms, conditions, warranties, undertakings or representations (whether expressed or implied) are excluded to the fullest extent permitted by law.

All works undertaken shall be in accordance with all relevant legislations, acts and regulations applicable to the particular state or territory of the Location. The following table lists all relevant documents that shall be considered and adhered to.

State/Territory	Documents
National	Work Health and Safety Act 2011
	Work Health and Safety Regulations 2011
	Safe Work Australia - Working in the Vicinity of Overhead and Underground Electric Lines (Draft)



	Occupational Health and Safety Act 1991
<b>NSW</b>	Electricity Supply Act 1995
	Work Cover NSW - Work Near Underground Assets Guide
	Work Cover NSW - Excavation Work: Code of Practice
<b>VIC</b>	Electricity Safety Act 1998
	Electricity Safety (Network Asset) Regulations 1999
<b>QLD</b>	Electrical Safety Act 2002
	Code of Practice for Working Near Exposed Live Parts
<b>SA</b>	Electricity Act 1996
<b>TAS</b>	Tasmanian Electricity Supply Industry Act 1995
<b>WA</b>	Electricity Act 1945
	Electricity Regulations 1947
<b>NT</b>	Electricity Reform Act 2005
	Electricity Reform (Safety and Technical) Regulations 2005
<b>ACT</b>	Electricity Act 1971

Thank You,

**nbn BYDA**

Date: 27/06/2025

This document is provided for information purposes only. This document is subject to the information classification set out on this page. If no information classification has been included, this document must be treated as UNCLASSIFIED, SENSITIVE and must not be disclosed other than with the consent of nbn co. The recipient (including third parties) must make and rely on their own inquiries as to the currency, accuracy and completeness of the information contained herein and must not use this document other than with the consent of nbn co.

Copyright © 2021 nbn co Limited. All rights reserved.

Referral

257132188

Member Phone

1800 653 935

Responses from this member

Response received Fri 27 Jun 2025 11.01am

File name	Page
Response Body	25
257132188.pdf	27
Telstra Map Legend 4.0b.pdf	29
Telstra Duty of Care v32.0c.pdf	30
AccreditedPlantLocators 2025-01-08a.pdf	32

**Attention:** Image Property

**Site Location:** 32 Watergum Place, Bogangar, NSW 2488

**Your Job Reference:** 32 Watergum Place

**Please do not reply to this email, this is an automated message -**

Thank you for requesting Telstra information via Before You Dig Australia (BYDA).

This response contains Telstra information relating to your recent BYDA request.

**Please refer to all enclosed attachments for more information.**

Information for opening Telstra Asset Plans as well as some other useful contact information is noted in the attached documents.

**Report Damage to Telstra Equipment:** [Report damages to Telstra equipment - Telstra](#)

Please note:

When working in the vicinity of telecommunications plant you have a 'Duty of Care' that must be observed.

Ensure you read all documents (attached) - they contain important information.

Please also refer to the **Before you Dig Australia - BEST PRACTISE GUIDES and The five Ps of safe excavation**

<https://www.byda.com.au/before-you-dig/best-practice-guides/>, The essential steps that must be undertaken prior to commencing construction activities.

**WARNING - MAJOR CABLES and/or OPTIC FIBRE IN THE AREA.**

**Phone 1800 653 935 for further assistance.**

Note: In some areas Telstra fibre routes may be marked as "Amcom", as Telstra has purchased much of this infrastructure. If in doubt, please contact Telstra Plan services on the number above. Telstra plans and information are only valid for 60 days from the date of issue.

**WARNING:**

Telstra plans and location information conform to Quality Level 'D' of the Australian Standard AS 5488 - Classification of Subsurface Utility Information. As such, Telstra supplied location information is indicative only. Spatial accuracy is not applicable to Quality Level D. Refer to AS 5488 for further details. The exact position of Telstra assets can only be validated by physically exposing them. Telstra does not warrant or hold out that its plans are accurate and accepts no responsibility for any inaccuracy. Further on site investigation is required to validate the exact location of Telstra assets prior to commencing work. A Certified Locating Organisation is an essential part of the process to validate the exact location of Telstra assets and to ensure the assets are protected during construction works. See the **Before You Dig Australia - BEST PRACTISE GUIDES and The five Ps of safe excavation** <https://www.byda.com.au/before-you-dig/best-practice-guides/>.

Please note that:

- it is a criminal offence under the *Criminal Code Act 1995* (Cth) to tamper or interfere with telecommunications infrastructure.
- Telstra will take action to recover compensation for damage caused to property and assets, and for interference with the operation of Telstra's networks and customers' services.

Telstra's plans contain Telstra's confidential information and are provided on the basis that they are used solely for identifying the location or vicinity of Telstra's infrastructure to avoid damage to this infrastructure occurring as part of any digging or other excavation activity. You must not use Telstra's plans for any other purpose or in a way that will cause Telstra loss or damage and you must comply with any other terms of access to the data that have been provided to you by Telstra (including Conditions of Use or Access).

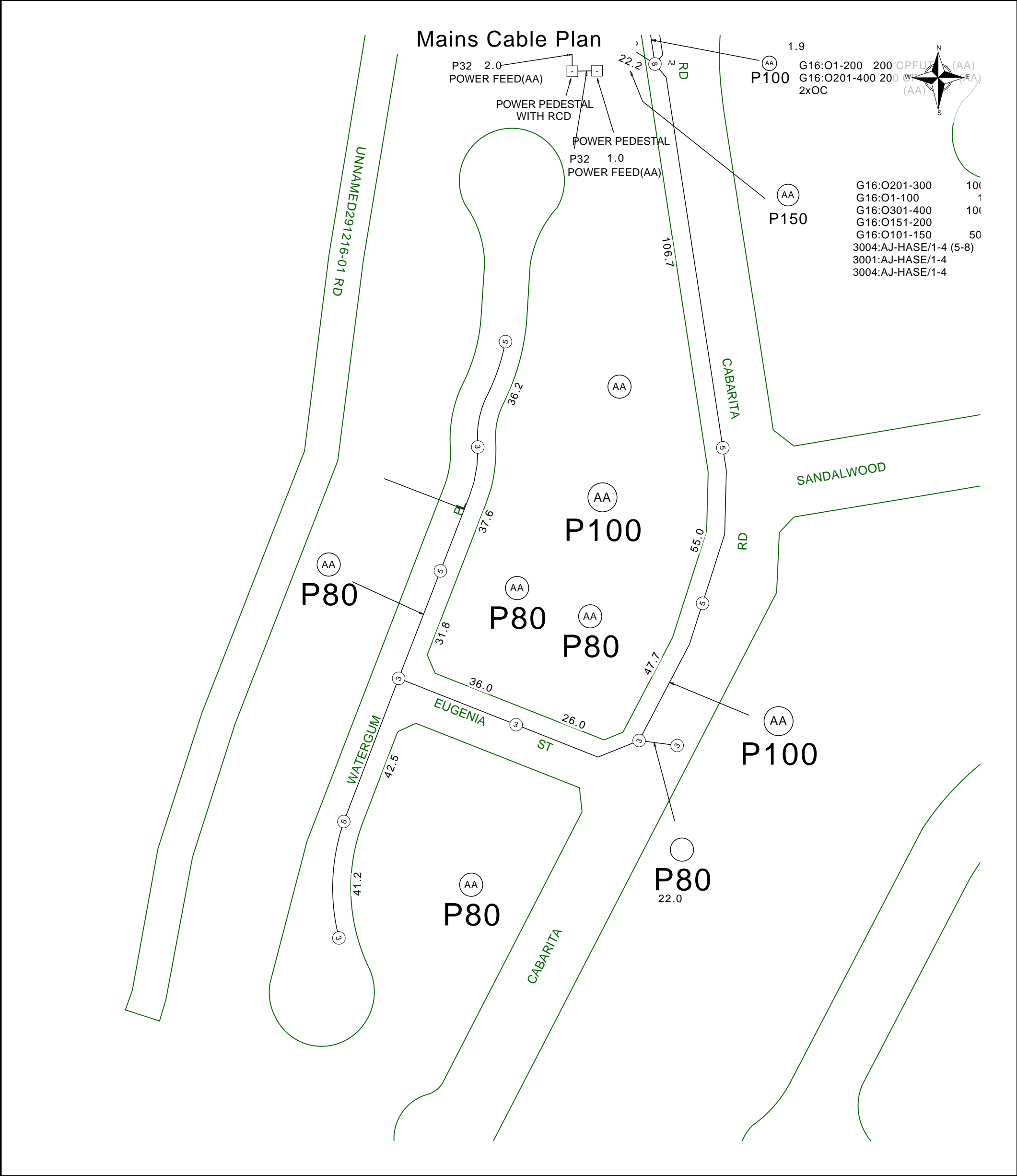
(See attached file: *Telstra Duty of Care v32.0c.pdf*)


(See attached file: *Telstra Map Legend 4.0b.pdf*)

*(See attached file: AccreditedPlantLocators 2025-01-08a.pdf)*

*(See attached file: 257132188.pdf)*





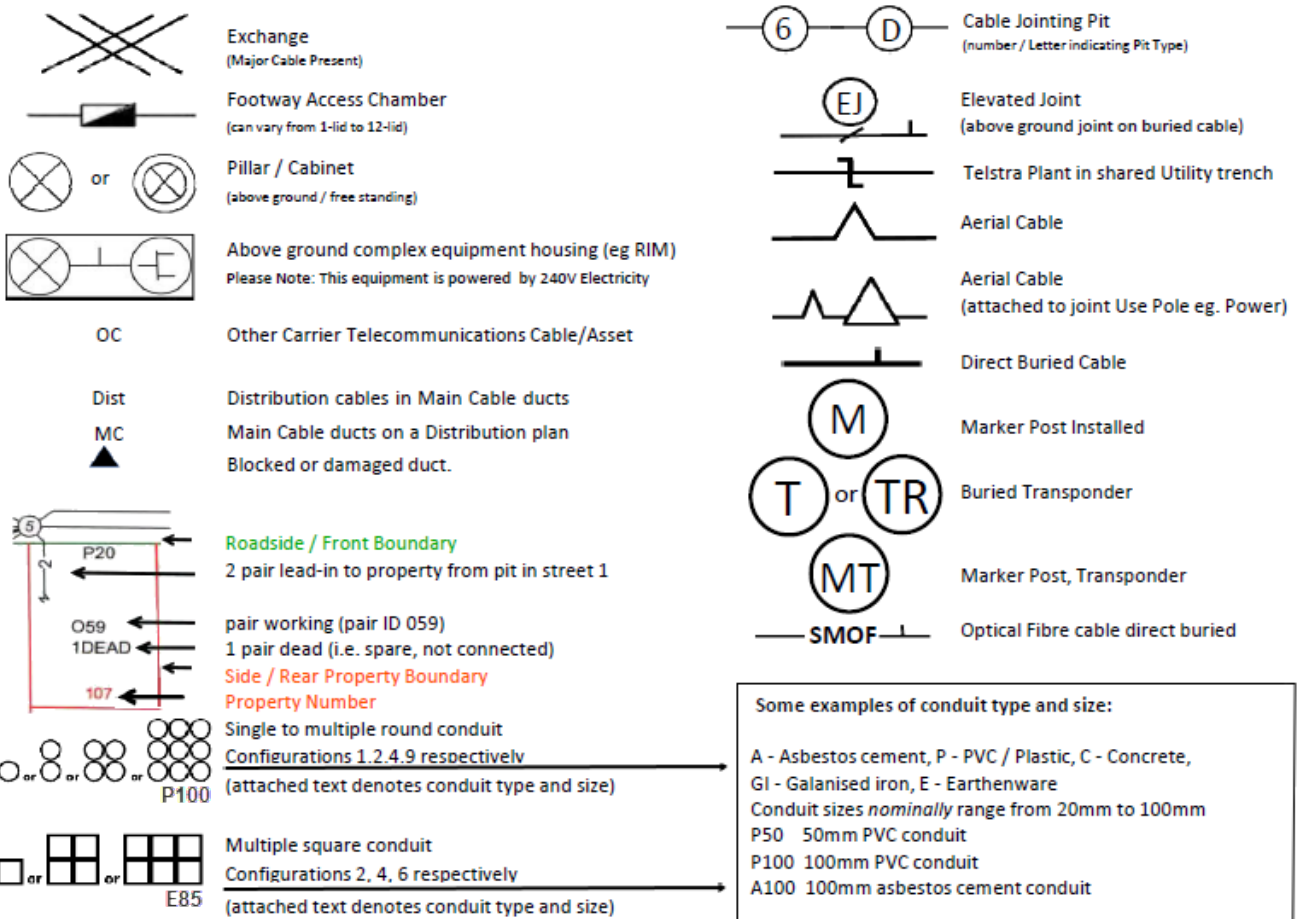
	Report Damage: <a href="https://service.telstra.com.au/customer/general/forms/report-damage-to-telstra">https://service.telstra.com.au/customer/general/forms/report-damage-to-telstra</a> Ph - 13 22 03 Email - <a href="mailto:Telstra.Plans@team.telstra.com">Telstra.Plans@team.telstra.com</a> Planned Services - ph 1800 653 935 (AEST bus hrs only) General Enquiries	Sequence Number: 257132188
TELSTRA LIMITED A.C.N. 086 174 781 Generated On 27/06/2025 10:59:19		<b>CAUTION: Fibre optic and/ or major network present in plot area. Please read the Duty of Care and contact Telstra Plan Services should you require any assistance.</b>

The above plan must be viewed in conjunction with the Mains Cable Plan on the following page

**WARNING**  
Telstra plans and location information conform to Quality Level "D" of the Australian Standard AS 5488-Classification of Subsurface Utility Information. As such, Telstra supplied location information is indicative only. Spatial accuracy is not applicable to Quality Level D. Refer to AS 5488 for further details. The exact position of Telstra assets can only be validated by physically exposing it. Telstra does not warrant or hold out that its plans are accurate and accepts no responsibility for any inaccuracy. Further on site investigation is required to validate the exact location of Telstra plant prior to commencing construction work. A Certified Locating Organisation is an essential part of the process to validate the exact location of Telstra assets and to ensure the asset is protected during construction works.

See the Steps- Telstra Duty of Care that was provided in the email response.

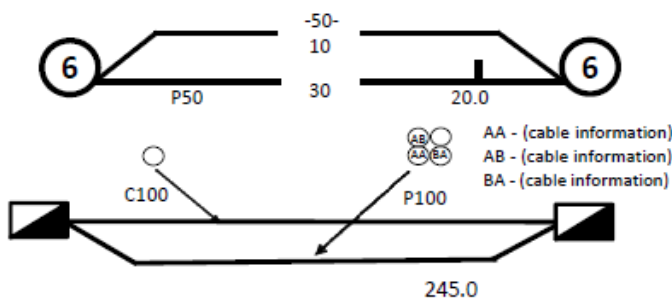
## LEGEND



### Some examples of conduit type and size:

A - Asbestos cement, P - PVC / Plastic, C - Concrete,  
GI - Galvanised iron, E - Earthenware  
Conduit sizes *nominally* range from 20mm to 100mm  
P50 50mm PVC conduit  
P100 100mm PVC conduit  
A100 100mm asbestos cement conduit

### Some Examples of how to read Telstra Plans



One 50mm PVC conduit (P50) containing a 50-pair and a 10-pair cable between two 6-pits, approximately 20.0m apart, with a direct buried 30-pair cable along the same route

Two separate conduit runs between two footway access chambers (manholes) approximately 245m apart A nest of four 100mm PVC conduits (P100) containing assorted cables in three ducts (one being empty) and one empty 100mm concrete duct (C100) along

## Protect our Network:

by maintaining the following distances from our assets:

- 1.0m Mechanical Excavators, Farm Ploughing, Tree Removal
- 500mm Vibrating Plate or Wacker Packer Compactor
- 600mm Heavy Vehicle Traffic (over 3 tonnes) not to be driven across Telstra ducts or plant.
- 1.0m Jackhammers/Pneumatic Breakers
- 2.0m Boring Equipment (in-line, horizontal and vertical)

For more info contact a [CERTLOC Certified Locating Organisation \(CLO\)](#) or  
Telstra Location Intelligence Team 1800 653 935



# Before You Dig Australia

## Think before you dig

This document has been sent to you because you requested plans of the Telstra network through Before You Dig Australia (BYDA).

If you are working or excavating near telecommunications cables, or there is a chance that cables are located near your site, you are responsible to avoid causing damage to the Telstra network.

Please read this document carefully. Taking your time now and following the **BYDA's Best Practices and 5 Ps of Safe Excavation** <https://www.byda.com.au/before-you-dig/best-practice-guides/>

can help you avoid damaging our network, interrupting services, and potentially incurring civil and criminal penalties.

Our network is complex and working near it requires expert knowledge. Do not attempt these activities if you are not qualified to do so.

# Disclaimer and legal details



\*Telstra advises that the accuracy of the information provided by Telstra conforms to Quality Level D as defined in AS5488-2013.

It is a criminal offence under the Criminal Code Act 1995 (Cth) to tamper or interfere with telecommunications infrastructure.

Telstra will also take action to recover costs and damages from persons who damage assets or interfere with the operation of **Telstra's** networks.

By receiving this information including the indicative plans that are provided as part of this information package you confirm that you understand and accept the risks of working near **Telstra's** network and the importance of taking all the necessary steps to confirm the presence, alignments and various depths of **Telstra's** network. This in addition to, and not in replacement of, any duties and obligations you have under applicable law.

When working in the vicinity of a telecommunications plant you have a "Duty of Care" that must be observed. Please read and understand all the information and disclaimers provided below.

The Telstra network is complex and requires expert knowledge to interpret information, to identify and locate components, to pothole underground assets for validation and to safely work around assets without causing damage. If you are not an expert and/or qualified in these areas, then you must not attempt these activities. Telstra will seek compensation for damages caused to its property and losses caused to Telstra and its customers. Construction activities and/or any activities that potentially may impact on Telstra's assets must not commence without first undertaking these steps. Construction activities can include anything that involves breaking ground, potentially affecting Telstra assets.

If you are designing a project, it is recommended that you also undertake these steps to validate underground assets prior to committing to your design.

This Notice has been provided as a guide only and may not provide you with all the information that is required for you to determine what assets are on or near your site of interest. You will also need to collate and understand all information received from other Utilities and understand that some Utilities are not a part of the BYDA program and make your own enquiries as appropriate. It is the responsibility of the entities undertaking the works to protect **Telstra's** network during excavation / construction works.

Telstra owns and retains the copyright in all plans and details provided in conjunction with the applicant's request. The applicant is authorised to use the plans and details only for the purpose indicated in the applicant's request. The applicant must not use the plans or details for any other purpose.

Telstra plans or other details are provided only for the use of the applicant, its servants, agents, or CERTLOC Certified Locating Organisation (CLO). The applicant must not give the plans or details to any parties other than these and must not generate profit from commercialising the plans or details.

Telstra, its servants or agents shall not be liable for any loss or damage caused or occasioned by the use of plans and or details so supplied to the applicant, its servants and agents, and the applicant agrees to indemnify Telstra against any claim or demand for any such loss or damage.

Please ensure Telstra plans and information provided always remains on-site throughout the inspection, location, and construction phase of any works.

Telstra plans are valid for 60 days after issue and must be replaced if required after the 60 days.

## Data Extraction Fees

In some instances, a data extraction fee may be applicable for the supply of Telstra information. Typically, a data extraction fee may apply to large projects, planning and design requests or requests to be supplied in non-standard formats. For further details contact Telstra Location Intelligence Team.

Telstra does not accept any liability or responsibility for the performance of or advice given by a CERTLOC Certified Locating Organisation (CLO). Certification is an initiative taken by Telstra towards the establishment and maintenance of competency standards. However, performance and the advice given will always depend on the nature of the individual engagement.

Neither the Certified Locating Organisation nor any of its employees are an employee or agent for Telstra. Telstra is not liable for any damage or loss caused by the Certified Locating Organisation or its employees.

Once all work is completed, the excavation should be reinstated with the same type of excavated material unless specified by Telstra.

The information contained within this pamphlet must be used in conjunction with other material supplied as part of this request for information to adequately control the risk of potential asset damage.

When using excavators and other machinery, also check the location of overhead power lines.

Workers and equipment must maintain safety exclusion zones around power lines

**WARNING:** Telstra plans and location information conform to Quality Level 'D' of the Australian Standard AS 5488 - Classification of Subsurface Utility Information. As such, Telstra supplied location information is indicative only. Spatial accuracy is not applicable to Quality Level D. Refer to AS 5488 for further details. Telstra does not warrant or hold out that its plans are accurate and accepts no responsibility for any inaccuracy shown on the plans. **FURTHER ON SITE INVESTIGATION IS REQUIRED TO VALIDATE THE EXACT LOCATION OF TELSTRA PLANT PRIOR TO COMMENCING CONSTRUCTION WORK.** A plant location service is an essential part of the process to validate the exact location of Telstra assets and to ensure the assets are protected during construction works. The exact position of Telstra assets can only be validated by physically exposing them. Telstra will seek compensation for damages caused to its property and losses caused to Telstra and its customers.

## Privacy Note

Your information has been provided to Telstra by BYDA to enable Telstra to respond to your BYDA request. Telstra keeps your information in accordance with its privacy statement. You can obtain a copy at [www.telstra.com.au/privacy](http://www.telstra.com.au/privacy) or by calling us at 1800 039 059 (business hours only).

## Before you Dig Australia – BEST PRACTISE GUIDES

### The five Ps of safe excavation

<https://www.byda.com.au/before-you-dig/best-practice-guides/>

## OPENING ELECTRONIC MAP ATTACHMENTS –

Telstra Cable Plans are generated automatically in either PDF or DWF file types.  
Dependent on the site address and the size of area selected.  
You may need to download and install free viewing software from the internet e.g.



DWF Map Files (all sizes over A3)  
Autodesk Viewer (Internet Browser) <https://viewer.autodesk.com/> or  
Autodesk Design Review <http://usa.autodesk.com/design-review/> for  
DWF files. (Windows PC)



PDF Map Files (max size A3)  
Adobe Acrobat Reader <http://get.adobe.com/reader/>



Telstra BYDA map related enquiries email [Telstra.Plans@team.telstra.com](mailto:Telstra.Plans@team.telstra.com)  
1800 653 935 (AEST Business Hours only)



### REPORT ANY DAMAGE TO THE TELSTRA NETWORK IMMEDIATELY

Report online - <https://www.telstra.com.au/forms/report-damage-to-telstra-equipment>

Ph: 13 22 03

If you receive a message asking for a phone or account number say:  
“I don’t have one” then say “Report Damage” then press 1 to speak to an operator.



Telstra New Connections / Disconnections  
13 22 00



Telstra asset relocation enquiries: 1800 810 443 (AEST business hours only).  
[NetworkIntegrity@team.telstra.com](mailto:NetworkIntegrity@team.telstra.com)  
<https://www.telstra.com.au/consumer-advice/digging-construction>



Telstra Aerial Assets Group (overhead network)  
1800 047 909



CERTLOC Certified Locating Organisation (CLO)  
[certloc.com.au/locators/](https://certloc.com.au/locators/)

Only Telstra authorised personnel and CERTLOC Locators can access Telstra’s Pit and Pipe Network.

Referral  
257132187

Member Phone  
(02) 6670 2460

Responses from this member

Response received Fri 27 Jun 2025 10.55am

File name	Page
Response Body	34
257132187.pdf	35

This referral has been successfully processed by Tweed Shire Council and the results are contained in the attached files.

Please DO NOT REPLY TO THIS EMAIL as it has been automatically generated and replies are not monitored.

Sequence No: 257132187  
Date: 27/06/2025  
Enquirer: 3003158  
Contact: Image Property  
Email: sales.support@imageproperty.com.au  
Phone: +61732631811  
Address: 57 Kirby Road, Aspley QLD  
Site Address: 32 Watgum Place, Bogangar NSW  
Activity: Planning and Design  
Job Number: 50525147

We thank you for your enquiry and appreciate your continued use of the Before You Dig Australia Asset Analysis Service.

## **Tweed Shire Council**

**p** (02) 6670 2400 | **f** (02) 6670 2557 | **e** [tsc@tweed.nsw.gov.au](mailto:tsc@tweed.nsw.gov.au) | **w** [www.tweed.nsw.gov.au](http://www.tweed.nsw.gov.au)  
Civic and Cultural Centre Tumbulgun Road Murwillumbah NSW 2484 | PO Box 816 Murwillumbah NSW 2484

Customer Service: (02) 6670 2400 or 1300 292 872 ABN: 90 178 732 496

Our values: transparency | customer focus | fairness | reliability | progressiveness | value for money | collaboration

Please consider the environment before printing this email. One tonne of paper is equivalent to 13 trees and 30 kL of water



## Before You Dig Australia(BYDA) Pipeline Location Information

**Customer Service** | 1300 292 872 | (02) 6670 2400  
PO Box 816 Murwillumbah NSW 2484  
Fax (02) 6670 2429 | ABN 90 178 732 496  
tsc@tweed.nsw.gov.au | www.tweed.nsw.gov.au

**To:**

Image property - Image Property  
57 Kirby Road  
Aspley QLD 4034

**Email:** sales.support@imageproperty.com.au

**Phone:** +61732631811

### Enquiry Details

Utility ID	17550
Sequence Number	257132187
Enquiry Date	27/06/2025 10:54
Response	<b>AFFECTED</b>
Address	32 Watergum Place Bogangar
Location in Road	Road,Nature Strip,Footpath
Activity	Planning and Design

### Enquirer Details

Customer ID	3003158
Contact	Image Property
Company	Image property
Email	sales.support@imageproperty.com.au
Phone	+61732631811

### Enquirer Responsibilities

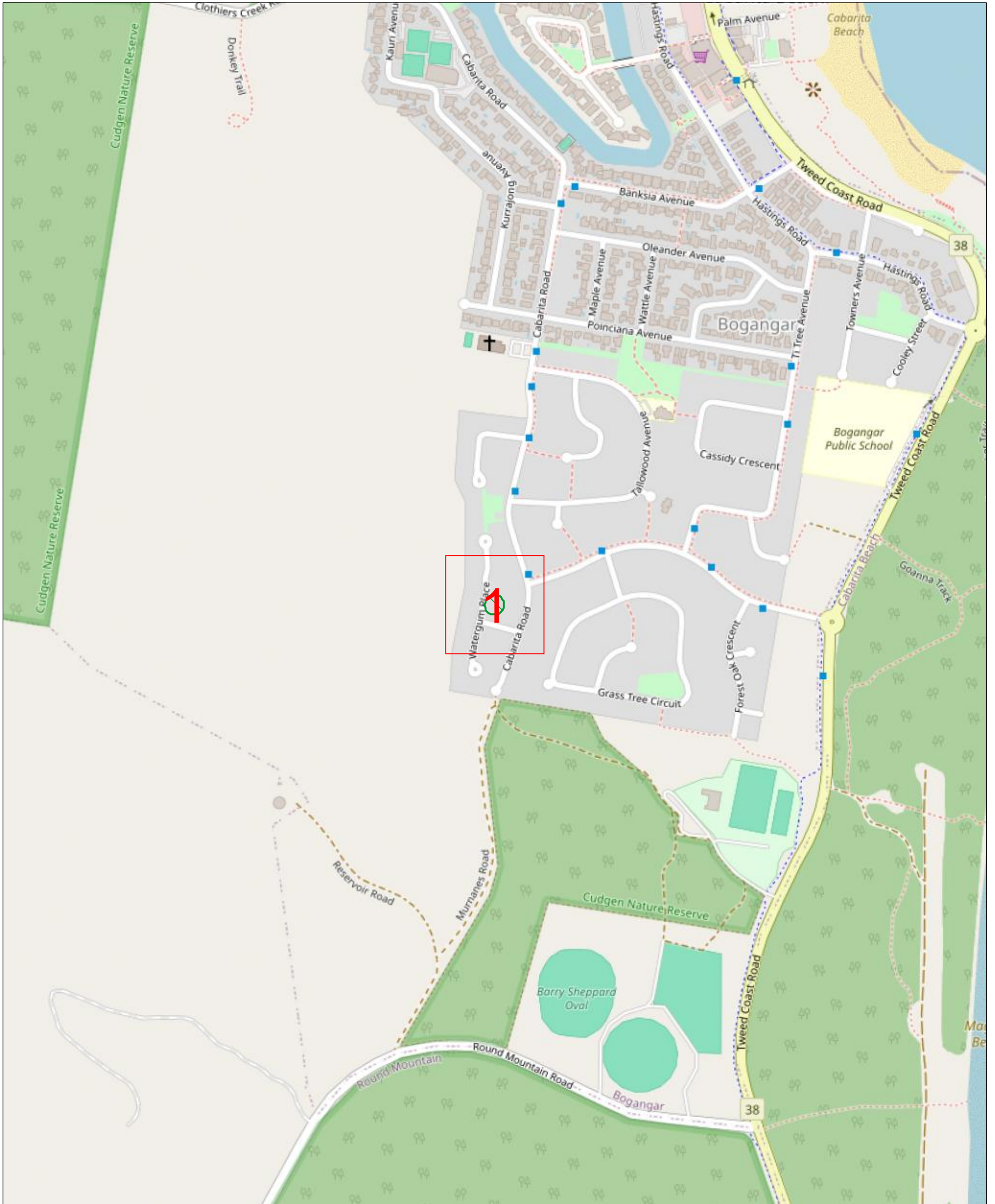
**Asbestos Cement Pipes:** Some of Council's pipe assets are constructed of AC (Asbestos Cement). In most instances our plans will indicate the pipe construction material. For any diggings in the vicinity of these pipes you need to be aware of health implications of disruption to AC pipes. Individual risk assessments need to be conducted when working near these pipes to ensure protection of your staff.

**Internal Drainage:** Map does not cover internal drainage to property, internal water connection, water meter details or sewerage pipe details

**Damage:** Tweed Shire Council reserves all rights to recover compensation for any damage to Sewer mains, Water mains and Stormwater.

**On Site Locations:** Tweed Shire Council provides on site location for BYDA requests only. For onsite sewer mains, water mains and stormwater drain locations please contact Tweed Shire Council on (02) 6670 2460 at least 2 to 3 days prior to commencement.





1:5000 @ A3 Portrait

Legend:  
 BYDA Work Area

Imagery sourced from OpenStreetMaps

While every care is taken to ensure the accuracy of this data, Tweed Shire Council makes no representations or warranties expressed or implied, statutory or otherwise, about its accuracy, reliability, completeness or suitability for any particular purpose and disclaim all responsibility and all liability (including without limitation, liability in negligence) for all expenses, losses, damages (including indirect or consequential damage) and costs which may be incurred as a result of data being inaccurate in any way and for any reason. This information is supplied for general guidance and is to be considered indicative and diagrammatic only. The information contained on this document remains valid for 30 days only from the date of supply. Please note that water pipes and sewer rising mains operate under high pressure and present a significant risk for any work around them while live. These mains will have associated thrust blocks that should also be considered in design/construction clearances.

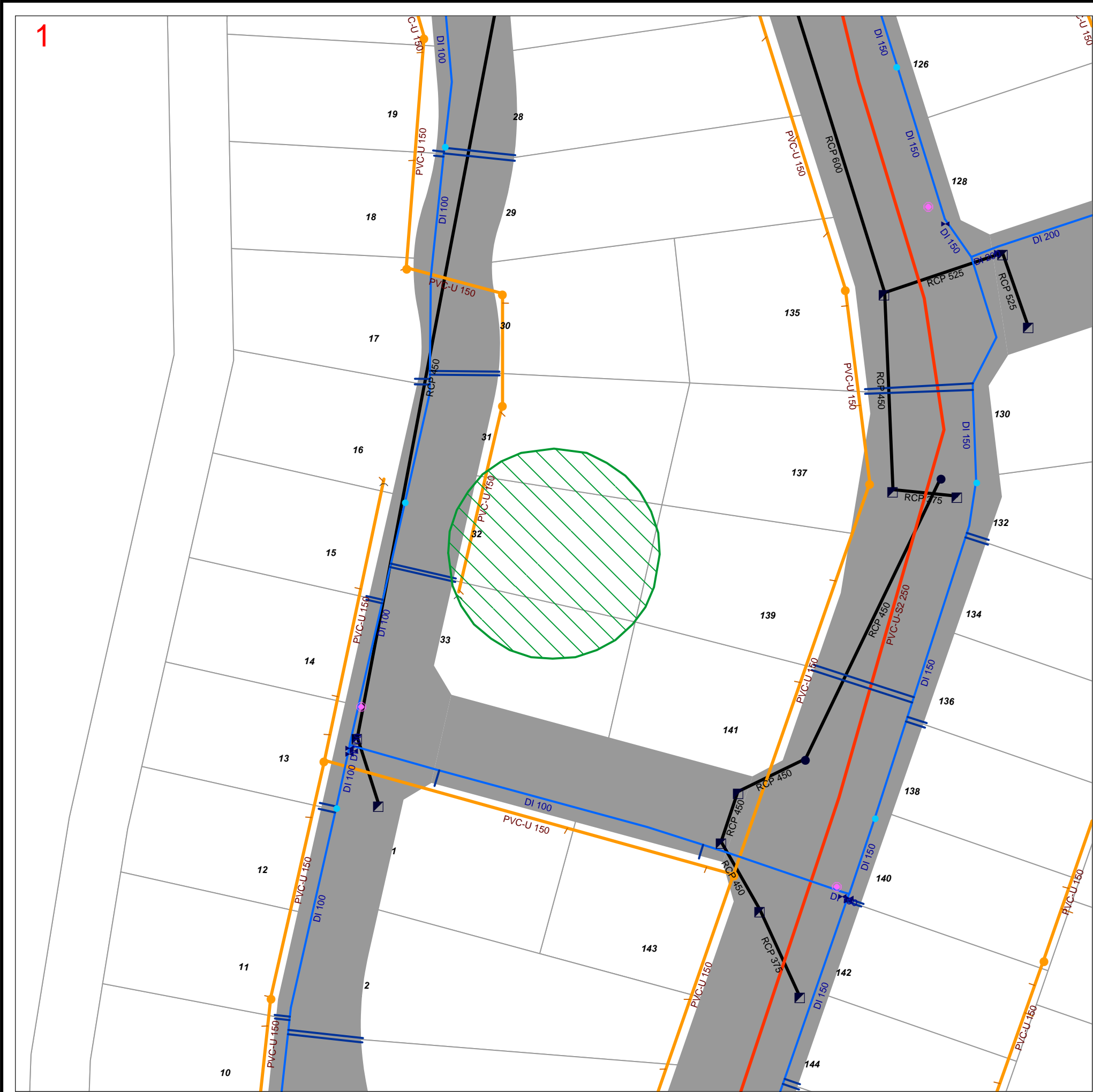


Map 1

Sequence No: 257132187  
32 Watergum Place Bogangar



Date: 27/06/2025



Sewer Pipeline	Sewer Node	Stormwater Pipe (Survey)	Stormwater Node (Survey)	Water Pipe Location	SCIMS Survey Marks
<div></div> Sewer Rising Main	<div></div> End Cap	<div></div> Stormwater Pipe (Survey)	<div></div> Manhole	<div></div> Water Main	<div></div> CP
<div></div> Sewer Rising Main (Abandoned)	<div></div> Public Manhole	<div></div> Stormwater Culvert (Survey)	<div></div> Drop Inlet	<div></div> Water Main (Abandoned)	<div></div> CR
<div></div> Sewer Rising Main (Private)	<div></div> Public Property Pump	<b>Stormwater Pipe</b>	<div></div> Kerb Inlet	<div></div> Water Main (Private)	<div></div> GB
<div></div> Sewer Gravity Main (Abandoned)	<div></div> Public Pump Station	<div></div> Stormwater Pipe	<div></div> Wingwall	<div></div> Water Main (Recycled)	<div></div> MM
<div></div> Sewer Gravity Overflow	<div></div> Vacuum Chamber	<div></div> Stormwater Pipe (Abandoned)	<b>Stormwater Node</b>	<div></div> Water Service Connections	<div></div> PM
<div></div> Sewer Gravity Main (Private)	<div></div> Vent Stack	<div></div> Stormwater Pipe (Private)	<div></div> Manhole	<b>Water Node</b>	<div></div> SS
<div></div> Sewer Service Connection	<b>Communication</b>	<div></div> Stormwater Culvert	<div></div> Drop Inlet	<div></div> Gate Valve	<div></div> TS
<b>Sewer Gravity Mains</b>	<div></div> Communication Node	<div></div> Stormwater Culvert (Abandoned)	<div></div> Kerb Inlet	<div></div> Hydrant	<b>General</b>
<div></div> 0- 200	<div></div> Communication Cables	<div></div> Stormwater Channel	<div></div> Wingwall	<div></div> Pressure Reducing Valve	<div></div> Property Boundary
<div></div> 225 - 600		<div></div> Stormwater Channel (Abandoned)	<div></div> Private Stormwater Point	<div></div> Pressure Sustaining Valve	<div></div> BYDA Work Area
<div></div> 700- 900				<div></div> Pump	<div></div> Flood Levee
				<div></div> Reservoir	
				<div></div> Scour Valve	

1:500 @ A3 Portrait

Date printed: 27/06/2025  
© Land and Property Information (LPI)  
& Tweed Shire Council.  
Boundaries shown should be  
considered approximate only

While every care is taken to ensure the accuracy of this data, Tweed Shire Council makes no representations or warranties expressed or implied, statutory or otherwise, about its accuracy, reliability, completeness or suitability for any particular purpose and disclaim all responsibility and all liability (including without limitation, liability in negligence) for all expenses, losses, damages (including indirect or consequential damage) and costs which may be incurred as a result of data being inaccurate in any way and for any reason. This information is supplied for general guidance and is to be considered indicative and diagrammatic only. The information contained on this document remains valid for 30 days only from the date of supply.  
Please note that water pipes and sewer rising mains operate under high pressure and present a significant risk for any work around them while live. These mains will have associated thrust blocks that should also be considered in design/construction clearances.



## End of document

**i** This document may exclude some files (eg. DWF or ZIP files)

This document was automatically generated at a point-in-time. Be aware that the source information from which this document was created may have changed since it was produced. This document may contain incomplete or out-of-date information. Always check your enquiry details in the BYDA Referral Service for the most recent information. For copyright information refer to individual responses.