

## PROPERTY

28 Ardcarth Street  
Bracken Ridge QLD, 4017

## TYPE OF VISIT

Annual Visit

## SMOKE ALARM STATUS

✔ **Currently Compliant**

## INSPECTION DATE

07/05/2025

## SMOKE ALARMS (INTERCONNECTED) SUMMARY

### ALARM 1 - UPSTAIRS HALLWAY

EXISTING

**POWER:** 3vLi  
**TYPE:** P/E Interconnected  
**MAKE:** DETECTOR INSPECTOR  
**MODEL:** DI10YLI  
**EXPIRY:** 2031  
**DB:** 94  
**REASON:** N/A



### ALARM 2 - BED1

EXISTING

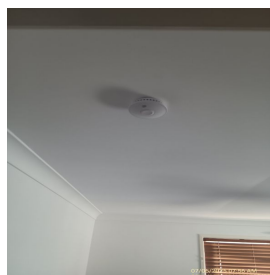
**POWER:** 3vLi  
**TYPE:** P/E Interconnected  
**MAKE:** DETECTOR INSPECTOR  
**MODEL:** DI10YLI  
**EXPIRY:** 2031  
**DB:** 93  
**REASON:** N/A



### ALARM 3 - BED2

EXISTING

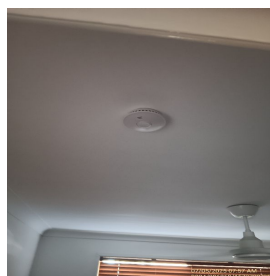
**POWER:** 3vLi  
**TYPE:** P/E Interconnected  
**MAKE:** DETECTOR INSPECTOR  
**MODEL:** DI10YLI  
**EXPIRY:** 2031  
**DB:** 92  
**REASON:** N/A



### ALARM 4 - BED3

EXISTING

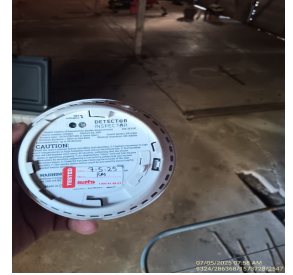
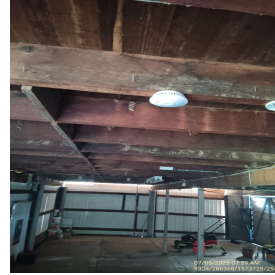
**POWER:** 3vLi  
**TYPE:** P/E Interconnected  
**MAKE:** DETECTOR INSPECTOR  
**MODEL:** DI10YLI  
**EXPIRY:** 2031  
**DB:** 93  
**REASON:** N/A



## ALARM 5 - GARAGE

EXISTING

**POWER:** 3vLi  
**TYPE:** P/E Interconnected  
**MAKE:** DETECTOR INSPECTOR  
**MODEL:** DI10YLI  
**EXPIRY:** 2031  
**DB:** 93  
**REASON:** N/A



All alarms located within this property that are connected to a fire panel or form part of an integrated fire system, as detailed above, have been visually inspected during our attendance and recorded as Low Voltage (LV) alarms. SATS technicians do not test or maintain integrated fire systems or fire panels. Maintenance of these systems should be carried out in accordance with Specification E2.2a of the National Construction Code (NCC) for smoke detection and alarm systems.

Where there are standalone alarms (not connected to or form part of a fire panel/integrated fire system), have been cleaned and tested according to the manufacturer's instructions. These alarms are installed in compliance with Australian Standard AS 3786 (2014) - Smoke Alarms, the Building Code of Australia (BCA), Volume 2, Part 3.7.2 of the National Construction Code, and AS/NZS 3000:2018 Electrical Installations.

\* Not required for compliance



## SAFETY SWITCH TEST SUMMARY

### SWITCH 1 - RHS

EXISTING

**MAKE:** MERLIN GERIN  
**MODEL:** D-RCCB C40  
**RESULT:** PASS



### 1 Safety Switches Present

The safety switch at 28 Ardcar Street, Bracken Ridge has been tested and passed a basic mechanical test at the time of inspection. The test determined that the switch were in working order but no test has been performed to determine the speed at which the device activated. As a result of variables beyond the control of SATS, the results of the test may change in the future. SATS is not responsible for any costs incurred due to failed tests or any costs incurred to replace the failed device.



## CORDED WINDOWS SUMMARY

---

### Room 1 - BED1

EXISTING

NUMBER OF CORDED WINDOWS: 1

---

### Room 2 - BED2

EXISTING

NUMBER OF CORDED WINDOWS: 2

---

### Room 3 - BED3

EXISTING

NUMBER OF CORDED WINDOWS: 1

---

### Room 4 - LOUNGE

EXISTING

NUMBER OF CORDED WINDOWS: 2

---

### Room 5 - KITCHEN

EXISTING

NUMBER OF CORDED WINDOWS: 2

---

All corded window coverings within the property that are required to meet current legislation are compliant, including adherence to the *Trade Practices (Consumer Product Safety Standard - Corded Internal Window Coverings) Regulations 2015* and relevant Australian Standards. All applicable clips and warning tags have been installed to ensure safety compliance.

Please note that corded window coverings installed prior to 1 January 2015 are not required to comply with the 2015 regulations. However, SATS will endeavour to make these coverings as safe as possible, provided that safety measures can be implemented without impeding the normal function of the blind.

Further information is available via the agency portal.

## Smoke Alarm Testing Services Pty Ltd.

1300 41 66 67  
PO Box 6393 Yatala DC QLD 4207  
ABN: 28 132 807 491 e: info@sats.com.au  
Electrical Licenses: (NSW) 264079C | (ACT) 2014969 | (SA) PGE 332279 | (QLD) 92156

