

MANHATTAN

RESIDENCES ♦ APPECROSS

WELCOME HOME TO MANHATTAN, APPECROSS.

*Nestled quietly in the prestigious suburb
of Applecross, Manhattan redefines luxury
living with an exclusive collection of just
five full-floor residences.*

*Designed with intent, each apartment
spans an entire level, offering unparalleled
privacy, breathtaking panoramic views of
the Swan River and a luxurious lifestyle.*





ARTIST IMPRESSION | EXTERIOR



DESIGN

Designed by one of Perth's leading multi-disciplinary architecture studios, Carrier and Postmus Architects (CaPA), this project seamlessly integrates its natural surroundings, emphasising a strong connection to the locations landscape.

The apartments are designed to embrace nearly 360-degree views of the natural landscape, capturing panoramas of the Swan and Canning Rivers, Kings Park, the city skyline, and the Darling Scarp. Thoughtfully planned spatial configurations enhance residents' daily experiences, a leading-edge balcony design amplifies the connection to the river, fostering an immersive indoor-outdoor lifestyle.



ARTIST IMPRESSION | PENTHOUSE ROOFTOP TERRACE

MANHATTAN
RESIDENCES • APPLECROSS

University of
Western Australia

Heathcote Precinct
and Reserve

Kings
Park

South of Perth
Yacht Club

Canning
Bridge IGA

The Raffles
Hotel

Perth
CBD

Canning
Hwy

Kwinana
Fwy

Canning Bridge
Train Station

Ardross St Precinct - 1.7km

Swan River

LOCATION

Located approximately 7 kilometres south of the central business district, highly regarded schools, ban convenience, recreational amenities such and a range of recreational facilities, Applecross as the Applecross Tennis Club, South of Perth offers a high-quality lifestyle. Bounded by the Swan River to the north and Canning Highway to the south, renowned for its lush, green environment, with streets lined by jacaranda trees that bloom vibrantly in late spring.

This picturesque setting is complemented by riverside walks, tranquil parklands, cafes and restaurants just a short wander from your very own luxury retreat.





AMENITIES MAP

DINING

- 1

Ardross Street Precinct
 - 7 Spices Incredible Indian Cuisine
 - Ardross Street Café
 - Cheeky Boy Espresso
 - Cioccolato Espresso
 - Crumbs Patisserie
 - Guce Pizzeria e Cucina Italiana
 - Messy Munchies
 - Nic & Kolo
 - Rhubarb Café
 - Steamlab Coffee & Tea Specialist
- 2

Riseley Street Precinct
 - Bad Apples Bar
 - C15 Espresso
 - Dôme Applecross
 - Grill'd Applecross
 - Health Freak Café
 - Himali Gurkha Nepalese Restaurant
 - Hoodburger
 - il Ciao Applecross
 - OHNAMIYA Japanese Restaurant
 - Paste Thai Restaurant
 - The Old Boy Café
 - Thai Corner

- 3

Bluewater Bistro
- 4

Clancy's Fish Pub
- 5

Delish Pho & BMT
- 6

Hayashi Japanese
- 7

Kinky Lizard on Mews
- 8

Olive and Oscar's
- 9

Raffles Hotel
- 10

The Quarter Acre Hotel

SHOPPING AND RETAIL

- 1

Ardross Street Precinct
 - Applecross Village Meats
 - Australia Post Applecross North
 - Floral Fuzion
 - Harper's Emporium
 - Hyperluxe
 - Lizzy's Boutique Perth
 - lululemon
 - Pharmacy 777 Applecross Village
 - The Good Grocer Applecross IGA
 - The Well Bookshop
 - Vintage Cellars
- 2

Riseley Street Precinct
 - Australia Post Applecross
 - Grand Cru Wineshop & Cellar
 - Marco's Fussy Meats
 - Passion Designer Boutique
 - Scutti Fresh Markets
 - Sinclairs Jewellers
 - Stride With Confidence
- 11

Canning Bridge IGA
- 12

Westfield Booragoon Shopping Centre
- 13

Woolworths Mt Pleasant

HEALTH AND MEDICAL

- 1

Applecross Medical Group
- 4

Jetts
- 1

Lifecare Applecross Physiotherapy
- 5

Perth Integrated Health
- 1

Perth Swing Dance Academy

PARKS, RECREATION AND EDUCATION

- 19

Applecross Jetty Applecross Tennis
- 20

Club Blue Gum Reserve Canning
- 21

Bridge Express Library Deep Water
- 22

Point Reserve Deep Water Point
- 23

Reserve Boat Ramp Gairloch Reserve
- 24

Gentilli Boat Ramp Goolugatup
- 25

Heathcote Heathcote Reserve Jack
- 26

Howson Reserve Jess Joseph Reserve
- 27

Layman Park Mount Henry Bridge
- 28

Reserve Point Dundas Ratcliffe Park
- 29

Saint Benedict's School South of
- 30

Perth Yacht Club Shirley Strickland
- 31

Reserve Tompkins Park Warwick Wild
- 32

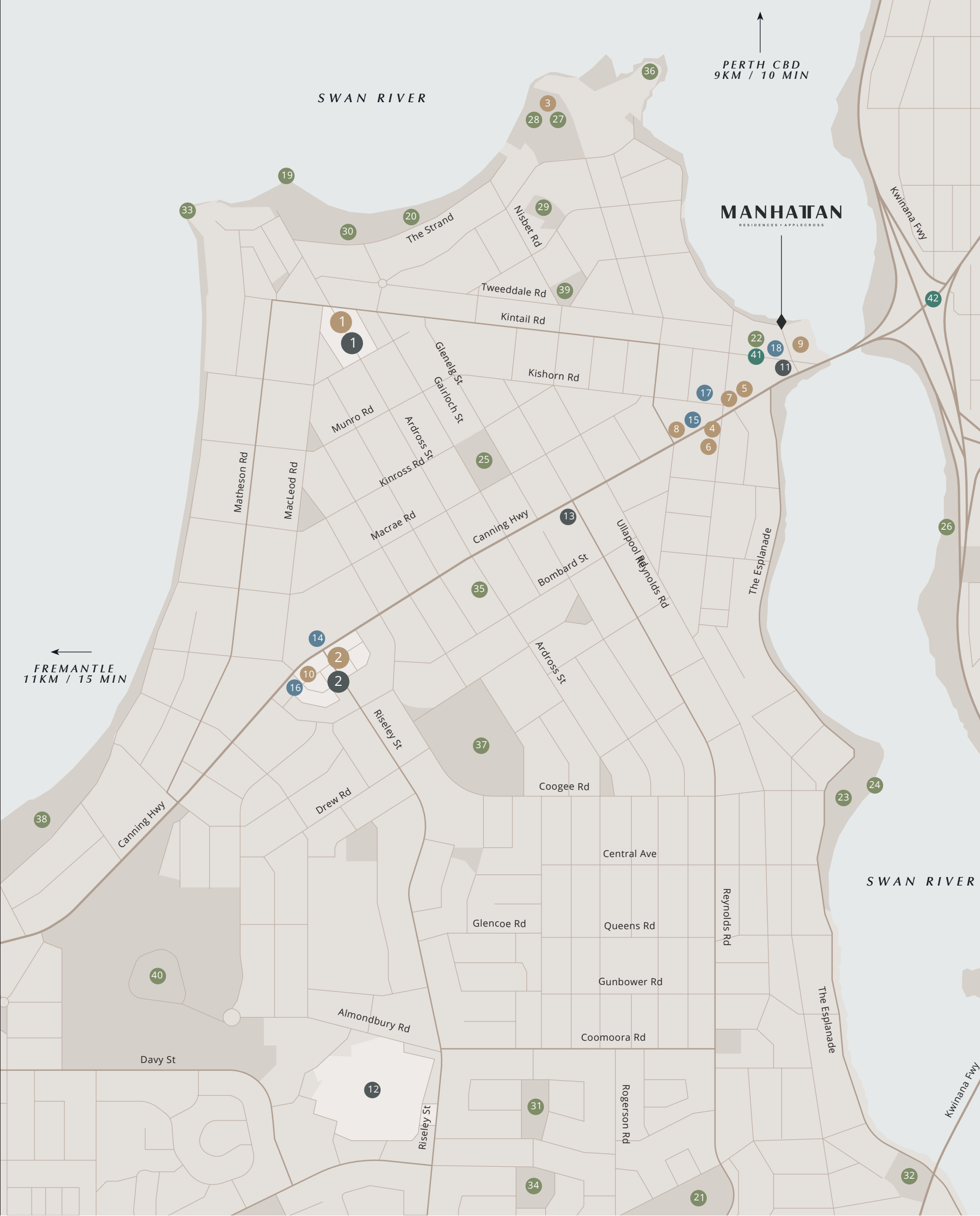
Park Wireless Hill Park

TRANSPORT

- 41

Bus Stop (148, 158, 510)
- 42

Canning Bridge Station





ARTIST IMPRESSION | BAR SOHO PALETTE

Encapsulating the true meaning of exclusive, with just five residences each occupying an entire floor, Manhattan Applecross, offers an extraordinary level of space, privacy, and the convenience of a lock up and leave without compromising on quality. Every detail has been expertly considered, from luxury finishes to premium appliances, open-plan layouts are complemented with expansive balconies to bask in the natural light and uninterrupted Swan River views.

Crowning this architectural masterpiece is the penthouse, a statement of opulence with its own private rooftop terrace, delivering an unrivalled vantage point over the river and



ARTIST IMPRESSION | BALCONY



ARTIST IMPRESSION | KITCHEN SOHO PALETTE

THE CHOICE IS YOURS, TWO BEAUTIFULLY DESIGNED
INTERIOR DESIGNS, SOHO AND TRIBECA, EACH
INSPIRED BY THE TIMELESS ELEGANCE OF MANHATTAN'S
MOST ICONIC NEIGHBOURHOODS.



SoHo, soft and serene, light filled and
exuding luxury, a refined palette of soft
timber tones, natural stone textures, and
brushed gold accents.

SOHO COLOUR PALETTE
ARTIST IMPRESSION | BATHROOM





Tribeca, moody and bold, emanating sophistication, with rich textures, deep timber hues, and striking marble accents.

TRIBECA COLOUR PALETTE
ARTIST IMPRESSION | BATHROOM



ARTIST IMPRESSION | MASTER BEDROOM & ENSUITE SOHO PALETTE







V ZUG APPLIANCES

THOUGHTFULLY CURATED APPLIANCES SIT AT THE HEART OF THE HOME.

Intuitive and intelligent, designed to make entertaining effortless. A company rooted in Switzerland since 1913, committed to building a sustainable future through the manufacturing of long-lasting appliances and responsible, carbon neutral production.

Timeless design. V-ZUG believe that the aesthetic of an object should be as long-lasting as its quality. Anchored in minimalist design, their appliances are understated and elegant.

Allowing the appliances to integrate seamlessly into kitchens, providing a subtle presence with their aesthetics while offering the flexibility of style to work in any interior design setting.

High-quality workmanship and the use of carefully selected materials make for durable products with no compromise in quality and materials. Appliances can be customised according to owner's preferences, for an experience that is beyond personal.





ARTIST IMPRESSION | PRIVATE LOBBY

FLOORPLANS

“Refined and understated, the buildings northern elevation inspired by a ship’s bow and curved form echo the organic flow of the river. Together, with the surrounding environment, Manhattan marks a distinctive gateway to the river precinct.”

- Chris McMahon, CaPA



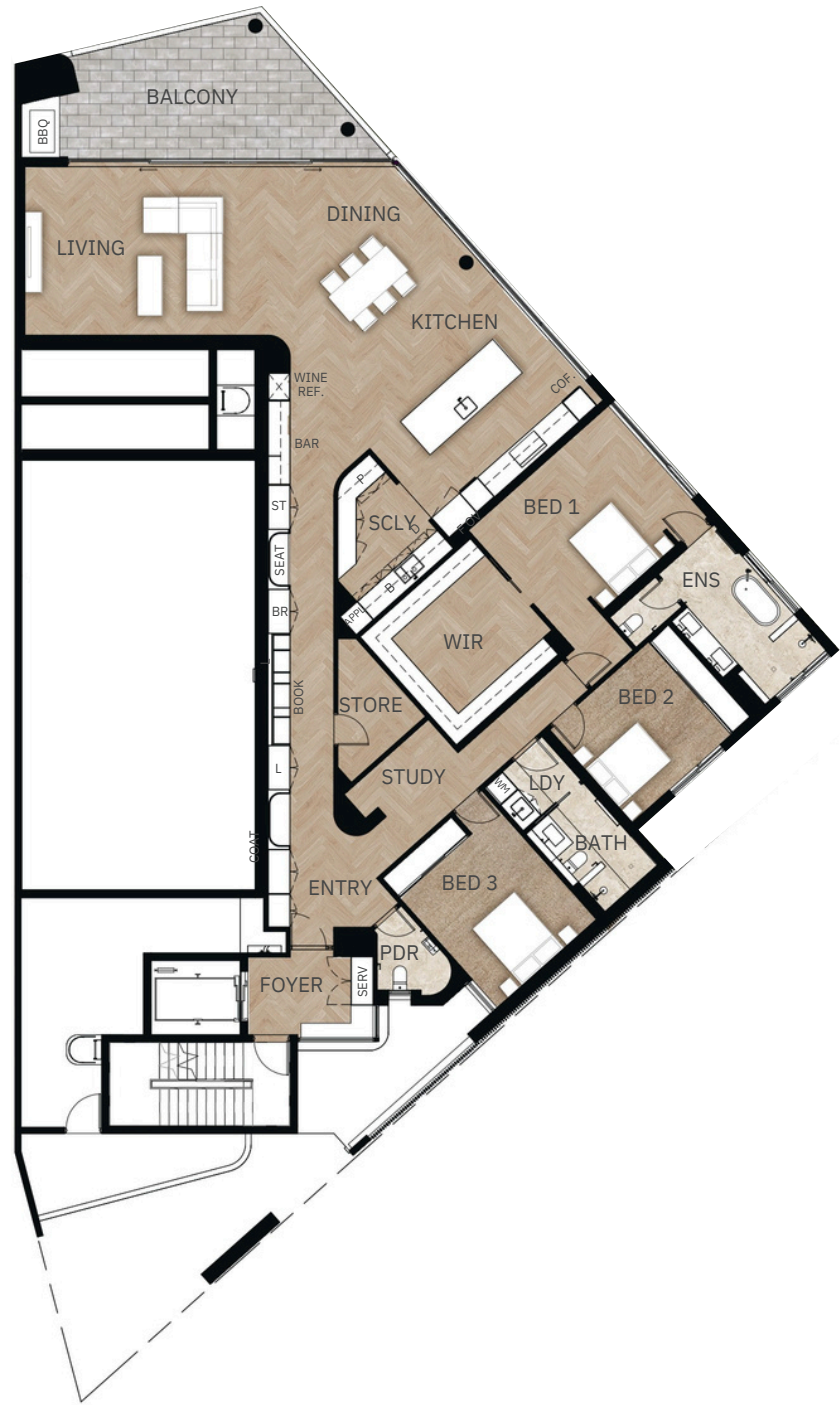
COMMERCIAL



Disclaimer: The areas, dimensions and layouts of the lots in the floorplans, floorplates and diagrams contained in this brochure are approximate only. The area of the lot detailed on the final strata plan is the area that the buyer will own. Whilst the floorplans contained in this brochure have been prepared with care and are believed to be correct at the time of the production, the Seller makes no representation or warranty regarding the accuracy of the floorplans, floorplates and diagrams contained herein. Furniture depicted in the floorplans are intended for graphic or stylistic purposes only. Interested parties should only rely on the plans and specifications contained in the final contract of sale (subject to the Seller's right to vary those plans and specifications in accordance with the Contract).



LEVEL 1



Disclaimer: The areas, dimensions and layouts of the lots in the floorplans, floorplates and diagrams contained in this brochure are approximate only. The area of the lot detailed on the final strata plan is the area that the buyer will own. Whilst the floorplans contained in this brochure have been prepared with care and are believed to be correct at the time of the production, the Seller makes no representation or warranty regarding the accuracy of the floorplans, floorplates and diagrams contained herein. Furniture depicted in the floorplans are intended for graphic or stylistic purposes only. Interested parties should only rely on the plans and specifications contained in the final contract of sale (subject to the Seller's right to vary those plans and specifications in accordance with the Contract).



LEVEL 2



LEVEL 3 & LEVEL 4



Disclaimer: The areas, dimensions and layouts of the lots in the floorplans, floorplates and diagrams contained in this brochure are approximate only. The area of the lot detailed on the final strata plan is the area that the buyer will own. Whilst the floorplans contained in this brochure have been prepared with care and are believed to be correct at the time of the production, the Seller makes no representation or warranty regarding the accuracy of the floorplans, floorplates and diagrams contained herein. Furniture depicted in the floorplans are intended for graphic or stylistic purposes only. Interested parties should only rely on the plans and specifications contained in the final contract of sale (subject to the Seller's right to vary those plans and specifications in accordance with the Contract).



Disclaimer: The areas, dimensions and layouts of the lots in the floorplans, floorplates and diagrams contained in this brochure are approximate only. The area of the lot detailed on the final strata plan is the area that the buyer will own. Whilst the floorplans contained in this brochure have been prepared with care and are believed to be correct at the time of the production, the Seller makes no representation or warranty regarding the accuracy of the floorplans, floorplates and diagrams contained herein. Furniture depicted in the floorplans are intended for graphic or stylistic purposes only. Interested parties should only rely on the plans and specifications contained in the final contract of sale (subject to the Seller's right to vary those plans and specifications in accordance with the Contract).



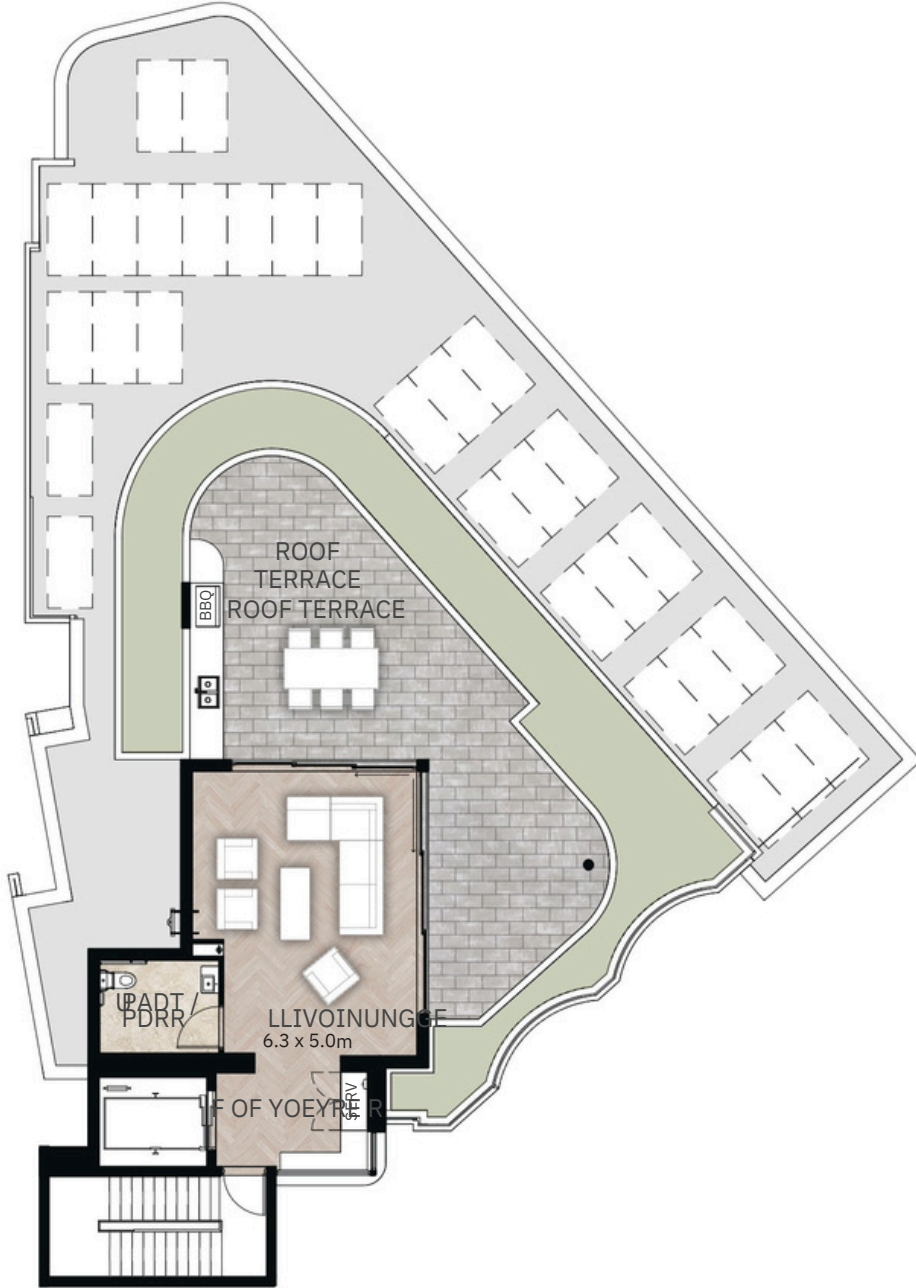
PENTHOUSE



Disclaimer: The areas, dimensions and layouts of the lots in the floorplans, floorplates and diagrams contained in this brochure are approximate only. The area of the lot detailed on the final strata plan is the area that the buyer will own. Whilst the floorplans contained in this brochure have been prepared with care and are believed to be correct at the time of the production, the Seller makes no representation or warranty regarding the accuracy of the floorplans, floorplates and diagrams contained herein. Furniture depicted in the floorplans are intended for graphic or stylistic purposes only. Interested parties should only rely on the plans and specifications contained in the final contract of sale (subject to the Seller's right to vary those plans and specifications in accordance with the Contract).



PENTHOUSE ROOFTOP



Disclaimer: The areas, dimensions and layouts of the lots in the floorplans, floorplates and diagrams contained in this brochure are approximate only. The area of the lot detailed on the final strata plan is the area that the buyer will own. Whilst the floorplans contained in this brochure have been prepared with care and are believed to be correct at the time of the production, the Seller makes no representation or warranty regarding the accuracy of the floorplans, floorplates and diagrams contained herein. Furniture depicted in the floorplans are intended for graphic or stylistic purposes only. Interested parties should only rely on the plans and specifications contained in the final contract of sale (subject to the Seller's right to vary those plans and specifications in accordance with the Contract).



PROJECT CREATORS

GRIFFIN GROUP
 DEVELOPER | [GRIFFIN-GROUP.COM.AU](http://griffin-group.com.au)

Griffin Group is a Western Australian based specialised asset development manager focusing on the residential and commercial property sectors. From project selection, acquisition, through to the build phase and sale of the finished assets, Griffin Group has a track record in delivering high quality projects that are highly sought after in inner city locations throughout Australia.



PROJECT CREATORS

CaPA

CAPA
ARCHITECT | CAPA.STUDIO

Carrier and Postmus Architects (CaPA) are a West Australian based integrated architecture and landscape design studio.

With a highly collaborative approach, CaPA crafts bespoke developments that are designed to endure and make thoughtful connections for future residents.



JABIRU CONSTRUCTION
BUILDER | JABIRUCONSTRUCTION.COM

Jabiru Construction is a Perth-based construction company specialising in medium density and low rise multiple dwelling developments partnered with commercial shed and warehouse construction throughout regional Western Australia.

With over 25 years of building experience, the team at Jabiru Construction is committed to working with our clients to help turn their property development ideas into reality.

MANHATTANAPPLECROSS.COM.AU

Disclaimer: All information and images presented in this brochure are intended for graphic and advertising purposes only. Griffin Group does not make any representations or warranties with respect to the information contained herein, nor the accuracy of any such images, dimensions or specifications. All finishes and specifications regarding the development may be subject to change. All illustrations, diagrams, images, plans or renders are artist impression only. Changes may be made to the development in accordance with the final sales contract. Interested parties should solely rely on the terms and conditions, plans and specifications included in the final sales contract (subject to the Seller’s rights to vary such).

GRIFFIN GROUP PROJECTS



COMPLETED

Lucida, Como WA
Abode, Como WA
Flourish, Camberwell VIC
Loft Haus, Leederville WA
The Residence, Scarborough WA
Reside on Money, Perth WA
Embankment, Martin WA
Parkview, Como WA
One54 Tuart, Tuart Hill WA
Hamilton Hill Medical Centre, WA
Butler Medical Centre, Butler WA
204 Walcott, Menora WA

IN DEVELOPMENT

Aston, Attadale WA
Coastal Edge, North Coogee WA
Coterie, Como WA
Evergreen, Como WA
Nouveau, Nedlands WA
Hastings, Hawthorn East VIC
Paddington, Howard St QLD
Enclave, Coolum QLD
Calibre, Glenelg SA
The Henry, Plympton SA

COMING SOON

Astoria Applecross, WA
Westwood, Nedlands WA
Liberty, Perth WA
Sukha, Scarborough WA
Medika, South Perth WA
NinetySeven, South Perth WA
61 Edgecumbe St, Como WA
Masons, Port Melbourne VIC
49-51 Warleigh Grove, Brighton VIC
11a Musgrave St, Mosman NSW

