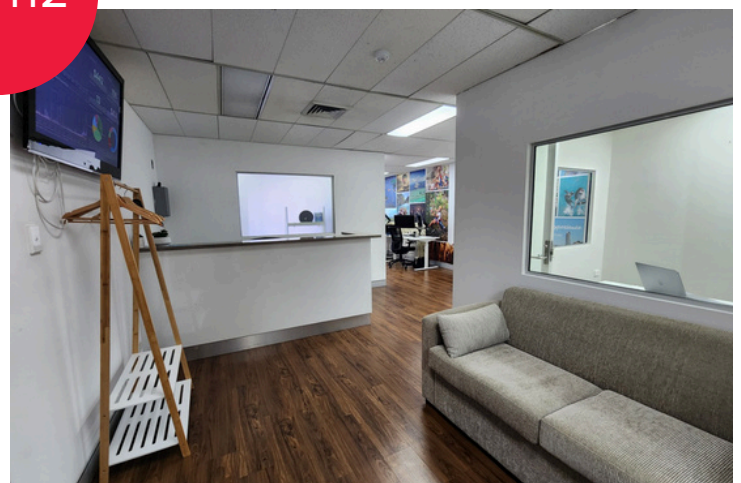
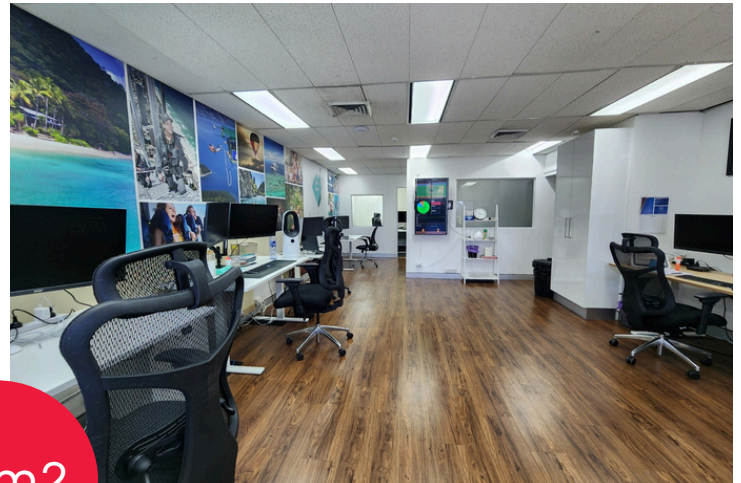


FOR LEASE

Prime Corporate Location
Surfers Paradise



Level 3/46 Cavill Ave
Fully Partitioned Office Suite

\$3,575/Month + GST
including outgoings

- Superb well presented Premises
- Ideal Central Location
- Surrounded by Cafe's, Restaurants & Bars
- Easy Access for Staff & Clients
- Directly Opposite Major Car Park
- Excellent Fit out & Rent for Secure Tenant



Wayne Robbie

☎ 0419 772 867

Simon Robertson

☎ 0449 951 772

✉ simon@pinnaclepropertyagents.com.au

🌐 www.pinnaclepropertyagents.com.au

📍 Shop 10/49-51 Thomas Drive, Chevron Island QLD 4217



PiNNACLE
PROPERTY AGENTS